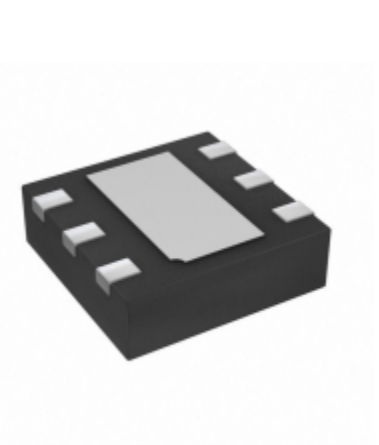


AP7312-1525FM-7	
Part Number	<a href="#">AP7312-1525FM-7</a>
Manufacturer	<a href="#">Diodes Incorporated</a>
Description	IC REG LDO 1.5V/2.5V 0.15A 6DFN
Quantity Available	9000 pcs in stock
Datasheets	<a href="#">AP7312-1525FM-7.pdf</a>
AP7312-1525FM-7 Price	<a href="#">Request Price &amp; Lead Time Online</a> or Email us: <a href="mailto:Info@ariat-tech.com">Info@ariat-tech.com</a>


[GET A QUOTE](#)

Technical Information of AP7312-1525FM-7			
Manufacturer Part Number	<a href="#">AP7312-1525FM-7</a>	Category	<a href="#">Integrated Circuits (ICs)</a>
Manufacturer	<a href="#">Diodes Incorporated</a>	Description	IC REG LDO 1.5V/2.5V 0.15A 6DFN
Package / Case	Tape & Reel (TR)	Quantity Available	9000
Voltage - Output	1.5V, 2.5V	Voltage - Input	2 V ~ 6 V
Voltage - Dropout (Typical)	0.2V @ 150mA, 0.15V @ 200mA	Supplier Device Package	6-DFN2018 (2.0x1.8)
Series	-	Regulator Topology	Positive Fixed
Packaging	Tape & Reel (TR)	Package / Case	6-UFDFN Exposed Pad
Operating Temperature	-40°C ~ 85°C	Number of Regulators	2
Mounting Type	Surface Mount	Current - Output	150mA
Current - Limit (Min)	200mA		

AP7312-1525FM-7 9000pcs New and Original in Stock, Find AP7312-1525FM-7 Stock, Datasheet, PDF, Inventory at Ariat-Tech.com Online, Order AP7312-1525FM-7 Diodes Incorporated with warrantied and confidence. RFQ AP7312-1525FM-7 : [Info@Ariat-Tech.com](mailto:Info@Ariat-Tech.com)

Related parts for AP7312-1525FM-7				
Image	Part Number	Description	Manufacturer	Quantity
	<a href="#">AP7312-1833FM-7</a>	IC REG LDO 1.8V/3.3V 0.15A 6DFN	Diodes Incorporated	6000 pcs
	<a href="#">AP7312-1533FM-7</a>	IC REG LDO 1.5V/3.3V 0.15A 6DFN	Diodes Incorporated	2826 pcs
	<a href="#">AP7311-ADJWG-7</a>	AP7311-ADJWG-7 QQ2850920316	QQ2850920316	15035 pcs
	<a href="#">AP7312-1525W6-7</a>	IC REG LDO 1.5V/2.5V 0.15A SOT26	Diodes Incorporated	9000 pcs
	<a href="#">AP7312-1828W6G-7</a>	AP7312-1828W6G-7 DIODES	DIODES	6000 pcs
	<a href="#">AP7312-1830W6-7</a>	IC REG LDO 1.8V/3V 0.15A SOT26	Diodes Incorporated	2560 pcs
	<a href="#">AP7312-1830FM-7</a>	IC REG LDO 1.8V/3V 0.15A 6DFN	Diodes Incorporated	12000 pcs
	<a href="#">AP7312-1233FM-7</a>	IC REG LDO 1.2V/3.3V 0.15A 6DFN	Diodes Incorporated	500 pcs
	<a href="#">AP7312-1833W6-7</a>	IC REG LDO 1.8V/3.3V 0.15A SOT26	Diodes Incorporated	3000 pcs
	<a href="#">AP7312-1218FM-7</a>	IC REG LDO 1.2V/1.8V 0.15A 6DFN	Diodes Incorporated	500 pcs
	<a href="#">AP7312-1233W6-7</a>	IC REG LDO 1.2V/3.3V 0.15A SOT26	Diodes Incorporated	500 pcs
	<a href="#">AP7311-WG-7-89</a>	AP7311-WG-7-89 DIODES	DIODES	6000 pcs
	<a href="#">AP7311-SNG-7</a>	IC REG LINEAR POS ADJ 150MA	Diodes Incorporated	500 pcs
	<a href="#">AP7312-1828W6-7</a>	IC REG LDO 1.8V/2.8V 0.15A SOT26	Diodes Incorporated	500 pcs
	<a href="#">AP7311WG</a>	AP7311WG DIODES	DIODES	9000 pcs
	<a href="#">AP7312-1533W6-7</a>	IC REG LDO 1.5V/3.3V 0.15A SOT26	Diodes Incorporated	6000 pcs
	<a href="#">AP7312-1218W6-7</a>	IC REG LDO 1.2V/1.8V 0.15A SOT26	Diodes Incorporated	9000 pcs
	<a href="#">AP7312-1828FM-7</a>	IC REG LDO 1.8V/2.8V 0.15A 6DFN	Diodes Incorporated	15000 pcs
	<a href="#">AP7312-1233W6G-7</a>	AP7312-1233W6G-7 DIODES	DIODES	4980 pcs
	<a href="#">AP7311-WG-7</a>	IC REG LDO ADJ 0.15A SOT25	Diodes Incorporated	2894 pcs

<a href="#">AP7312-1525FM-7 Stock</a>	<a href="#">AP7312-1525FM-7 Price</a>	<a href="#">AP7312-1525FM-7 Electronics</a>	<a href="#">AP7312-1525FM-7 Components</a>
<a href="#">AP7312-1525FM-7 Inventory</a>	<a href="#">AP7312-1525FM-7 Digikey</a>	<a href="#">Supplier AP7312-1525FM-7</a>	<a href="#">Order AP7312-1525FM-7 Online</a>
<a href="#">Inquiry AP7312-1525FM-7</a>	<a href="#">AP7312-1525FM-7 Image</a>	<a href="#">AP7312-1525FM-7 Picture</a>	<a href="#">AP7312-1525FM-7 PDF</a>
<a href="#">AP7312-1525FM-7 Datasheet</a>	<a href="#">Download AP7312-1525FM-7 Datasheet</a>	<a href="#">Manufacturer Diodes Incorporated</a>	