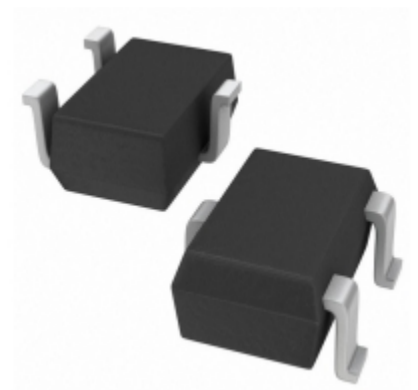


<b>SI1307EDL-T1-E3</b>	
Part Number	<a href="#">SI1307EDL-T1-E3</a>
Manufacturer	<a href="#">Vishay / Siliconix</a>
Description	MOSFET P-CH 12V 0.85A SOT323-3
Quantity Available	17009 pcs in stock
Datasheets	<a href="#">SI1307EDL-T1-E3.pdf</a>
SI1307EDL-T1-E3 Price	<a href="#">Request Price &amp; Lead Time Online</a> or Email us: <a href="mailto:Info@ariat-tech.com">Info@ariat-tech.com</a>


[GET A QUOTE](#)

Technical Information of SI1307EDL-T1-E3			
Manufacturer Part Number	<a href="#">SI1307EDL-T1-E3</a>	Category	<a href="#">Discrete Semiconductor</a>
Manufacturer	<a href="#">Vishay / Siliconix</a>	Description	MOSFET P-CH 12V 0.85A SOT323-3
Package / Case	Tape & Reel (TR)	Quantity Available	17009
Series	-	Technology	MOSFET (Metal Oxide)
Operating Temperature	-55°C ~ 150°C (TJ)	Mounting Type	Surface Mount
Package / Case	SC-70, SOT-323	Supplier Device Package	SC-70-3
Power Dissipation (Max)	290mW (Ta)	FET Type	P-Channel
FET Feature	-	Drain to Source Voltage (Vdss)	12V
Current - Continuous Drain (Id) @ 25°C	850mA (Ta)	Rds On (Max) @ Id, Vgs	290 mOhm @ 1A, 4.5V
Vgs(th) (Max) @ Id	450mV @ 250µA (Min)	Gate Charge (Qg) (Max) @ Vgs	5nC @ 4.5V
Input Capacitance (Ciss) (Max) @ Vds	-	Packaging	Tape & Reel (TR)

SI1307EDL-T1-E3 17009pcs New and Original in Stock, Find SI1307EDL-T1-E3 Stock, Datasheet, PDF, Inventory at Ariat-Tech.com Online, Order SI1307EDL-T1-E3 Vishay / Siliconix with warrantied and confidence. RFQ SI1307EDL-T1-E3 : [Info@Ariat-Tech.com](mailto:Info@Ariat-Tech.com)

Related parts for SI1307EDL-T1-E3				
Image	Part Number	Description	Manufacturer	Qty
	<a href="#">SI13132CNU</a>	SI13132CNU SILICON	SILICON	840 pcs
	<a href="#">SI1307EDL-T1-GE3</a>	MOSFET P-CH 12V 0.85A SC-70-3	Electro-Films (EFI) / Vishay	17585 pcs
	<a href="#">SI1308EDL-T1-GE3</a>	MOSFET N-CH 30V 1.4A SOT323	Vishay / Siliconix	36031 pcs
	<a href="#">SI1307EDL</a>	SI1307EDL VISHAY	Vishay	2888 pcs
	<a href="#">SI1315DL-T1-GE3</a>	MOSFET P-CH 8V 0.9A SC70-3	Vishay / Siliconix	18974 pcs
	<a href="#">SI1308EDL</a>	SI1308EDL VB	VB	18974 pcs
	<a href="#">SI1307DL-T1-E3</a>	MOSFET P-CH 12V 0.85A SOT323-3	Electro-Films (EFI) / Vishay	5642 pcs
	<a href="#">SI1307DL-T1-E3</a>	MOSFET P-CH 12V 0.85A SOT323-3	Vishay / Siliconix	5642 pcs
	<a href="#">SI1307DL-T1-GE3</a>	MOSFET P-CH 12V 0.85A SOT323-3	Electro-Films (EFI) / Vishay	17585 pcs
	<a href="#">SI1307</a>	SI1307 VISHAY	Vishay	490 pcs
	<a href="#">SI1307EDL-T1-E3</a>	MOSFET P-CH 12V 0.85A SOT323-3	Electro-Films (EFI) / Vishay	17009 pcs
	<a href="#">SI1315DL-T1-E3</a>	SI1315DL-T1-E3 Son	Son	200 pcs
	<a href="#">SI1307DL-T1</a>	SI1307DL-T1 VISHAY	Vishay	56260 pcs
	<a href="#">SI1308EDL-T1-E3</a>	SI1308EDL-T1-E3 Son	Son	200 pcs
	<a href="#">SI1307-DL-T1-E3</a>	SI1307-DL-T1-E3 VISHAY	Vishay	26111 pcs
	<a href="#">SI1307DL-T1-GE3</a>	MOSFET P-CH 12V 0.85A SOT323-3	Vishay / Siliconix	17585 pcs
	<a href="#">SI1307DL</a>	SI1307DL VISHAY	Vishay	30000 pcs
	<a href="#">SI1307EDL-T1-GE3</a>	MOSFET P-CH 12V 0.85A SC-70-3	Vishay / Siliconix	17585 pcs
	<a href="#">SI1308EDL-T1-GE3</a>	MOSFET N-CH 30V 1.4A SOT323	Electro-Films (EFI) / Vishay	36031 pcs
	<a href="#">SI1306DL</a>	SI1306DL VISHAY	Vishay	30000 pcs

**IC Chips & IGBT Module - Hot Stock Part Number**

<a href="#">SI1304DL-T1</a>	<a href="#">SI1304DL-T1-E3</a>	<a href="#">SI1304DL-T1-GE3</a>	<a href="#">SI1305DL</a>	<a href="#">SI1305DL-T1</a>
<a href="#">SI1305DL-T1-E3</a>	<a href="#">SI1305DL-T1-E3</a>	<a href="#">SI1305DL-T1-GE3</a>	<a href="#">SI1305DL-T1-GE3</a>	<a href="#">SI1305DL-T1-GE3</a>
<a href="#">SI1305EDL</a>	<a href="#">SI1305EDL-T1-E3</a>	<a href="#">SI1305EDL-T1-E3</a>	<a href="#">SI1305EDL-T1-GE3</a>	<a href="#">SI1305EDL-T1-GE3</a>
<a href="#">SI1305LT-T1-E3</a>	<a href="#">SI1306DL</a>	<a href="#">SI1307-DL-T1-E3</a>	<a href="#">SI1307DL</a>	<a href="#">SI1307DL-T1</a>
<a href="#">SI1307DL-T1-E3</a>	<a href="#">SI1307DL-T1-E3</a>	<a href="#">SI1307DL-T1-GE3</a>	<a href="#">SI1307DL-T1-GE3</a>	<a href="#">SI1307EDL</a>
<a href="#">SI1307EDL-T1-E3</a>	<a href="#">SI1307EDL-T1-GE3</a>	<a href="#">SI1307EDL-T1-GE3</a>	<a href="#">SI1308EDL</a>	<a href="#">SI1308EDL-T1-GE3</a>
<a href="#">SI1308EDL-T1-GE3</a>	<a href="#">SI13132CNU</a>	<a href="#">SI1315DL-T1-GE3</a>	<a href="#">SI1315DL-T1-GE3</a>	<a href="#">SI1317DL-T1-GE3</a>
<a href="#">SI1317DL-T1-GE3</a>	<a href="#">SI1330EDL-T1-E3</a>	<a href="#">SI1330EDL-T1-E3</a>	<a href="#">SI1330EDL-T1-GE3</a>	<a href="#">SI1330EDL-T1-GE3</a>
<a href="#">SI1400DL-T1</a>	<a href="#">SI1400DL-T1-E3</a>	<a href="#">SI1400DL-T1-E3</a>	<a href="#">SI1400DL-T1-GE3</a>	<a href="#">SI1400DL-T1-GE3</a>
<a href="#">SI1401EDH-T1-GE3</a>	<a href="#">SI1401EDH-T1-GE3</a>	<a href="#">SI1402DH-T1-GE3</a>	<a href="#">SI1402DH-T1-GE3</a>	<a href="#">SI1403BDL-T1-E3</a>