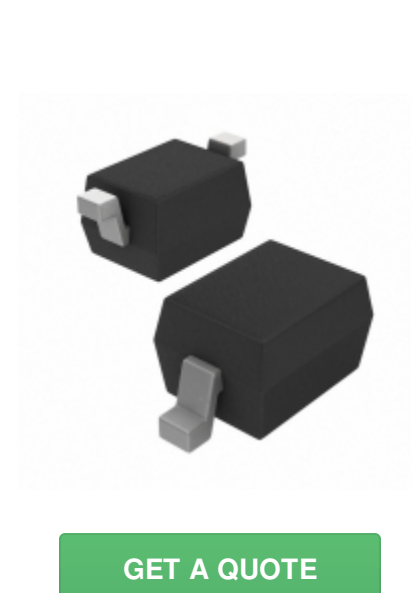


ZLLS410TA	
Part Number	<a href="#">ZLLS410TA</a>
Manufacturer	<a href="#">Diodes Incorporated</a>
Description	DIODE SCHOTTKY 10V 570MA SOD323
Quantity Available	99367 pcs in stock
Datasheets	
ZLLS410TA Price	<a href="#">Request Price &amp; Lead Time Online</a> or Email us: <a href="mailto:Info@ariat-tech.com">Info@ariat-tech.com</a>


[GET A QUOTE](#)

Technical Information of ZLLS410TA			
Manufacturer Part Number	<a href="#">ZLLS410TA</a>	Category	<a href="#">Discrete Semiconductor</a>
Manufacturer	<a href="#">Diodes Incorporated</a>	Description	DIODE SCHOTTKY 10V 570MA SOD323
Package / Case	Tape & Reel (TR)	Quantity Available	99367
Series	-	Mounting Type	Surface Mount
Package / Case	SC-76, SOD-323	Supplier Device Package	SOD-323
Diode Type	Schottky	Current - Average Rectified (Io)	570mA (DC)
Voltage - Forward (Vf) (Max) @ If	380mV @ 100mA	Current - Reverse Leakage @ Vr	6µA @ 10V
Voltage - DC Reverse (Vr) (Max)	10V	Speed	Fast Recovery = 200mA (Io)
Reverse Recovery Time (trr)	3ns	Operating Temperature - Junction	-
Capacitance @ Vr, F	26pF @ 10V, 1MHz	Packaging	Tape & Reel (TR)

ZLLS410TA 99367pcs New and Original in Stock, Find ZLLS410TA Stock, Datasheet, PDF, Inventory at Ariat-Tech.com Online, Order ZLLS410TA Diodes Incorporated with warrantied and confidence. RFQ ZLLS410TA : [Info@Ariat-Tech.com](mailto:Info@Ariat-Tech.com)

Related parts for ZLLS410TA				
Image	Part Number	Description	Manufacturer	Qty
	<a href="#">ZLLS1000TA</a>	DIODE SCHOTTKY 40V 1.16A SOT23-3	Diodes Incorporated	12238 pcs
	<a href="#">ZLLS400QTA</a>	DIODE SCHOTTKY 40V 520MA SOD323	Diodes Incorporated	500 pcs
	<a href="#">SBRD8360RLG-VF01</a>	DIODE SCHOTTKY 60V 3A DPAK	AMI Semiconductor / ON Semiconductor	500 pcs
	<a href="#">ZLLS400-7</a>	ZLLS400-7 DIODES	Digital View Inc.	22521 pcs
	<a href="#">ZLLS350TA</a>	DIODE SCHOTTKY 40V 380MA SOD523	Diodes Incorporated	30000 pcs
	<a href="#">TST10H200CW C0G</a>	DIODE SCHOTTKY 200V 5A TO220AB	TSC (Taiwan Semiconductor)	500 pcs
	<a href="#">ZLLS500QTA</a>	DIODE SCHOTTKY 40V 700MA SOT23	Diodes Incorporated	500 pcs
	<a href="#">ZLLS2000TC</a>	DIODE SCHOTTKY 40V 2.2A SOT23-6	Diodes Incorporated	500 pcs
	<a href="#">SUF15J-E3/54</a>	DIODE GEN PURP 600V 1.5A GP20	Electro-Films (EFI) / Vishay	500 pcs
	<a href="#">ZLLS500TA</a>	DIODE SCHOTTKY 40V 700MA SOT23-3	Diodes Incorporated	181500 pcs
	<a href="#">SF2002G C0G</a>	DIODE GEN PURP 100V 20A TO220AB	TSC (Taiwan Semiconductor)	500 pcs
	<a href="#">ZLLS400TC</a>	DIODE SCHOTTKY 40V 520MA SOD323	Diodes Incorporated	500 pcs
	<a href="#">ZLLS2000TA</a>	DIODE SCHOTTKY 40V 2.2A SOT23-6	Diodes Incorporated	19700 pcs
	<a href="#">ZLLS410-7</a>	ZLLS410-7 DIODES	Digital View Inc.	22545 pcs
	<a href="#">ZLLS1000TC</a>	DIODE SCHOTTKY 40V 1.16A SOT23-3	Diodes Incorporated	500 pcs
	<a href="#">ZLLS400QTC</a>	DIODE SCHOTTKY 40V SOD323	Diodes Incorporated	500 pcs
	<a href="#">ZLLS400TA</a>	DIODE SCHOTTKY 40V 520MA SOD323	Diodes Incorporated	100000 pcs
	<a href="#">1N3274</a>	STANDARD RECTIFIER	Microsemi	500 pcs
	<a href="#">ZLLS500TC</a>	DIODE SCHOTTKY 40V 700MA SOT23-3	Diodes Incorporated	500 pcs
	<a href="#">RS1KL MHG</a>	DIODE GEN PURP 800V 800MA SUBSMA	TSC (Taiwan Semiconductor)	500 pcs

**IC Chips & IGBT Module - Hot Stock Part Number**

<a href="#">04026C271KAT2A</a>	<a href="#">0402YA120GAJ2A</a>	<a href="#">1812GC472JAT1A</a>	<a href="#">A518S800TAC</a>	<a href="#">ADXL195WBRDZA-RL</a>
<a href="#">AT24HC02B-TH-B</a>	<a href="#">BZX84-B16/C</a>	<a href="#">C3225X7R2A105K200AE</a>	<a href="#">CAT803TTBI-GT3</a>	<a href="#">CKP25201R0M-T</a>
<a href="#">CL03A474MQ3NUNC</a>	<a href="#">CM757J-24F</a>	<a href="#">D901S45T</a>	<a href="#">DIM400NSM33-F</a>	<a href="#">EZ1083CT</a>
<a href="#">FDS6576_NL</a>	<a href="#">FMP05-R60</a>	<a href="#">GQM1875C2E300GB12D</a>	<a href="#">HCNW4502#500</a>	<a href="#">IPD60R385CP</a>
<a href="#">IRFRIC20TRL</a>	<a href="#">LMS24681T1G</a>	<a href="#">LT1782IS5#PBF</a>	<a href="#">LTC3801BES6#TR</a>	<a href="#">LTC4058EDD-4.2</a>
<a href="#">LX1970IDU-TR</a>	<a href="#">MDD142-08N1</a>	<a href="#">MDD310-02N1</a>	<a href="#">MIC5209-2.5YS</a>	<a href="#">MLF2012DR82KT000</a>
<a href="#">MT8870DS-EL</a>	<a href="#">PCF50872E/271E1</a>	<a href="#">PN2222AG-T92-B</a>	<a href="#">RF7244TR7</a>	<a href="#">SG16AA160</a>
<a href="#">SIM-013STW1V</a>	<a href="#">SIR870DP-T1-GE3</a>	<a href="#">SUP70N04-10</a>	<a href="#">UA7812CKCS</a>	<a href="#">URAM2H22</a>
<a href="#">W163-15G</a>	<a href="#">WO503RD240</a>	<a href="#">ZLLS1000TA</a>	<a href="#">ZLLS2000TA</a>	<a href="#">ZLLS350TA</a>
<a href="#">ZLLS400-7</a>	<a href="#">ZLLS400TA</a>	<a href="#">ZLLS410-7</a>	<a href="#">ZLLS500TA</a>	<a href="#">ZUS32045</a>