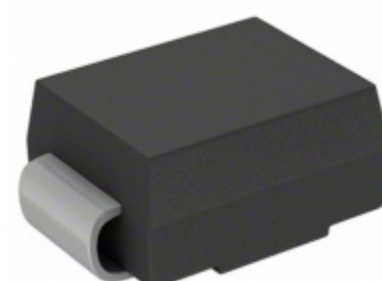


<b>SMBJ350A-13-F</b>	
Part Number	<a href="#">SMBJ350A-13-F</a>
Manufacturer	<a href="#">Diodes Incorporated</a>
Description	TVS DIODE 350VWM 567VC SMB
Quantity Available	6000 pcs in stock
Datasheets	
SMBJ350A-13-F Price	<a href="#">Request Price &amp; Lead Time Online</a> or Email us: <a href="mailto:Info@ariat-tech.com">Info@ariat-tech.com</a>


[GET A QUOTE](#)

Technical Information of SMBJ350A-13-F			
Manufacturer Part Number	<a href="#">SMBJ350A-13-F</a>	Category	<a href="#">Circuit Protection</a>
Manufacturer	<a href="#">Diodes Incorporated</a>	Description	TVS DIODE 350VWM 567VC SMB
Package / Case	Tape & Reel (TR)	Quantity Available	6000
Series	SMBJ	Operating Temperature	-55°C ~ 150°C (TJ)
Mounting Type	Surface Mount	Type	Zener
Capacitance @ Frequency	-	Applications	General Purpose
Package / Case	DO-214AA, SMB	Supplier Device Package	SMB
Unidirectional Channels	1	Voltage - Reverse Standoff (Typ)	350V
Voltage - Breakdown (Min)	391V	Voltage - Clamping (Max) @ Ipp	567V
Current - Peak Pulse (10/1000µs)	1.1A	Power - Peak Pulse	600W
Power Line Protection	No	Packaging	Tape & Reel (TR)

SMBJ350A-13-F 6000pcs New and Original in Stock, Find SMBJ350A-13-F Stock, Datasheet, PDF, Inventory at Ariat-Tech.com Online, Order SMBJ350A-13-F Diodes Incorporated with warrantied and confidence. RFQ SMBJ350A-13-F : [Info@Ariat-Tech.com](mailto:Info@Ariat-Tech.com)

Related parts for SMBJ350A-13-F				
Image	Part Number	Description	Manufacturer	Qty
	<a href="#">SMBJ350</a>	TVS DIODE 350VWM 595.35VC SMB	Hamlin / Littelfuse	500 pcs
	<a href="#">SMBJ350A-TP</a>	SMBJ350A-TP MCC	Micro Commercial Components	2500 pcs
	<a href="#">SMBJ350A-E</a>	TVS SURF MT DO214AA - SMBJ350A 3	Hamlin / Littelfuse	500 pcs
	<a href="#">SMBJ33HE3/5B</a>	TVS DIODE 33VWM 59VC SMB	Vishay / Semiconductor - Diodes Division	500 pcs
	<a href="#">SMBJ350A</a>	TVS DIODE 350VWM 567VC DO214AA	Bourns, Inc.	15000 pcs
	<a href="#">SMBJ33HE3/52</a>	TVS DIODE 33VWM 59VC SMB	Vishay / Semiconductor - Opto Division	500 pcs
	<a href="#">SMBJ350A</a>	TVS DIODE 350VWM 567VC SMB	Hamlin / Littelfuse	15000 pcs
	<a href="#">SMBJ350ATR</a>	TVS DIODE 350VWM 567VC SMB	Sensitron Semiconductor / SMC Diode Solutions	500 pcs
	<a href="#">SMBJ33D-M3/I</a>	TVS DIODE 33V 52.5V DO214AA	Electro-Films (EFI) / Vishay	500 pcs
	<a href="#">SMBJ350CA</a>	TVS DIODE 350VWM 567VC SMB	Hamlin / Littelfuse	21000 pcs
	<a href="#">SMBJ33HE3/5B</a>	TVS DIODE 33V 59V DO214AA	Electro-Films (EFI) / Vishay	500 pcs
	<a href="#">SMBJ33D-M3/I</a>	TVS DIODE 33VWM 52.5VC DO214AA	Vishay / Semiconductor - Diodes Division	500 pcs
	<a href="#">SMBJ350CA</a>	TVS DIODE 350VWM 567VC SMB	Bourns, Inc.	21000 pcs
	<a href="#">SMBJ33E3/TR13</a>	TVS DIODE 33VWM 59VC SMBJ	Microsemi	500 pcs
	<a href="#">SMBJ350CE3/TR13</a>	TVS DIODE 350VWM SMBJ	Microsemi	500 pcs
	<a href="#">SMBJ350AE3/TR13</a>	TVS DIODE 350VWM SMBJ	Microsemi	500 pcs
	<a href="#">SMBJ33HE3/52</a>	TVS DIODE 33VWM 59VC SMB	Vishay / Semiconductor - Diodes Division	500 pcs
	<a href="#">SMBJ350CAE3/TR13</a>	TVS DIODE 350VWM SMBJ	Microsemi	500 pcs
	<a href="#">SMBJ350C</a>	TVS DIODE 350VWM 595.35VC SMB	Hamlin / Littelfuse	500 pcs
	<a href="#">SMBJ350CATR</a>	TVS DIODE 350VWM 567VC SMB	Sensitron Semiconductor / SMC Diode Solutions	500 pcs

**IC Chips & IGBT Module - Hot Stock Part Number**

<a href="#">SMBJ30CA</a>	<a href="#">SMBJ30CA-13-F</a>	<a href="#">SMBJ30CA-E3/52</a>	<a href="#">SMBJ30CA-E3/52</a>	<a href="#">SMBJ30CA-TP</a>
<a href="#">SMBJ30CA-TR</a>	<a href="#">SMBJ30CAHE3/5B</a>	<a href="#">SMBJ30CAHE3/5B</a>	<a href="#">SMBJ30CAT3</a>	<a href="#">SMBJ33A-13-F</a>
<a href="#">SMBJ33A-E3/52</a>	<a href="#">SMBJ33A-E3/52</a>	<a href="#">SMBJ33A-E3/61</a>	<a href="#">SMBJ33A-TR</a>	<a href="#">SMBJ33CA</a>
<a href="#">SMBJ33CA</a>	<a href="#">SMBJ33CA</a>	<a href="#">SMBJ33CA-13-F</a>	<a href="#">SMBJ33CA-13-F</a>	<a href="#">SMBJ33CA-E3/52</a>
<a href="#">SMBJ33CA-E3/52</a>	<a href="#">SMBJ33CA-TR</a>	<a href="#">SMBJ33CAR4</a>	<a href="#">SMBJ350A</a>	<a href="#">SMBJ350A</a>
<a href="#">SMBJ350A-TP</a>	<a href="#">SMBJ350CA</a>	<a href="#">SMBJ350CA</a>	<a href="#">SMBJ36A-13-F</a>	<a href="#">SMBJ36A-E3/52</a>
<a href="#">SMBJ36A-E3/52</a>	<a href="#">SMBJ36A-E3/61</a>	<a href="#">SMBJ36A-TR</a>	<a href="#">SMBJ36CA</a>	<a href="#">SMBJ36CA</a>
<a href="#">SMBJ36CA</a>	<a href="#">SMBJ36CA-13-F</a>	<a href="#">SMBJ36CA-E3/2</a>	<a href="#">SMBJ36CA-E3/52</a>	<a href="#">SMBJ36CA-E3/52</a>
<a href="#">SMBJ36CAHE3/5B</a>	<a href="#">SMBJ36CAHE3/5B</a>	<a href="#">SMBJ39CA</a>	<a href="#">SMBJ3V3-E3/52</a>	<a href="#">SMBJ3V3-E3/52</a>
<a href="#">SMBJ3V3-E3/52T</a>	<a href="#">SMBJ3V3A</a>	<a href="#">SMBJ400A</a>	<a href="#">SMBJ400A</a>	<a href="#">SMBJ400CA</a>