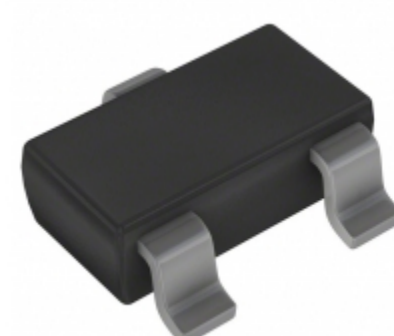


AP1701DWG-7	
Part Number	AP1701DWG-7
Manufacturer	Diodes Incorporated
Description	IC MPU RESET CIRC 3.08V SC59-3
Quantity Available	12574 pcs in stock
Datasheets	<a href="#">AP1701DWG-7.pdf</a>
AP1701DWG-7 Price	<a href="#">Request Price &amp; Lead Time Online</a> or Email us: <a href="mailto:Info@ariat-tech.com">Info@ariat-tech.com</a>


[GET A QUOTE](#)

Technical Information of AP1701DWG-7			
Manufacturer Part Number	AP1701DWG-7	Category	Integrated Circuits (ICs)
Manufacturer	Diodes Incorporated	Description	IC MPU RESET CIRC 3.08V SC59-3
Package / Case	Tape & Reel (TR)	Quantity Available	12574
Series	-	Operating Temperature	0°C ~ 70°C (TA)
Mounting Type	Surface Mount	Type	Simple Reset/Power-On Reset
Package / Case	TO-236-3, SC-59, SOT-23-3	Supplier Device Package	SC-59-3
Output	Push-Pull, Totem Pole	Reset	Active Low
Number of Voltages Monitored	1	Reset Timeout	100 ms Minimum
Voltage - Threshold	3.08V	Packaging	Tape & Reel (TR)

AP1701DWG-7 12574pcs New and Original in Stock, Find AP1701DWG-7 Stock, Datasheet, PDF, Inventory at Ariat-Tech.com Online, Order AP1701DWG-7 Diodes Incorporated with warrantied and confidence. RFQ AP1701DWG-7 : [Info@Ariat-Tech.com](mailto:Info@Ariat-Tech.com)

Related parts for AP1701DWG-7				
Image	Part Number	Description	Manufacturer	Qty
	<a href="#">AP1701AWLA</a>	AP1701AWLA ANACHIP	ANACHIP	12000 pcs
	<a href="#">AP1701EWL-B</a>	AP1701EWL-B DIODES	Digital View Inc.	1920 pcs
	<a href="#">AP1701CWG-7</a>	IC MPU RESET CIRC 4.00V SC59-3	Diodes Incorporated	6012 pcs
	<a href="#">AP1701BWL-7</a>	AP1701BWL-7 DIODES	Digital View Inc.	12000 pcs
	<a href="#">AP1701EWLA</a>	AP1701EWLA ANACHIP	ANACHIP	9000 pcs
	<a href="#">AP1701BWLA</a>	AP1701BWLA ANACHIP	ANACHIP	12000 pcs
	<a href="#">AP1701CWA</a>	AP1701CWA ANACHIP	ANACHIP	6000 pcs
	<a href="#">AP1701CWLA</a>	AP1701CWLA ANACHIP	ANACHIP	15000 pcs
	<a href="#">AP1701ESS-HL</a>	AP1701ESS-HL CHIPOWN	CHIPOWN	3000 pcs
	<a href="#">AP1701BWG-7</a>	IC MPU RESET CIRC 4.38V SC59-3	Diodes Incorporated	12000 pcs
	<a href="#">AP1701EWG-7</a>	IC MPU RESET CIRC 2.93V SC59-3	Diodes Incorporated	150000 pcs
	<a href="#">AP1701FWA</a>	AP1701FWA ANACHIP	ANACHIP	1900 pcs
	<a href="#">AP1701DWLA</a>	AP1701DWLA ANACHIP	ANACHIP	12000 pcs
	<a href="#">AP1701DWL-7</a>	AP1701DWL-7 DIODES	Digital View Inc.	12000 pcs
	<a href="#">AP1701EWA</a>	AP1701EWA ANACHIP	ANACHIP	966 pcs
	<a href="#">AP1701AWL-7</a>	IC MPU RESET CIRC 4.63V SC59-3	Diodes Incorporated	12000 pcs
	<a href="#">AP1701FWG-7</a>	IC MPU RESET CIRC 2.63V SC59-3	Diodes Incorporated	9000 pcs
	<a href="#">AP1701CWL-7</a>	IC MPU RESET CIRCUIT 4V SC59-3	Diodes Incorporated	12000 pcs
	<a href="#">AP1701AWG-7</a>	IC MPU RESET CIRC 4.63V SC59-3	Diodes Incorporated	12000 pcs
	<a href="#">AP1701EWL-7</a>	IC MPU RESET CIRC 2.93V SC59-3	Diodes Incorporated	39000 pcs

**IC Chips & IGBT Module - Hot Stock Part Number**

<a href="#">AP1685P-G1</a>	<a href="#">AP1686K6TR-G1</a>	<a href="#">AP1688MTR-G1</a>	<a href="#">AP1690M-G1</a>	<a href="#">AP1690MTR-G1</a>
<a href="#">AP1694AMTR-G1</a>	<a href="#">AP1694AS-13</a>	<a href="#">AP1694MTR-G1</a>	<a href="#">AP1695-20CS7-13</a>	<a href="#">AP1695MTR-G1</a>
<a href="#">AP1695P-G1</a>	<a href="#">AP16N50I-HF</a>	<a href="#">AP16N50P-HF</a>	<a href="#">AP16N50W-HF</a>	<a href="#">AP1701AWA</a>
<a href="#">AP1701AWG-7</a>	<a href="#">AP1701AWL-7</a>	<a href="#">AP1701AWLA</a>	<a href="#">AP1701BWG-7</a>	<a href="#">AP1701BWL-7</a>
<a href="#">AP1701BWLA</a>	<a href="#">AP1701CWA</a>	<a href="#">AP1701CWG-7</a>	<a href="#">AP1701CWL-7</a>	<a href="#">AP1701CWLA</a>
<a href="#">AP1701DWL-7</a>	<a href="#">AP1701DWLA</a>	<a href="#">AP1701ESS-HL</a>	<a href="#">AP1701EWA</a>	<a href="#">AP1701EWG-7</a>
<a href="#">AP1701EWL-7</a>	<a href="#">AP1701EWL-B</a>	<a href="#">AP1701EWLA</a>	<a href="#">AP1701FWA</a>	<a href="#">AP1701FWG-7</a>
<a href="#">AP1701FWL-7</a>	<a href="#">AP1701FWL-7-F</a>	<a href="#">AP1701FWLA</a>	<a href="#">AP1701GWG-7</a>	<a href="#">AP1701GWLA</a>
<a href="#">AP1702AWA</a>	<a href="#">AP1702AWG-7</a>	<a href="#">AP1702AWL-7</a>	<a href="#">AP1702AWLA</a>	<a href="#">AP1702BWG-7</a>
<a href="#">AP1702BWL-7</a>	<a href="#">AP1702BWLA</a>	<a href="#">AP1702CWG-7</a>	<a href="#">AP1702CWL-7</a>	<a href="#">AP1702CWLA</a>

Electronics Components Distributor – IC Chips & IGBT Module Supplier.

RFQ Email: [Info@ariat-tech.com](mailto:Info@ariat-tech.com) Website: <https://www.ariat-tech.com>

Copyright Notice © 1996-2019 ARIAT TECHNOLOGY LIMITED. All rights reserved.