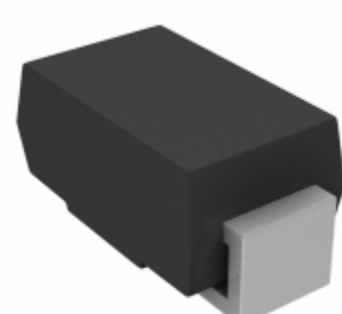


SMA5J18CHE3/5A	
Part Number	<a href="#">SMA5J18CHE3/5A</a>
Manufacturer	<a href="#">Vishay / Semiconductor - Diodes Division</a>
Description	TVS DIODE 18VWVM 32.2VC SMA
Quantity Available	500 pcs in stock
Datasheets	
SMA5J18CHE3/5A Price	<a href="#">Request Price &amp; Lead Time Online</a> or Email us: <a href="mailto:Info@ariat-tech.com">Info@ariat-tech.com</a>


[GET A QUOTE](#)

Technical Information of SMA5J18CHE3/5A			
Manufacturer Part Number	<a href="#">SMA5J18CHE3/5A</a>	Category	<a href="#">Circuit Protection</a>
Manufacturer	<a href="#">Vishay / Semiconductor - Diodes Division</a>	Description	TVS DIODE 18VWVM 32.2VC SMA
Package / Case	Tape & Reel (TR)	Quantity Available	500
Voltage - Reverse Standoff (Typ)	18V	Voltage - Clamping (Max) @ Ipp	32.2V
Voltage - Breakdown (Min)	20V	Type	Zener
Supplier Device Package	DO-214AC (SMA)	Series	Automotive, AEC-Q101, TransZorb®
Power Line Protection	No	Power - Peak Pulse	500W
Packaging	Tape & Reel (TR)	Package / Case	DO-214AC, SMA
Operating Temperature	-55°C ~ 150°C (TJ)	Mounting Type	Surface Mount
Current - Peak Pulse (10/1000µs)	15.5A	Capacitance @ Frequency	-
Bidirectional Channels	1	Applications	Automotive

SMA5J18CHE3/5A 500pcs New and Original in Stock, Find SMA5J18CHE3/5A Stock, Datasheet, PDF, Inventory at Ariat-Tech.com Online, Order SMA5J18CHE3/5A Vishay / Semiconductor - Diodes Division with warrantied and confidence. RFQ SMA5J18CHE3/5A : [Info@Ariat-Tech.com](mailto:Info@Ariat-Tech.com)

Related parts for SMA5J18CHE3/5A				
Image	Part Number	Description	Manufacturer	Quantity
	<a href="#">SMA5J18HE3/5A</a>	TVS DIODE 18VWVM 32.2VC SMA	Vishay Semiconductor Diodes Division	500 pcs
	<a href="#">SMA5J18C-E3/61</a>	TVS DIODE 18VWVM 32.2VC SMA	Vishay Semiconductor Diodes Division	500 pcs
	<a href="#">SMA5J18CAHE3/5A</a>	TVS DIODE 18V 29.2V DO214AC	Electro-Films (EFI) / Vishay	500 pcs
	<a href="#">SMA5J18CAHE3/5A</a>	TVS DIODE 18VWVM 29.2VC SMA	Vishay Semiconductor Diodes Division	500 pcs
	<a href="#">SMA5J18C-E3/61</a>	TVS DIODE 18V 32.2V DO214AC	Electro-Films (EFI) / Vishay	500 pcs
	<a href="#">SMA5J18CA-E3/61</a>	TVS DIODE 18V 29.2V DO214AC	Electro-Films (EFI) / Vishay	500 pcs
	<a href="#">SMA5J18HE3/61</a>	TVS DIODE 18VWVM 32.2VC SMA	Vishay Semiconductor Diodes Division	500 pcs
	<a href="#">SMA5J18HE3/5A</a>	TVS DIODE 18V 32.2V DO214AC	Electro-Films (EFI) / Vishay	500 pcs
	<a href="#">SMA5J18CA-E3/5A</a>	TVS DIODE 18V 29.2V DO214AC	Electro-Films (EFI) / Vishay	500 pcs
	<a href="#">SMA5J18CHE3/61</a>	TVS DIODE 18VWVM 32.2VC SMA	Vishay Semiconductor Diodes Division	500 pcs
	<a href="#">SMA5J18CA-E3/5A</a>	TVS DIODE 18VWVM 29.2VC SMA	Vishay Semiconductor Diodes Division	500 pcs
	<a href="#">SMA5J18CAHE3/61</a>	TVS DIODE 18V 29.2V DO214AC	Electro-Films (EFI) / Vishay	500 pcs
	<a href="#">SMA5J20-E3/5A</a>	TVS DIODE 20V 35.8V DO214AC	Electro-Films (EFI) / Vishay	500 pcs
	<a href="#">SMA5J20-E3/5A</a>	TVS DIODE 20VWVM 35.8VC SMA	Vishay Semiconductor Diodes Division	500 pcs
	<a href="#">SMA5J18CHE3/61</a>	TVS DIODE 18V 32.2V DO214AC	Electro-Films (EFI) / Vishay	500 pcs
	<a href="#">SMA5J18CHE3/5A</a>	TVS DIODE 18V 32.2V DO214AC	Electro-Films (EFI) / Vishay	500 pcs
	<a href="#">SMA5J18CA-E3/61</a>	TVS DIODE 18VWVM 29.2VC SMA	Vishay Semiconductor Diodes Division	500 pcs
	<a href="#">SMA5J18HE3/61</a>	TVS DIODE 18V 32.2V DO214AC	Electro-Films (EFI) / Vishay	500 pcs
	<a href="#">SMA5J18CAHE3/61</a>	TVS DIODE 18VWVM 29.2VC SMA	Vishay Semiconductor Diodes Division	500 pcs
	<a href="#">SMA5J20-E3/61</a>	TVS DIODE 20V 35.8V DO214AC	Electro-Films (EFI) / Vishay	500 pcs

<a href="#">SMA5J18CHE3/5A Stock</a>	<a href="#">SMA5J18CHE3/5A Price</a>	<a href="#">SMA5J18CHE3/5A Electronics</a>	<a href="#">SMA5J18CHE3/5A Components</a>
<a href="#">SMA5J18CHE3/5A Inventory</a>	<a href="#">SMA5J18CHE3/5A Digikey</a>	<a href="#">Supplier SMA5J18CHE3/5A</a>	<a href="#">Order SMA5J18CHE3/5A Online</a>
<a href="#">Inquiry SMA5J18CHE3/5A</a>	<a href="#">SMA5J18CHE3/5A Image</a>	<a href="#">SMA5J18CHE3/5A Picture</a>	<a href="#">SMA5J18CHE3/5A PDF</a>
<a href="#">SMA5J18CHE3/5A Datasheet</a>	<a href="#">Download SMA5J18CHE3/5A Datasheet</a>	<a href="#">Manufacturer Vishay / Semiconductor - Diodes Division</a>	