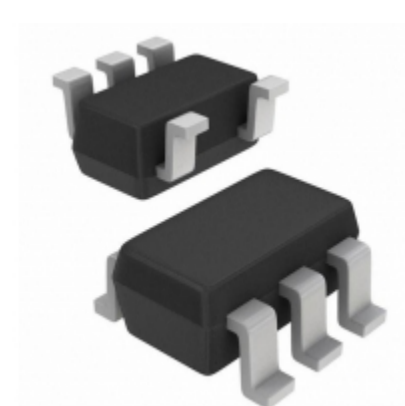


<b>ISL54103IHZ-T7</b>	
Part Number	<a href="#">ISL54103IHZ-T7</a>
Manufacturer	<a href="#">Intersil</a>
Description	IC ACCELERATOR DDCA DUAL SOT23-5
Quantity Available	1908 pcs in stock
Datasheets	<a href="#">ISL54103IHZ-T7.pdf</a>
ISL54103IHZ-T7 Price	<a href="#">Request Price &amp; Lead Time Online</a> or Email us: <a href="mailto:Info@ariat-tech.com">Info@ariat-tech.com</a>


[GET A QUOTE](#)

Technical Information of ISL54103IHZ-T7			
Manufacturer Part Number	<a href="#">ISL54103IHZ-T7</a>	Category	<a href="#">Integrated Circuits (ICs)</a>
Manufacturer	<a href="#">Intersil</a>	Description	IC ACCELERATOR DDCA DUAL SOT23-5
Package / Case	Tape & Reel (TR)	Quantity Available	1908
Series	-	Operating Temperature	-40°C ~ 85°C
Mounting Type	Surface Mount	Type	Cable
Package / Case	SC-74A, SOT-753	Supplier Device Package	SOT-23-5
Voltage - Supply	2.7 V ~ 5.5 V	Number of Terminations	2
Packaging	Tape & Reel (TR)		

ISL54103IHZ-T7 1908pcs New and Original in Stock, Find ISL54103IHZ-T7 Stock, Datasheet, PDF, Inventory at Ariat-Tech.com Online, Order ISL54103IHZ-T7 Intersil with warrantied and confidence. RFQ ISL54103IHZ-T7 : [Info@Ariat-Tech.com](mailto:Info@Ariat-Tech.com)

Related parts for ISL54103IHZ-T7				
Image	Part Number	Description	Manufacturer	Qty
	<a href="#">ISL54111REGD</a>	ISL54111REGD INTERSIL	Intersil	281 pcs
	<a href="#">ISL54100CQZ</a>	IC REGENERATOR TMDS 4:1 128-MQFP	Intersil	2677 pcs
	<a href="#">ISL54106CRZ</a>	IC TMDS REGENERATOR MUX	Intersil	1311 pcs
	<a href="#">ISL54105CRZ</a>	IC TMDS REGENERATOR 72-QFN	Intersil	500 pcs
	<a href="#">ISL54105ACRZ</a>	IC TMDS REGENERATOR 72-QFN	Intersil	500 pcs
	<a href="#">ISL54103IHZ-T7A</a>	IC ACCELERATOR DDCA DUAL SOT23-5	Intersil	500 pcs
	<a href="#">ISL54066IRTZ</a>	IC SWITCH SPDT DUAL 10TQFN	Intersil	500 pcs
	<a href="#">ISL54106ACRZ</a>	IC TMDS REGENERATOR MUX	Intersil	171 pcs
	<a href="#">ISL54111RZ</a>	ISL54111RZ intersil	Intersil	365 pcs
	<a href="#">ISL54066IRTZ-T</a>	IC SWITCH SPDT DUAL 10TQFN	Intersil	500 pcs
	<a href="#">ISL54101CQZ</a>	IC RGEN MUX TMDS 1:1 128-MQFP	Intersil	50 pcs
	<a href="#">ISL54102ACQZ</a>	IC TMDS REGEN W/MUX 128-MQFP	Intersil	500 pcs
	<a href="#">ISL5416EVAL1</a>	EVALUATION PLATFORM FOR ISL5416	Intersil	500 pcs
	<a href="#">ISL54066IRUZ-T</a>	IC SWITCH SPDT DUAL 10TQFN	Intersil	500 pcs
	<a href="#">ISL54100ACQZ</a>	IC TMDS REGENERATOR MUX 128-MQFP	Intersil	500 pcs
	<a href="#">ISL54101ACQZ</a>	IC TMDS REGEN W/MUX 128-MQFP	Intersil	500 pcs
	<a href="#">ISL54105ACRZ-EVALZ</a>	EVAL BOARD FOR ISL54105ACRZ	Intersil	500 pcs
	<a href="#">ISL54100AHDMI-EVALZ</a>	EVAL BOARD FOR ISL54100AHDMI	Intersil	500 pcs
	<a href="#">ISL54102CQZ</a>	IC TMDS REGEN W/MUX 128MQFP	Intersil	2405 pcs
	<a href="#">ISL5416KIZ</a>	ISL5416KIZ INTERSIL	Intersil	51 pcs

**IC Chips & IGBT Module - Hot Stock Part Number**

<a href="#">ISL45042IRZ</a>	<a href="#">ISL45042IRZ-T</a>	<a href="#">ISL45043IRZ</a>	<a href="#">ISL45043IRZ-T</a>	<a href="#">ISL485EIB-T</a>
<a href="#">ISL51002CQZ</a>	<a href="#">ISL51002CQZ-165</a>	<a href="#">ISL5120IH-T</a>	<a href="#">ISL5120IHZ-T</a>	<a href="#">ISL5123IH-T</a>
<a href="#">ISL5123IHZ-T</a>	<a href="#">ISL5211IRTZ</a>	<a href="#">ISL5216KI-1</a>	<a href="#">ISL5216KI-1Z</a>	<a href="#">ISL5216KIZ</a>
<a href="#">ISL5217KI</a>	<a href="#">ISL5291IUZ</a>	<a href="#">ISL53562IA</a>	<a href="#">ISL54050IRUZ-T</a>	<a href="#">ISL54053IRUZ-T</a>
<a href="#">ISL54056IRUZ-T</a>	<a href="#">ISL54058IRUZ-T</a>	<a href="#">ISL54062IRUZ-T</a>	<a href="#">ISL54100CQZ</a>	<a href="#">ISL54102CQZ</a>
<a href="#">ISL54106CRZ</a>	<a href="#">ISL54200IRUZ-T</a>	<a href="#">ISL54200IRZ-T</a>	<a href="#">ISL54203IRUZ-TS2378</a>	<a href="#">ISL54205AIRUZ-T</a>
<a href="#">ISL54205IRUZ-T</a>	<a href="#">ISL54209IRUZ-T</a>	<a href="#">ISL54211IRUZ-T</a>	<a href="#">ISL54214IRUZ-T</a>	<a href="#">ISL54217IRUZ-T</a>
<a href="#">ISL54220IUZ-T</a>	<a href="#">ISL54222AIRUZ-T</a>	<a href="#">ISL54222AIUZ</a>	<a href="#">ISL54226IRUZ-T</a>	<a href="#">ISL54230IIZ-T</a>
<a href="#">ISL54233IRTZ-T</a>	<a href="#">ISL54400IRUZ-T</a>	<a href="#">ISL54401IRUZ-T</a>	<a href="#">ISL54402IRUZ-T</a>	<a href="#">ISL54402IRUZ-TS2038</a>
<a href="#">ISL54405IRUZ-T</a>	<a href="#">ISL54405IVZ-T</a>	<a href="#">ISL54406IRUZ-T</a>	<a href="#">ISL55001IBZ</a>	<a href="#">ISL55001IBZ-T13</a>