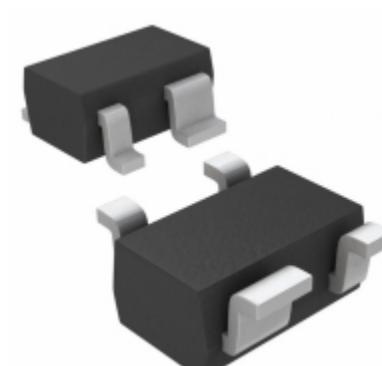


<b>MAX6384XS31D3-T</b>	
Part Number	MAX6384XS31D3-T
Manufacturer	Maxim Integrated
Description	IC MPU/RESET CIRC 3.08V SC70-4
Quantity Available	2222 pcs in stock
Datasheets	<a href="#">MAX6384XS31D3-T.pdf</a>
MAX6384XS31D3-T Price	<a href="#">Request Price &amp; Lead Time Online</a> or Email us: <a href="mailto:Info@ariat-tech.com">Info@ariat-tech.com</a>



[GET A QUOTE](#)

Technical Information of MAX6384XS31D3-T			
Manufacturer Part Number	MAX6384XS31D3-T	Category	Integrated Circuits (ICs)
Manufacturer	Maxim Integrated	Description	IC MPU/RESET CIRC 3.08V SC70-4
Package / Case	Tape & Reel (TR)	Quantity Available	2222
Series	-	Operating Temperature	-40°C ~ 125°C (TA)
Mounting Type	Surface Mount	Type	Simple Reset/Power-On Reset
Package / Case	SC-82A, SOT-343	Supplier Device Package	SC-70-4
Output	Push-Pull, Totem Pole	Reset	Active Low
Number of Voltages Monitored	1	Reset Timeout	140 ms Minimum
Voltage - Threshold	3.08V	Packaging	Tape & Reel (TR)

MAX6384XS31D3-T 2222pcs New and Original in Stock, Find MAX6384XS31D3-T Stock, Datasheet, PDF, Inventory at Ariat-Tech.com Online, Order MAX6384XS31D3-T Maxim Integrated with warrantied and confidence. RFQ MAX6384XS31D3-T : [Info@Ariat-Tech.com](mailto:Info@Ariat-Tech.com)

**Related parts for MAX6384XS31D3-T**

Image	Part Number	Description	Manufacturer	Qty
	<a href="#">MAX6384XS42D2+T</a>	IC MPU/RESET CIRC 4.20V SC70-4	Maxim Integrated	500 pcs
	<a href="#">MAX6384XS29D2-T</a>	IC MPU/RESET CIRC 2.93V SC70-4	Maxim Integrated	500 pcs
	<a href="#">MAX6384XS31D5+T</a>	IC MPU/RESET CIRC 3.08V SC70-4	Maxim Integrated	500 pcs
	<a href="#">MAX6384XS41D1+T</a>	IC MPU/RESET CIRC 4.10V SC70-4	Maxim Integrated	500 pcs
	<a href="#">MAX6384XS29D3-T</a>	IC MPU/RESET CIRC 2.93V SC70-4	Maxim Integrated	2410 pcs
	<a href="#">MAX6384XS29D1-T</a>	IC MPU/RESET CIRC 2.93V SC70-4	Maxim Integrated	2500 pcs
	<a href="#">MAX6384XS44D3-T</a>	IC MPU/RESET CIRC 4.38V SC70-4	Maxim Integrated	500 pcs
	<a href="#">MAX6384XS31D5-T</a>	IC MPU/RESET CIRC 3.08V SC70-4	Maxim Integrated	500 pcs
	<a href="#">MAX6384XS29D1+T</a>	IC MPU/RESET CIRC 2.93V SC70-4	Maxim Integrated	500 pcs
	<a href="#">MAX6384XS42D2-T</a>	IC MPU/RESET CIRC 4.20V SC70-4	Maxim Integrated	500 pcs
	<a href="#">MAX6384XS44D3+T</a>	IC MPU/RESET CIRC 4.38V SC70-4	Maxim Integrated	500 pcs
	<a href="#">MAX6384XS31D3+T</a>	IC MPU/RESET CIRC 3.08V SC70-4	Maxim Integrated	500 pcs
	<a href="#">MAX6384XS29D2+T</a>	IC MPU/RESET CIRC 2.93V SC70-4	Maxim Integrated	500 pcs
	<a href="#">MAX6384XS29D3+T</a>	IC MPU/RESET CIRC 2.93V SC70-4	Maxim Integrated	10100 pcs
	<a href="#">MAX6384XS46D2+T</a>	IC MPU/RESET CIRC 4.63V SC70-4	Maxim Integrated	500 pcs
	<a href="#">MAX6384XS29D3</a>	MAX6384XS29D3 MAXIM	MAXIM	11500 pcs
	<a href="#">MAX6384XS40D3+T</a>	IC MPU/RESET CIRC 4.00V SC70-4	Maxim Integrated	500 pcs
	<a href="#">MAX6384XS41D4+T</a>	IC MPU/RESET CIRC 4.10V SC70-4	Maxim Integrated	500 pcs
	<a href="#">MAX6384XS29D4-T</a>	IC MPU/RESET CIRC 2.93V SC70-4	Maxim Integrated	500 pcs
	<a href="#">MAX6384XS29D4+T</a>	IC MPU/RESET CIRC 2.93V SC70-4	Maxim Integrated	500 pcs

**IC Chips & IGBT Module - Hot Stock Part Number**

<a href="#">MAX6381XR28D2-T</a>	<a href="#">MAX6381XR39D2+T</a>	<a href="#">MAX6382XR26D3+T</a>	<a href="#">MAX6382XR44D3+T</a>	<a href="#">MAX6383LT43D3+</a>
<a href="#">MAX6383LT46D3+T</a>	<a href="#">MAX6383XR17D3-T</a>	<a href="#">MAX6383XR22D3</a>	<a href="#">MAX6383XR22D3-T</a>	<a href="#">MAX6383XR23D3+T</a>
<a href="#">MAX6383XR40D1</a>	<a href="#">MAX6383XR40D1+T</a>	<a href="#">MAX6383XR40D1-T</a>	<a href="#">MAX6383XR46D2</a>	<a href="#">MAX6384SX23</a>
<a href="#">MAX6384XS16D3+T</a>	<a href="#">MAX6384XS17D1+T</a>	<a href="#">MAX6384XS17D3+T</a>	<a href="#">MAX6384XS23D6-T</a>	<a href="#">MAX6384XS26D4+T</a>
<a href="#">MAX6384XS26D4-T</a>	<a href="#">MAX6384XS28D1-T</a>	<a href="#">MAX6384XS29D3</a>	<a href="#">MAX6384XS29D3+T</a>	<a href="#">MAX6384XS29D3-T</a>
<a href="#">MAX6384XS46D3+T</a>	<a href="#">MAX6386XS17D3-T</a>	<a href="#">MAX6386XS22D3+T</a>	<a href="#">MAX6386XS26D2+T</a>	<a href="#">MAX6386XS26D3+T</a>
<a href="#">MAX6386XS29D2-T</a>	<a href="#">MAX6386XS29D3+T</a>	<a href="#">MAX6387XS26D3-T</a>	<a href="#">MAX6387XS28D2+T</a>	<a href="#">MAX6388XS31D3+T</a>
<a href="#">MAX6388XS46D3-T</a>	<a href="#">MAX6389XS16D3-T</a>	<a href="#">MAX6389XS29D2</a>	<a href="#">MAX6389XS31D2+T</a>	<a href="#">MAX6389XS31D3+T</a>
<a href="#">MAX6389XS32D2+T</a>	<a href="#">MAX6390XS29D4+T</a>	<a href="#">MAX6390XS31D4+T</a>	<a href="#">MAX6392KA16-T</a>	<a href="#">MAX6392KA29</a>
<a href="#">MAX6392KA29+T</a>	<a href="#">MAX6394US310D3+T</a>	<a href="#">MAX6394US480D3/V+T</a>	<a href="#">MAX6397SATA+T</a>	<a href="#">MAX6398ATT+T</a>