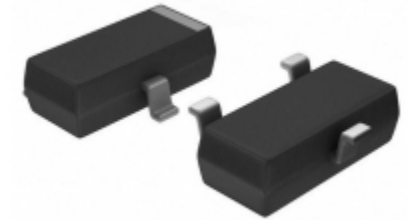


<b>ADM810LARTZ-REEL</b>	
Part Number	<a href="#">ADM810LARTZ-REEL</a>
Manufacturer	ADI (Analog Devices, Inc.)
Description	IC SUPERVISOR MPU 4.63V SOT23
Quantity Available	500 pcs in stock
Datasheets	<a href="#">ADM810LARTZ-REEL.pdf</a>
ADM810LARTZ-REEL Price	<a href="#">Request Price &amp; Lead Time Online</a> or Email us: <a href="mailto:Info@ariat-tech.com">Info@ariat-tech.com</a>


[GET A QUOTE](#)

Technical Information of ADM810LARTZ-REEL			
Manufacturer Part Number	<a href="#">ADM810LARTZ-REEL</a>	Category	Integrated Circuits (ICs)
Manufacturer	ADI (Analog Devices, Inc.)	Description	IC SUPERVISOR MPU 4.63V SOT23
Package / Case	Tape & Reel (TR)	Quantity Available	500
Voltage - Threshold	4.63V	Type	Simple Reset/Power-On Reset
Supplier Device Package	SOT-23-3	Series	-
Reset Timeout	140 ms Minimum	Reset	Active High
Packaging	Tape & Reel (TR)	Package / Case	TO-236-3, SC-59, SOT-23-3
Output	Push-Pull, Totem Pole	Operating Temperature	-40°C ~ 125°C (TA)
Number of Voltages Monitored	1	Mounting Type	Surface Mount
Moisture Sensitivity Level (MSL)	1 (Unlimited)	Manufacturer Standard Lead Time	7 Weeks
Lead Free Status / RoHS Status	Lead free / RoHS Compliant	Detailed Description	Supervisor Push-Pull, Totem Pole 1 Channel SOT-23-3
Base Part Number	ADM810		

ADM810LARTZ-REEL 500pcs New and Original in Stock, Find ADM810LARTZ-REEL Stock, Datasheet, PDF, Inventory at Ariat-Tech.com Online, Order ADM810LARTZ-REEL with warrantied and confidence. RFQ ADM810LARTZ-REEL : [Info@Ariat-Tech.com](mailto:Info@Ariat-Tech.com)

Related parts for ADM810LARTZ-REEL				
Image	Part Number	Description	Manufacturer	Quantity
	<a href="#">ADM810MART-REEL</a>	ADM810MART-REEL AD	AD	6923 pcs
	<a href="#">ADM810LARTZ-REEL7</a>	IC SUPERVSR PUSH PULL 4.63V SOT23	ADI (Analog Devices, Inc.)	35520 pcs
	<a href="#">ADM810JARTZ-REEL7</a>	IC SUPERVISORY CIRCUIT SOT-23	ADI (Analog Devices, Inc.)	900 pcs
	<a href="#">ADM810MART</a>	ADM810MART NXP/PHILI	NXP/PHILI	3460 pcs
	<a href="#">ADM810LAKSZ-REEL7</a>	IC SUPERVISOR MPU 4.63V SC-70-3	ADI (Analog Devices, Inc.)	500 pcs
	<a href="#">ADM810MARTZ-REEL7</a>	IC SUPERVISOR MPU 4.38V SOT23	ADI (Analog Devices, Inc.)	12000 pcs
	<a href="#">ADM810LART-RL7</a>	ADM810LART-RL7 AD	AD	4092 pcs
	<a href="#">ADM810JAKSZ-REEL7</a>	IC SUPERVISOR MPU 4.0V SC-70-3	ADI (Analog Devices, Inc.)	500 pcs
	<a href="#">ADM810LARTZ</a>	ADM810LARTZ AD	AD	7815 pcs
	<a href="#">ADM810MAKS-REEL7</a>	IC SUPERVISOR P/P 4.38V SC70-3	ADI (Analog Devices, Inc.)	500 pcs
	<a href="#">ADM810LAKS-REEL7</a>	IC SUPERVISOR P/P 4.63V SC70-3	ADI (Analog Devices, Inc.)	500 pcs
	<a href="#">ADM810JARTZ-REEL</a>	IC SUPERVISORY CIRCUIT SOT-23	ADI (Analog Devices, Inc.)	100 pcs
	<a href="#">ADM810MARTZ</a>	ADM810MARTZ AD	AD	350 pcs
	<a href="#">ADM810LAKSZ-REEL</a>	IC SUPERVISOR MPU 4.63V SC-70-3	ADI (Analog Devices, Inc.)	3380 pcs
	<a href="#">ADM810MAKSZ-REEL7</a>	IC SUPERVISOR MPU 4.38V SC-70-3	ADI (Analog Devices, Inc.)	1000 pcs
	<a href="#">ADM810MAKSZ-REEL</a>	IC SUPERVISOR MPU 4.38V SC-70-3	ADI (Analog Devices, Inc.)	500 pcs
	<a href="#">ADM810LART-REEL7</a>	IC SUPERVSR PUSH PULL 4.63V SOT23	ADI (Analog Devices, Inc.)	23000 pcs
	<a href="#">ADM810MARTZ-REEL</a>	IC SUPERVISOR MPU 4.38V SOT23	ADI (Analog Devices, Inc.)	100 pcs
	<a href="#">ADM810MART-REEL7</a>	IC SUPERVSR PUSH PULL 4.38V SOT23	ADI (Analog Devices, Inc.)	35520 pcs
	<a href="#">ADM810LART-REEL</a>	IC SUPERVSR PUSH PULL 4.63V SOT23	ADI (Analog Devices, Inc.)	500 pcs

<a href="#">ADM810LARTZ-REEL Stock</a>	<a href="#">ADM810LARTZ-REEL Price</a>	<a href="#">ADM810LARTZ-REEL Electronics</a>	<a href="#">ADM810LARTZ-REEL Components</a>
<a href="#">ADM810LARTZ-REEL Inventory</a>	<a href="#">ADM810LARTZ-REEL Digikay</a>	<a href="#">Supplier ADM810LARTZ-REEL</a>	<a href="#">Order ADM810LARTZ-REEL Online</a>
<a href="#">Inquiry ADM810LARTZ-REEL</a>	<a href="#">ADM810LARTZ-REEL Image</a>	<a href="#">ADM810LARTZ-REEL Picture</a>	<a href="#">ADM810LARTZ-REEL PDF</a>
<a href="#">ADM810LARTZ-REEL Datasheet</a>	<a href="#">Download ADM810LARTZ-REEL Datasheet</a>	<a href="#">Manufacturer</a>	