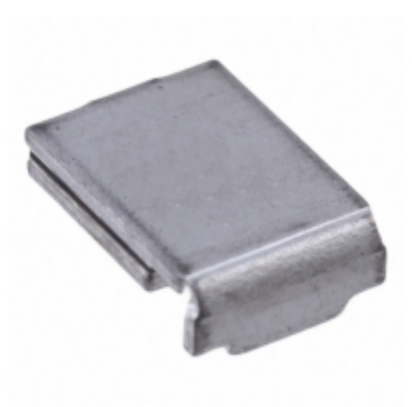


<b>MF-SM250-2</b>	
Part Number	<a href="#">MF-SM250-2</a>
Manufacturer	<a href="#">Bourns, Inc.</a>
Description	FUSE RESETTABLE 2.5A 15V SMD
Quantity Available	733 pcs in stock
Datasheets	
MF-SM250-2 Price	<a href="#">Request Price &amp; Lead Time Online</a> or Email us: <a href="mailto:Info@ariat-tech.com">Info@ariat-tech.com</a>


[GET A QUOTE](#)

Technical Information of MF-SM250-2			
Manufacturer Part Number	<a href="#">MF-SM250-2</a>	Category	<a href="#">Circuit Protection</a>
Manufacturer	<a href="#">Bourns, Inc.</a>	Description	FUSE RESETTABLE 2.5A 15V SMD
Package / Case	Tape & Reel (TR)	Quantity Available	733
Series	Multifuse®, MF-SM	Operating Temperature	-40°C ~ 85°C
Approvals	cURus, TUV	Ratings	AEC-Q200
Mounting Type	Surface Mount	Size / Dimension	0.344" L x 0.264" W (8.75mm x 6.71mm)
Height - Seated (Max)	-	Type	Polymeric
Lead Spacing	-	Package / Case	2-SMD
Thickness (Max)	0.118" (3.00mm)	Voltage - Max	15V
Current - Max	100A	Current - Hold (Ih) (Max)	2.5A
Current - Trip (It)	5A	Time to Trip	25s
Resistance - Initial (Ri) (Min)	24 mOhm	Resistance - Post Trip (R1) (Max)	85 mOhm
Resistance - 25°C (Typ)	-	Packaging	Tape & Reel (TR)

MF-SM250-2 733pcs New and Original in Stock, Find MF-SM250-2 Stock, Datasheet, PDF, Inventory at Ariat-Tech.com Online, Order MF-SM250-2 Bourns, Inc. with warrantied and confidence. RFQ MF-SM250-2 : [Info@Ariat-Tech.com](mailto:Info@Ariat-Tech.com)

Related parts for MF-SM250-2				
Image	Part Number	Description	Manufacturer	Qty
	<a href="#">MF-SM150-2-006</a>	FUSE RESETTABLE	Bourns, Inc.	500 pcs
	<a href="#">MF-SMDF030-2</a>	PTC RESETTABLE .30A 60V 2018	Bourns, Inc.	500 pcs
	<a href="#">MF-SM260-2</a>	FUSE RESETTABLE 2.6A HOLD SMD	Bourns, Inc.	441 pcs
	<a href="#">MF-SM260-2-99</a>	FUSE RESETTABLE	Bourns, Inc.	500 pcs
	<a href="#">MF-SM150-2-99</a>	FUSE RESETTABLE	Bourns, Inc.	844 pcs
	<a href="#">MF-SM200-2-H5</a>	MF-SM200-2-H5 BOURNS	Bourns, Inc.	3000 pcs
	<a href="#">MF-SM200-2-006</a>	FUSE RESETTABLE	Bourns, Inc.	500 pcs
	<a href="#">MF-SM150-2</a>	FUSE RESETTABLE 1.5A 15V SMD	Bourns, Inc.	2458 pcs
	<a href="#">MF-SM250-2-006</a>	FUSE RESETTABLE	Bourns, Inc.	500 pcs
	<a href="#">MF-SM150/33-2-99</a>	FUSE RESETTABLE	Bourns, Inc.	10500 pcs
	<a href="#">MF-SM185/33-2</a>	FUSE RESETTABLE 1.8A 33V SMD	Bourns, Inc.	727 pcs
	<a href="#">MF-SM250-2-H5</a>	MF-SM250-2-H5 BOURNS	Bourns, Inc.	900 pcs
	<a href="#">MF-SM200-2</a>	FUSE RESETTABLE 2.0A 15V SMD	Bourns, Inc.	1300 pcs
	<a href="#">MF-SM300-2-99</a>	FUSE RESETTABLE	Bourns, Inc.	1999 pcs
	<a href="#">MF-SM250-2-99</a>	FUSE RESETTABLE	Bourns, Inc.	1500 pcs
	<a href="#">MF-SM300-2</a>	FUSE RESETTABLE 3.0A HOLD SMD	Bourns, Inc.	500 pcs
	<a href="#">MF-SM200-2-99</a>	FUSE RESETTABLE	Bourns, Inc.	765 pcs
	<a href="#">MF-SM150/33-2</a>	FUSE RESETTABLE 1.5A 33V SMD	Bourns, Inc.	1197 pcs
	<a href="#">MF-SMDF030-2</a>	PTC RESETTABLE .30A 60V 2018	Bridgelux, Inc.	500 pcs
	<a href="#">MF-SMDF050-2</a>	PTC RESETTABLE .55A 60V 2018	Bourns, Inc.	30000 pcs

**IC Chips & IGBT Module - Hot Stock Part Number**

<a href="#">MF-RG500-0</a>	<a href="#">MF-RHT1300-0</a>	<a href="#">MF-RM055/240-2</a>	<a href="#">MF-RX-12/250-T-2</a>	<a href="#">MF-RX012/250-T-2</a>
<a href="#">MF-RX135</a>	<a href="#">MF-RX375/72-2</a>	<a href="#">MF-SM013/250-2</a>	<a href="#">MF-SM013/250-A05-2</a>	<a href="#">MF-SM013/250V-2</a>
<a href="#">MF-SM030-2</a>	<a href="#">MF-SM030-2-H5</a>	<a href="#">MF-SM050-2</a>	<a href="#">MF-SM050-2-99</a>	<a href="#">MF-SM050/60-2-H5</a>
<a href="#">MF-SM075-2</a>	<a href="#">MF-SM075/60-2</a>	<a href="#">MF-SM100-2</a>	<a href="#">MF-SM100-2-99</a>	<a href="#">MF-SM125</a>
<a href="#">MF-SM125-2</a>	<a href="#">MF-SM125-2-99</a>	<a href="#">MF-SM150-2</a>	<a href="#">MF-SM150-2-99</a>	<a href="#">MF-SM150/33-2</a>
<a href="#">MF-SM150/33-2-99</a>	<a href="#">MF-SM185/33-2</a>	<a href="#">MF-SM200-2</a>	<a href="#">MF-SM200-2-99</a>	<a href="#">MF-SM200-2-H5</a>
<a href="#">MF-SM250-2-99</a>	<a href="#">MF-SM250-2-H5</a>	<a href="#">MF-SMDF050-2</a>	<a href="#">MF-SMDF150-2</a>	<a href="#">MF-USMD035-2</a>
<a href="#">MF-USMD050-2</a>	<a href="#">MF-USMD075-2</a>	<a href="#">MF-USMF005-2</a>	<a href="#">MF-USMF010-2</a>	<a href="#">MF-USMF020</a>
<a href="#">MF-USMF035-2</a>	<a href="#">MF-USMF050-2</a>	<a href="#">MF-USMF075-2</a>	<a href="#">MF-USMF075-2-H5</a>	<a href="#">MF-USMF110-2-H5</a>
<a href="#">MF-USMF150-2</a>	<a href="#">MF-USMF150-2-H5</a>	<a href="#">MF-USMF175X-2</a>	<a href="#">MF-VS210-0</a>	<a href="#">MF-VS210N-O</a>