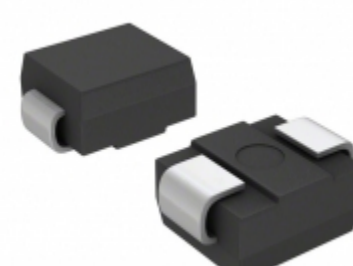


<b>SMBJ110A-M3/52</b>	
Part Number	<a href="#">SMBJ110A-M3/52</a>
Manufacturer	<a href="#">Vishay / Semiconductor - Diodes Division</a>
Description	TVS DIODE 110VWM 177VC DO-215AA
Quantity Available	500 pcs in stock
Datasheets	
SMBJ110A-M3/52 Price	<a href="#">Request Price &amp; Lead Time Online</a> or Email us: <a href="mailto:Info@ariat-tech.com">Info@ariat-tech.com</a>


[GET A QUOTE](#)

Technical Information of SMBJ110A-M3/52			
Manufacturer Part Number	<a href="#">SMBJ110A-M3/52</a>	Category	<a href="#">Circuit Protection</a>
Manufacturer	<a href="#">Vishay / Semiconductor - Diodes Division</a>	Description	TVS DIODE 110VWM 177VC DO-215AA
Package / Case	Tape & Reel (TR)	Quantity Available	500
Voltage - Reverse Standoff (Typ)	110V	Voltage - Clamping (Max) @ Ipp	177V
Voltage - Breakdown (Min)	122V	Unidirectional Channels	1
Type	Zener	Supplier Device Package	DO-214AA (SMBJ)
Series	TransZorb®	Power Line Protection	No
Power - Peak Pulse	600W	Packaging	Tape & Reel (TR)
Package / Case	DO-214AA, SMB	Operating Temperature	-55°C ~ 150°C (TJ)
Mounting Type	Surface Mount	Current - Peak Pulse (10/1000µs)	3.4A
Capacitance @ Frequency	-	Applications	General Purpose

SMBJ110A-M3/52 500pcs New and Original in Stock, Find SMBJ110A-M3/52 Stock, Datasheet, PDF, Inventory at Ariat-Tech.com Online, Order SMBJ110A-M3/52 Vishay / Semiconductor - Diodes Division with warrantied and confidence. RFQ SMBJ110A-M3/52 : [Info@Ariat-Tech.com](mailto:Info@Ariat-Tech.com)

Related parts for SMBJ110A-M3/52				
Image	Part Number	Description	Manufacturer	Quantity
	<a href="#">SMBJ110A M4G</a>	TVS DIODE 110V 177V DO214AA	TSC (Taiwan Semiconductor)	500 pcs
	<a href="#">SMBJ110AE3/TR13</a>	TVS DIODE 110VWM 177VC SMBJ	Microsemi Corporation	500 pcs
	<a href="#">SMBJ110A-E3/52</a>	TVS DIODE 110VWM 177VC SMB	Electro-Films (EFI) / Vishay	2250 pcs
	<a href="#">SMBJ110A-M3/52</a>	TVS DIODE 110V 177V DO214AA	Electro-Films (EFI) / Vishay	500 pcs
	<a href="#">SMBJ110A-M3/5B</a>	TVS DIODE 110VWM 177VC DO-215AA	Vishay Semiconductor Diodes Division	500 pcs
	<a href="#">SMBJ110AHE3/52</a>	TVS DIODE 110V 177V DO214AA	Electro-Films (EFI) / Vishay	500 pcs
	<a href="#">SMBJ110AHE3/5B</a>	TVS DIODE 110VWM 177VC SMB	Vishay Semiconductor Diodes Division	500 pcs
	<a href="#">SMBJ110A R5G</a>	TVS DIODE 110V 177V DO214AA	TSC (Taiwan Semiconductor)	500 pcs
	<a href="#">SMBJ110AHE3/52</a>	TVS DIODE 110VWM 177VC SMB	Vishay Semiconductor Diodes Division	500 pcs
	<a href="#">SMBJ110A-13</a>	TVS DIODE 110VWM 177VC SMB	Diodes Incorporated	18000 pcs
	<a href="#">SMBJ110A-TP</a>	TVS DIODE 110VWM 177VC SMB	Micro Commercial Co	500 pcs
	<a href="#">SMBJ110A-M3/5B</a>	TVS DIODE 110V 177V DO214AA	Electro-Films (EFI) / Vishay	500 pcs
	<a href="#">SMBJ110A-03</a>	SMBJ110A-03 VISHAY	VISHAY	3000 pcs
	<a href="#">SMBJ110A-13-F</a>	TVS DIODE 110VWM 177VC SMB	Diodes Incorporated	3450 pcs
	<a href="#">SMBJ110A-E3/52</a>	TVS DIODE 110VWM 177VC SMB	Vishay Semiconductor Diodes Division	2250 pcs
	<a href="#">SMBJ110A-E3/5B</a>	TVS DIODE 110V 177V DO214AA	Electro-Films (EFI) / Vishay	500 pcs
	<a href="#">SMBJ110A-E3/5B</a>	TVS DIODE 110VWM 177VC SMB	Vishay Semiconductor Diodes Division	500 pcs
	<a href="#">SMBJ110AHM4G</a>	TVS DIODE 110V 177V DO214AA	TSC (Taiwan Semiconductor)	500 pcs
	<a href="#">SMBJ110A-TP</a>	TVS DIODE 110VWM 177VC SMB	Micro Commercial Co	500 pcs
	<a href="#">SMBJ110AHE3/5B</a>	TVS DIODE 110V 177V DO214AA	Electro-Films (EFI) / Vishay	500 pcs

<a href="#">SMBJ110A-M3/52 Stock</a>	<a href="#">SMBJ110A-M3/52 Price</a>	<a href="#">SMBJ110A-M3/52 Electronics</a>	<a href="#">SMBJ110A-M3/52 Components</a>
<a href="#">SMBJ110A-M3/52 Inventory</a>	<a href="#">SMBJ110A-M3/52 Digikey</a>	<a href="#">Supplier SMBJ110A-M3/52</a>	<a href="#">Order SMBJ110A-M3/52 Online</a>
<a href="#">Inquiry SMBJ110A-M3/52</a>	<a href="#">SMBJ110A-M3/52 Image</a>	<a href="#">SMBJ110A-M3/52 Picture</a>	<a href="#">SMBJ110A-M3/52 PDF</a>
<a href="#">SMBJ110A-M3/52 Datasheet</a>	<a href="#">Download SMBJ110A-M3/52 Datasheet</a>	<a href="#">Manufacturer Vishay / Semiconductor - Diodes Division</a>	