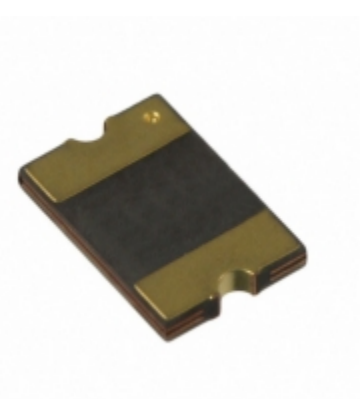


<b>MF-MSMF020-2</b>	
Part Number	<a href="#">MF-MSMF020-2</a>
Manufacturer	<a href="#">Bourns, Inc.</a>
Description	PTC RESETTABLE .20A 30V 1812
Quantity Available	9930 pcs in stock
Datasheets	
MF-MSMF020-2 Price	<a href="#">Request Price &amp; Lead Time Online</a> or Email us: <a href="mailto:Info@ariat-tech.com">Info@ariat-tech.com</a>


[GET A QUOTE](#)

Technical Information of MF-MSMF020-2			
Manufacturer Part Number	<a href="#">MF-MSMF020-2</a>	Category	<a href="#">Circuit Protection</a>
Manufacturer	<a href="#">Bourns, Inc.</a>	Description	PTC RESETTABLE .20A 30V 1812
Package / Case	Tape & Reel (TR)	Quantity Available	9930
Series	Multifuse®, MF-MSMF	Operating Temperature	-40°C ~ 85°C
Approvals	cURus, TUV	Ratings	AEC-Q200
Mounting Type	Surface Mount	Size / Dimension	0.179" L x 0.128" W (4.55mm x 3.24mm)
Height - Seated (Max)	-	Type	Polymeric
Lead Spacing	-	Package / Case	1812 (4532 Metric), Concave
Thickness (Max)	0.043" (1.10mm)	Voltage - Max	30V
Current - Max	80A	Current - Hold (Ih) (Max)	200mA
Current - Trip (It)	400mA	Time to Trip	60ms
Resistance - Initial (Ri) (Min)	400 mOhm	Resistance - Post Trip (R1) (Max)	6 Ohm
Resistance - 25°C (Typ)	-	Packaging	Tape & Reel (TR)

MF-MSMF020-2 9930pcs New and Original in Stock, Find MF-MSMF020-2 Stock, Datasheet, PDF, Inventory at Ariat-Tech.com Online, Order MF-MSMF020-2 Bourns, Inc. with warrantied and confidence. RFQ MF-MSMF020-2 : [Info@Ariat-Tech.com](mailto:Info@Ariat-Tech.com)

Related parts for MF-MSMF020-2				
Image	Part Number	Description	Manufacturer	Qty
	<a href="#">MF-MSMF030-2</a>	PTC RESETTABLE .30A 30V 1812	Bourns, Inc.	6000 pcs
	<a href="#">MF-MSMD150-2-1.5A</a>	MF-MSMD150-2-1.5A BOURNS	Bourns, Inc.	210 pcs
	<a href="#">MF-MSMF014-2</a>	PTC RESETTABLE .14A 60V 1812	Bourns, Inc.	5700 pcs
	<a href="#">MF-MSMD125-2</a>	FUSE RESETTABLE 1.25A HOLD SMD	Bourns, Inc.	500 pcs
	<a href="#">MF-MSMD075-2-0.75A</a>	MF-MSMD075-2-0.75A BOURNS	Bourns, Inc.	1111 pcs
	<a href="#">MF-MSMF110/16-2</a>	PTC RESETTABLE 1.10A 16V 1812	Bourns, Inc.	5995 pcs
	<a href="#">MF-MSMF050-2</a>	PTC RESETTABLE .50A 15V 1812	Bourns, Inc.	8535 pcs
	<a href="#">MF-MSMF110-2</a>	PTC RESETTABLE 1.10A 6V 1812	Bourns, Inc.	10000 pcs
	<a href="#">MF-MSMD160-2</a>	MF-MSMD160-2 BOURNS	Bourns, Inc.	1730 pcs
	<a href="#">MF-MSMF075/24-2</a>	PTC RESETTABLE .75A 24V 1812	Bourns, Inc.	40000 pcs
	<a href="#">MF-MSMD150-2</a>	FUSE RESETTABLE 1.50A HOLD SMD	Bourns, Inc.	13200 pcs
	<a href="#">MF-MSMF075/30-2</a>	PTC RESETTABLE	Bourns, Inc.	2000 pcs
	<a href="#">MF-MSMD110/16-2</a>	FUSE RESETTABLE 1.1A 16V SMD	Bourns, Inc.	2000 pcs
	<a href="#">MF-MSMD110-2</a>	FUSE RESETTABLE 1.10A HOLD SMD	Bourns, Inc.	9000 pcs
	<a href="#">MF-MSMF010-2</a>	PTC RESETTABLE .10A 60V 1812	Bourns, Inc.	3000 pcs
	<a href="#">MF-MSMF020/60-2</a>	FUSE PTC RESETTBE 0.2A 60V 1812	Bourns, Inc.	600 pcs
	<a href="#">MF-MSMF110/24X-2</a>	FUSE PTC RESET 1.10A SMD 1812	Bourns, Inc.	1500 pcs
	<a href="#">MF-MSMF075-2</a>	PTC RESETTABLE .75A 13.2V 1812	Bourns, Inc.	30000 pcs
	<a href="#">MF-MSMF020-2-B7</a>	MF-MSMF020-2-B7 BOURNS	Bourns, Inc.	11799 pcs
	<a href="#">MF-MSMD075-2</a>	FUSE RESETTABLE .75A HOLD SMD	Bourns, Inc.	2000 pcs

**IC Chips & IGBT Module - Hot Stock Part Number**

<a href="#">MF-FSMF020X-2</a>	<a href="#">MF-FSMF035X-2</a>	<a href="#">MF-LSMF300/24X-2</a>	<a href="#">MF-MSF200L-2</a>	<a href="#">MF-MSMC035-2</a>
<a href="#">MF-MSMC050</a>	<a href="#">MF-MSMC050-2</a>	<a href="#">MF-MSMC075-2</a>	<a href="#">MF-MSMC100-2/1812-1A</a>	<a href="#">MF-MSMC110-2</a>
<a href="#">MF-MSMC110-2-1.1A</a>	<a href="#">MF-MSMD020-2</a>	<a href="#">MF-MSMD050-2-0.5A</a>	<a href="#">MF-MSMD075-2</a>	<a href="#">MF-MSMD075-2-0.75A</a>
<a href="#">MF-MSMD110-2</a>	<a href="#">MF-MSMD110/16-2</a>	<a href="#">MF-MSMD150-2</a>	<a href="#">MF-MSMD160-2</a>	<a href="#">MF-MSMF010-2</a>
<a href="#">MF-MSMF014-2</a>	<a href="#">MF-MSMF020-2-B7</a>	<a href="#">MF-MSMF030-2</a>	<a href="#">MF-MSMF050-2</a>	<a href="#">MF-MSMF075-2</a>
<a href="#">MF-MSMF075/24-2</a>	<a href="#">MF-MSMF075/30-2</a>	<a href="#">MF-MSMF110-2</a>	<a href="#">MF-MSMF110/16-2</a>	<a href="#">MF-MSMF110/24X-2</a>
<a href="#">MF-MSMF110L-2</a>	<a href="#">MF-MSMF125-2</a>	<a href="#">MF-MSMF150</a>	<a href="#">MF-MSMF150-2</a>	<a href="#">MF-MSMF150/24X-2</a>
<a href="#">MF-MSMF160-2</a>	<a href="#">MF-MSMF160L-2</a>	<a href="#">MF-MSMF200</a>	<a href="#">MF-MSMF200-2</a>	<a href="#">MF-MSMF250/16-2</a>
<a href="#">MF-MSMF250/16X-2</a>	<a href="#">MF-MSMF260-2</a>	<a href="#">MF-MSMF260-2-2.6A</a>	<a href="#">MF-MSMS110-2</a>	<a href="#">MF-NSMF-020-2</a>
<a href="#">MF-NSMF-202-2</a>	<a href="#">MF-NSMF010-2</a>	<a href="#">MF-NSMF012-2</a>	<a href="#">MF-NSMF020-2</a>	<a href="#">MF-NSMF035-2</a>