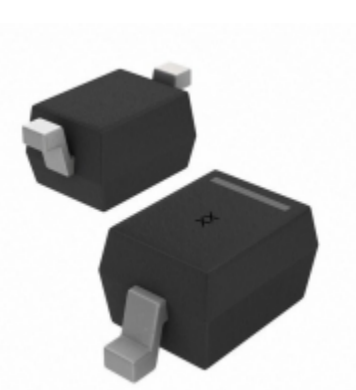


<b>CDSOD323-T24C</b>	
Part Number	<a href="#">CDSOD323-T24C</a>
Manufacturer	<a href="#">Bourns, Inc.</a>
Description	TVS DIODE 24VWM 56VC SOD323
Quantity Available	30000 pcs in stock
Datasheets	
CDSOD323-T24C Price	<a href="#">Request Price &amp; Lead Time Online</a> or Email us: <a href="mailto:Info@ariat-tech.com">Info@ariat-tech.com</a>


[GET A QUOTE](#)

Technical Information of CDSOD323-T24C			
Manufacturer Part Number	<a href="#">CDSOD323-T24C</a>	Category	<a href="#">Circuit Protection</a>
Manufacturer	<a href="#">Bourns, Inc.</a>	Description	TVS DIODE 24VWM 56VC SOD323
Package / Case	Tape & Reel (TR)	Quantity Available	30000
Series	-	Operating Temperature	-55°C ~ 150°C (TJ)
Mounting Type	Surface Mount	Type	Zener
Capacitance @ Frequency	3pF @ 1MHz	Applications	General Purpose
Package / Case	SC-76, SOD-323	Supplier Device Package	SOD-323
Voltage - Reverse Standoff (Typ)	24V	Voltage - Breakdown (Min)	26.7V
Voltage - Clamping (Max) @ Ipp	56V (Typ)	Current - Peak Pulse (10/1000µs)	6A (8/20µs)
Power - Peak Pulse	350W	Power Line Protection	No
Bidirectional Channels	1	Packaging	Tape & Reel (TR)

CDSOD323-T24C 30000pcs New and Original in Stock, Find CDSOD323-T24C Stock, Datasheet, PDF, Inventory at Ariat-Tech.com Online, Order CDSOD323-T24C Bourns, Inc. with warrantied and confidence. RFQ CDSOD323-T24C : [Info@Ariat-Tech.com](mailto:Info@Ariat-Tech.com)

Related parts for CDSOD323-T24C				
Image	Part Number	Description	Manufacturer	Qty
	<a href="#">CDSOD323-T15LC</a>	TVS DIODE 15VWM 31.8VC SMD	Bourns, Inc.	30000 pcs
	<a href="#">CDSOD323-T15S</a>	TVS DIODE 15VWM 30VC SMD	Bourns, Inc.	12500 pcs
	<a href="#">CDSOD323-T24SC</a>	TVS DIODE 24VWM 46.2VC SMD	Bourns, Inc.	6000 pcs
	<a href="#">CDSOD323-T18</a>	TVS DIODE 18VWM 45VC SMD	Bourns, Inc.	500 pcs
	<a href="#">CDSOD323-T36S</a>	CDSOD323-T36S Bourns	Bourns, Inc.	3050 pcs
	<a href="#">CDSOD323-T18LC</a>	TVS DIODE 18VWM 45VC SMD	Bourns, Inc.	12350 pcs
	<a href="#">CDSOD323-T18SC</a>	TVS DIODE 18VWM 40VC SMD	Bourns, Inc.	198000 pcs
	<a href="#">CDSOD323-T24L</a>	TVS DIODE 24VWM 56VC SMD	Bourns, Inc.	12500 pcs
	<a href="#">CDSOD323-T36LC</a>	CDSOD323-T36LC SEMITEH	SEMITEH	30000 pcs
	<a href="#">CDSOD323-T15SC</a>	TVS DIODE 15VWM 33VC SOD323	Bourns, Inc.	14500 pcs
	<a href="#">CDSOD323-T24C-DSL</a>	TVS DIODE 24VWM 56VC SMD	Bourns, Inc.	3000 pcs
	<a href="#">CDSOD323-T18C</a>	TVS DIODE 18VWM 45VC SMD	Bourns, Inc.	1999 pcs
	<a href="#">CDSOD323-T24LC</a>	TVS DIODE 24VWM 56VC SMD	Bourns, Inc.	30000 pcs
	<a href="#">CDSOD323-T18S</a>	TVS DIODE 18VWM 40VC SMD	Bourns, Inc.	3000 pcs
	<a href="#">CDSOD323-T24C-DSLQ</a>	DIO TVS VWM 24V 350W BIDIR SOD32	Bourns, Inc.	500 pcs
	<a href="#">CDSOD323-T36SC</a>	TVS DIODE 36VWM 75VC SOD323	Bourns, Inc.	3050 pcs
	<a href="#">CDSOD323-T18L</a>	TVS DIODE 18VWM 45VC SMD	Bourns, Inc.	19550 pcs
	<a href="#">CDSOD323-T24</a>	TVS DIODE 24VWM 56VC SMD	Bourns, Inc.	3000 pcs
	<a href="#">CDSOD323-T36C</a>	CDSOD323-T36C SEMITEH	SEMITEH	30000 pcs
	<a href="#">CDSOD323-T24S</a>	TVS DIODE 24VWM 49VC SMD	Bourns, Inc.	6000 pcs

**IC Chips & IGBT Module - Hot Stock Part Number**

<a href="#">CDSOD323-T05S</a>	<a href="#">CDSOD323-T05SC</a>	<a href="#">CDSOD323-T08</a>	<a href="#">CDSOD323-T08C</a>	<a href="#">CDSOD323-T08L</a>
<a href="#">CDSOD323-T08LC</a>	<a href="#">CDSOD323-T08S</a>	<a href="#">CDSOD323-T08SC</a>	<a href="#">CDSOD323-T12</a>	<a href="#">CDSOD323-T12C</a>
<a href="#">CDSOD323-T12C-DSL</a>	<a href="#">CDSOD323-T12L</a>	<a href="#">CDSOD323-T12LC</a>	<a href="#">CDSOD323-T12S</a>	<a href="#">CDSOD323-T12SC</a>
<a href="#">CDSOD323-T15</a>	<a href="#">CDSOD323-T15C</a>	<a href="#">CDSOD323-T15LC</a>	<a href="#">CDSOD323-T15S</a>	<a href="#">CDSOD323-T15SC</a>
<a href="#">CDSOD323-T18C</a>	<a href="#">CDSOD323-T18LC</a>	<a href="#">CDSOD323-T18S</a>	<a href="#">CDSOD323-T18SC</a>	<a href="#">CDSOD323-T24</a>
<a href="#">CDSOD323-T24C-DSL</a>	<a href="#">CDSOD323-T24L</a>	<a href="#">CDSOD323-T24LC</a>	<a href="#">CDSOD323-T24S</a>	<a href="#">CDSOD323-T24SC</a>
<a href="#">CDSOD323-T36C</a>	<a href="#">CDSOD323-T36LC</a>	<a href="#">CDSOD323-T36S</a>	<a href="#">CDSOD323-T36SC</a>	<a href="#">CDSOD523-T05</a>
<a href="#">CDSOT23-0502B</a>	<a href="#">CDSOT23-SLVU2.8</a>	<a href="#">CDSOT23-SM712</a>	<a href="#">CDSOT23-SR208</a>	<a href="#">CDSOT23-SR724</a>
<a href="#">CDSOT23-SRV05-4</a>	<a href="#">CDSOT23-T03</a>	<a href="#">CDSOT23-T03C</a>	<a href="#">CDSOT23-T03LC</a>	<a href="#">CDSOT23-T03LC</a>
<a href="#">CDSOT23-T05</a>	<a href="#">CDSOT23-T05C</a>	<a href="#">CDSOT23-T05LC</a>	<a href="#">CDSOT23-T05LC</a>	<a href="#">CDSOT23-T08</a>