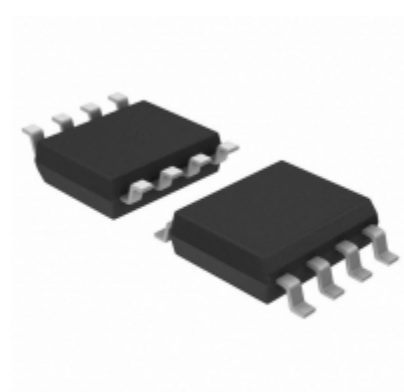


<b>BD63536FJ-E2</b>	
Part Number	<a href="#">BD63536FJ-E2</a>
Manufacturer	<a href="#">LAPIS Semiconductor</a>
Description	IC REG CTRLR BUCK 8SOP
Quantity Available	2370 pcs in stock
Datasheets	<a href="#">BD63536FJ-E2.pdf</a>
BD63536FJ-E2 Price	<a href="#">Request Price &amp; Lead Time Online</a> or Email us: <a href="mailto:Info@ariat-tech.com">Info@ariat-tech.com</a>


[GET A QUOTE](#)

Technical Information of BD63536FJ-E2			
Manufacturer Part Number	<a href="#">BD63536FJ-E2</a>	Category	<a href="#">Integrated Circuits (ICs)</a>
Manufacturer	<a href="#">LAPIS Semiconductor</a>	Description	IC REG CTRLR BUCK 8SOP
Package / Case	Tape & Reel (TR)	Quantity Available	2370
Series	-	Operating Temperature	-25°C ~ 85°C (TA)
Output Type	Transistor Driver	Package / Case	8-SOIC (0.154", 3.90mm Width)
Supplier Device Package	8-SOP-J	Function	Step-Down
Frequency - Switching	Up to 300kHz	Number of Outputs	1
Output Configuration	Positive	Voltage - Supply (Vcc/Vdd)	3 V ~ 30 V
Topology	Buck	Control Features	Current Limit, Frequency Control
Output Phases	1	Duty Cycle (Max)	-
Synchronous Rectifier	No	Clock Sync	No
Serial Interfaces	-	Packaging	Tape & Reel (TR)

BD63536FJ-E2 2370pcs New and Original in Stock, Find BD63536FJ-E2 Stock, Datasheet, PDF, Inventory at Ariat-Tech.com Online, Order BD63536FJ-E2 LAPIS Semiconductor with warrantied and confidence. RFQ BD63536FJ-E2 : [Info@Ariat-Tech.com](mailto:Info@Ariat-Tech.com)

Related parts for BD63536FJ-E2				
Image	Part Number	Description	Manufacturer	Qty
	<a href="#">BD63715AEFV-E2</a>	IC MOTOR DRIVER PAR 28HTSSOP	LAPIS Semiconductor	500 pcs
	<a href="#">BD63674FUT-E2</a>	BD63674FUT-E2 ROHM	LAPIS Semiconductor	897 pcs
	<a href="#">BD63521EFV-E2</a>	MICRO STEP 36V STEPPING MOTOR DR	LAPIS Semiconductor	500 pcs
	<a href="#">BD6369GUL-E2</a>	IC LENS DVR PAR 15VCSP	LAPIS Semiconductor	500 pcs
	<a href="#">BD6370GUL-E2</a>	IC MOTOR DRIVER SER 24-CSP	LAPIS Semiconductor	30000 pcs
	<a href="#">BD63520EFV-E2</a>	IC MOTOR DVR 36V 28HTSSOP	LAPIS Semiconductor	500 pcs
	<a href="#">BD63536FJ-ZE2</a>	BD63536FJ-ZE2 ROHM	LAPIS Semiconductor	2500 pcs
	<a href="#">BD63610AEFV-E2</a>	IC STEP MOTOR DRVR PAR 20HTSSOP	LAPIS Semiconductor	500 pcs
	<a href="#">BD63520AEFV-E2</a>	MICRO STEP 36V STEPPING MOTOR DR	LAPIS Semiconductor	500 pcs
	<a href="#">BD63524EFV-E2</a>	IC MOTOR DVR 36V 28HTSSOP	LAPIS Semiconductor	500 pcs
	<a href="#">BD63441AFU-E2</a>	MULTIFUNCTION THREE-PHASE FULL-W	LAPIS Semiconductor	500 pcs
	<a href="#">BD6360GUL-E2</a>	IC MOTOR DRIVER PAR 15CSP	LAPIS Semiconductor	39000 pcs
	<a href="#">BD63573NUV-E2</a>	SINGLE H-BRIDGE DRIVER HIGH-SPEE	LAPIS Semiconductor	500 pcs
	<a href="#">BD6346FV-E2</a>	THREE-PHASE FULL-WAVE FAN MOTOR	LAPIS Semiconductor	500 pcs
	<a href="#">BD6345FV-E2</a>	IC COMMUTATION DVR 12V 20SSOP	LAPIS Semiconductor	500 pcs
	<a href="#">BD63524AEFV-E2</a>	MICRO STEP 36V STEPPING MOTOR DR	LAPIS Semiconductor	500 pcs
	<a href="#">BD63620AEFV-E2</a>	IC STEP MOTOR DRVR PAR 24HTSSOP	LAPIS Semiconductor	500 pcs
	<a href="#">BD63444FU-E2</a>	BD63444FU-E2 ROHM	LAPIS Semiconductor	23500 pcs
	<a href="#">BD63710AEFV-E2</a>	IC MOTOR DRIVER PAR 28HTSSOP	LAPIS Semiconductor	500 pcs
	<a href="#">BD63510EFV-E2</a>	IC MOTOR DVR 36V 28HTSSOP	LAPIS Semiconductor	500 pcs

#### IC Chips & IGBT Module - Hot Stock Part Number

<a href="#">BD62222HFP-TR</a>	<a href="#">BD6222FP-E2</a>	<a href="#">BD6222HFP</a>	<a href="#">BD6222HFP-TR</a>	<a href="#">BD6230F-E2</a>
<a href="#">BD6230HFP</a>	<a href="#">BD6231HFP</a>	<a href="#">BD62321HFP</a>	<a href="#">BD6232FP</a>	<a href="#">BD6232FP-E2</a>
<a href="#">BD6232HFP</a>	<a href="#">BD6232HFP-LB</a>	<a href="#">BD6232HFP-TR</a>	<a href="#">BD6236FM</a>	<a href="#">BD6236FP</a>
<a href="#">BD6237FM</a>	<a href="#">BD6262FVM-TR</a>	<a href="#">BD63000MUV-GE2</a>	<a href="#">BD63041EFV-E2</a>	<a href="#">BD6308KV</a>
<a href="#">BD6308KV-E2</a>	<a href="#">BD6319FV-GE2</a>	<a href="#">BD63222NUX-E2</a>	<a href="#">BD63440FU-E2</a>	<a href="#">BD63444FU-E2</a>
<a href="#">BD63536FJ-ZE2</a>	<a href="#">BD6360GUL-E2</a>	<a href="#">BD63674FUT-E2</a>	<a href="#">BD6370GUL-E2</a>	<a href="#">BD6375GU-E2</a>
<a href="#">BD6376GUL-E2</a>	<a href="#">BD6380EFV</a>	<a href="#">BD6380EFV-E2</a>	<a href="#">BD6381EFV</a>	<a href="#">BD6384EFV-E2</a>
<a href="#">BD6385EFV-E2</a>	<a href="#">BD63860EFV-E2</a>	<a href="#">BD63876EFV-E2</a>	<a href="#">BD6389FM-E2</a>	<a href="#">BD63962EFV-E2</a>
<a href="#">BD640CS_L2_00001</a>	<a href="#">BD64532EKV</a>	<a href="#">BD64538EFV-E2</a>	<a href="#">BD64550EFV</a>	<a href="#">BD64560EUV-E2</a>
<a href="#">BD645CS_L2_00001</a>	<a href="#">BD6483GUL</a>	<a href="#">BD6483GUL-E2</a>	<a href="#">BD650CS_L2_00001</a>	<a href="#">BD6510F-E2</a>