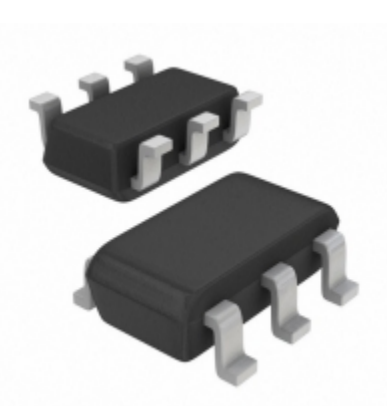


AP1603WG-7	
Part Number	<a href="#">AP1603WG-7</a>
Manufacturer	<a href="#">Diodes Incorporated</a>
Description	IC REG BST ADJ/PROG 0.2A SOT-26
Quantity Available	4995 pcs in stock
Datasheets	
AP1603WG-7 Price	<a href="#">Request Price &amp; Lead Time Online</a> or Email us: <a href="mailto:Info@ariat-tech.com">Info@ariat-tech.com</a>


[GET A QUOTE](#)

Technical Information of AP1603WG-7			
Manufacturer Part Number	<a href="#">AP1603WG-7</a>	Category	<a href="#">Integrated Circuits (ICs)</a>
Manufacturer	<a href="#">Diodes Incorporated</a>	Description	IC REG BST ADJ/PROG 0.2A SOT-26
Package / Case	Tape & Reel (TR)	Quantity Available	4995
Series	-	Operating Temperature	-40°C ~ 85°C (TA)
Mounting Type	Surface Mount	Voltage - Input (Max)	5.5V
Output Type	Adjustable (Programmable)	Package / Case	SOT-23-6
Supplier Device Package	SOT-26	Function	Step-Up
Current - Output	200mA (Switch)	Frequency - Switching	150kHz
Number of Outputs	1	Output Configuration	Positive
Topology	Boost	Voltage - Output (Min/Fixed)	2V (3.3V, 5V)
Voltage - Output (Max)	5.8V (Switch)	Synchronous Rectifier	No
Voltage - Input (Min)	1.1V	Packaging	Tape & Reel (TR)

AP1603WG-7 4995pcs New and Original in Stock, Find AP1603WG-7 Stock, Datasheet, PDF, Inventory at Ariat-Tech.com Online, Order AP1603WG-7 Diodes Incorporated with warrantied and confidence. RFQ AP1603WG-7 : [Info@Ariat-Tech.com](mailto:Info@Ariat-Tech.com)

Related parts for AP1603WG-7				
Image	Part Number	Description	Manufacturer	Qty
	<a href="#">AP1603WA</a>	AP1603WA ANACHIPDI	ANACHIPDI	1242 pcs
	<a href="#">AP1601M10G-13</a>	IC REG BOOST ADJ 1.5A 10MSOP	Diodes Incorporated	2352 pcs
	<a href="#">AP1602BYL-7</a>	IC REG BOOST 3.3V 0.8A SOT89-5L	Diodes Incorporated	500 pcs
	<a href="#">AP1604AWL-7</a>	IC REG BUCK ADJ 0.8A SOT25	Diodes Incorporated	30000 pcs
	<a href="#">AP1605</a>	AP1605 DIODES	Digital View Inc.	620 pcs
	<a href="#">AP1605SG-13</a>	IC REG BUCK ADJ 3A 8SO	Diodes Incorporated	6105 pcs
	<a href="#">AP1601M8G-13</a>	IC REG BOOST ADJ 1.5A 8MSOP	Diodes Incorporated	443 pcs
	<a href="#">AP1604AWG-7</a>	IC REG BUCK ADJ 0.8A SOT25	Diodes Incorporated	9000 pcs
	<a href="#">AP1604ASN</a>	AP1604ASN DIODES	Digital View Inc.	7586 pcs
	<a href="#">AP1605SL</a>	AP1605SL DIODES	Digital View Inc.	490 pcs
	<a href="#">AP1601M8A</a>	AP1601M8A ANACHIP	ANACHIP	2220 pcs
	<a href="#">AP1602BYLA</a>	AP1602BYLA DIODES	Digital View Inc.	9000 pcs
	<a href="#">AP1603WA-7</a>	AP1603WA-7 DIODES	Digital View Inc.	9000 pcs
	<a href="#">AP1604ASNA</a>	AP1604ASNA DIODES	Digital View Inc.	5000 pcs
	<a href="#">AP1601M10LA</a>	AP1601M10LA ANACHIP	ANACHIP	2500 pcs
	<a href="#">AP1601M8LA</a>	AP1601M8LA DIODES/ANACHIP	DIODES/ANACHIP	2220 pcs
	<a href="#">AP1604AWA</a>	AP1604AWA Original	Original	120000 pcs
	<a href="#">AP1605SA</a>	AP1605SA DIODES	Digital View Inc.	189 pcs
	<a href="#">AP1603WL-7</a>	IC REG BOOST ADJ/PROG 0.2A SOT26	Diodes Incorporated	9000 pcs
	<a href="#">AP1602AYL-7</a>	IC REG BOOST 3.3V 0.8A SOT89-5L	Diodes Incorporated	500 pcs

**IC Chips & IGBT Module - Hot Stock Part Number**

<a href="#">AP1539SDPG-13</a>	<a href="#">AP1551SL-13</a>	<a href="#">AP1551SLA</a>	<a href="#">AP1582UC-TRL</a>	<a href="#">AP15N03GH</a>
<a href="#">AP15N03GH-HF</a>	<a href="#">AP15N03GJ</a>	<a href="#">AP15N03H</a>	<a href="#">AP15P10GH</a>	<a href="#">AP15P10GH-HF</a>
<a href="#">AP15P10GP</a>	<a href="#">AP15P10GP-HF</a>	<a href="#">AP15P10GS-HF</a>	<a href="#">AP15P15GP-HF</a>	<a href="#">AP15T03H</a>
<a href="#">AP15T15GM</a>	<a href="#">AP15T15GM-HF</a>	<a href="#">AP15TN1R5N-HF</a>	<a href="#">AP1601M10G-13</a>	<a href="#">AP1601M10LA</a>
<a href="#">AP1601M8A</a>	<a href="#">AP1601M8LA</a>	<a href="#">AP1602BYLA</a>	<a href="#">AP1603WA</a>	<a href="#">AP1603WA-7</a>
<a href="#">AP1603WL-7</a>	<a href="#">AP1604ASN</a>	<a href="#">AP1604ASNA</a>	<a href="#">AP1604AWA</a>	<a href="#">AP1604AWG-7</a>
<a href="#">AP1604AWL-7</a>	<a href="#">AP1605SG-13</a>	<a href="#">AP1605SL-13</a>	<a href="#">AP1605SLA</a>	<a href="#">AP1605TSLA</a>
<a href="#">AP1609SG-13</a>	<a href="#">AP1609TSA</a>	<a href="#">AP1610ES5-HFKP</a>	<a href="#">AP1610ES5-HFKR</a>	<a href="#">AP1610ES5-HFKRG</a>
<a href="#">AP1610ES5-LFKR</a>	<a href="#">AP1621AWA</a>	<a href="#">AP1621BHKTBER</a>	<a href="#">AP1621CHTBER</a>	<a href="#">AP1621DHKTBER</a>
<a href="#">AP1621DHTBER</a>	<a href="#">AP1624WA</a>	<a href="#">AP1627MA</a>	<a href="#">AP163-317</a>	<a href="#">AP163-317LF</a>

Electronics Components Distributor – IC Chips &amp; IGBT Module Supplier.

 RFQ Email: [Info@ariat-tech.com](mailto:Info@ariat-tech.com) Website: <https://www.ariat-tech.com>

Copyright Notice © 1996-2019 ARIAT TECHNOLOGY LIMITED. All rights reserved.