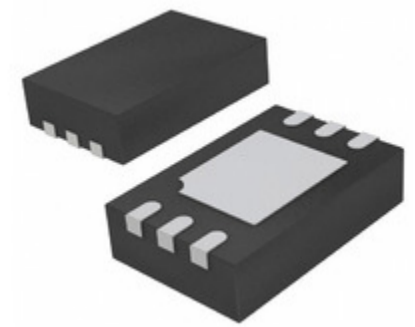


<b>LTC4357CDCB#TRPBF</b>	
Part Number	<a href="#">LTC4357CDCB#TRPBF</a>
Manufacturer	ADI (Analog Devices, Inc.)
Description	IC OR CTRLR N+1 6DFN
Quantity Available	500 pcs in stock
Datasheets	<a href="#">LTC4357CDCB#TRPBF.pdf</a>
LTC4357CDCB#TRPBF Price	<a href="#">Request Price &amp; Lead Time Online</a> or Email us: <a href="mailto:Info@ariat-tech.com">Info@ariat-tech.com</a>


[GET A QUOTE](#)

Technical Information of LTC4357CDCB#TRPBF			
Manufacturer Part Number	<a href="#">LTC4357CDCB#TRPBF</a>	Category	<a href="#">Integrated Circuits (ICs)</a>
Manufacturer	ADI (Analog Devices, Inc.)	Description	IC OR CTRLR N+1 6DFN
Package / Case	Tape & Reel (TR)	Quantity Available	500
Voltage - Supply	9 V ~ 80 V	Type	N+1 ORing Controller
Supplier Device Package	6-DFN (2x3)	Series	-
Ratio - Input:Output	N:1	Packaging	Tape & Reel (TR)
Package / Case	6-WDFN Exposed Pad	Operating Temperature	0°C ~ 70°C
Mounting Type	Surface Mount	Moisture Sensitivity Level (MSL)	1 (Unlimited)
Manufacturer Standard Lead Time	10 Weeks	Lead Free Status / RoHS Status	Lead free / RoHS Compliant
Internal Switch(s)	No	FET Type	N-Channel
Detailed Description	OR Controller N+1 ORing Controller N-Channel N:1 6-DFN (2x3)	Delay Time - OFF	300ns
Current - Supply	500µA	Current - Output (Max)	-
Base Part Number	LTC4357	Applications	Automotive, Redundant Power Supplies, Telecom Infrastructure

LTC4357CDCB#TRPBF 500pcs New and Original in Stock, Find LTC4357CDCB#TRPBF Stock, Datasheet, PDF, Inventory at Ariat-Tech.com Online, Order LTC4357CDCB#TRPBF with warrantied and confidence. RFQ LTC4357CDCB#TRPBF : [Info@Ariat-Tech.com](mailto:Info@Ariat-Tech.com)

Related parts for LTC4357CDCB#TRPBF				
Image	Part Number	Description	Manufacturer	Quantity
	<a href="#">LTC4355IDE#PBF</a>	IC OR CTRLR SRC SELECT 14DFN	ADI (Analog Devices, Inc.)	158 pcs
	<a href="#">LTC4357IDCB#TRMPBF</a>	IC OR CTRLR N+1 6DFN	ADI (Analog Devices, Inc.)	500 pcs
	<a href="#">LTC4357IDCB#TRPBF</a>	IC OR CTRLR N+1 6DFN	ADI (Analog Devices, Inc.)	3500 pcs
	<a href="#">LTC4357HMS8#TRPBF</a>	IC OR CTRLR N+1 8MSOP	ADI (Analog Devices, Inc.)	72 pcs
	<a href="#">LTC4355IMS#TRPBF</a>	IC OR CTRLR SRC SELECT 16MSOP	ADI (Analog Devices, Inc.)	500 pcs
	<a href="#">LTC4356IDE-1</a>	LTC4356IDE-1 LINEAR	LINEAR	35 pcs
	<a href="#">LTC4357CMS8#PBF</a>	IC OR CTRLR N+1 8MSOP	ADI (Analog Devices, Inc.)	89 pcs
	<a href="#">LTC4357HMS8#PBF</a>	IC OR CTRLR N+1 8MSOP	ADI (Analog Devices, Inc.)	2 pcs
	<a href="#">LTC4355IS</a>	LTC4355IS LT	LT	2 pcs
	<a href="#">LTC4355IS#TRPBF</a>	IC OR CTRLR SRC SELECT 16SOIC	ADI (Analog Devices, Inc.)	166 pcs
	<a href="#">LTC4357CMS8#TRPBF</a>	IC OR CTRLR N+1 8MSOP	ADI (Analog Devices, Inc.)	72 pcs
	<a href="#">LTC4355IMS#PBF</a>	IC OR CTRLR SRC SELECT 16MSOP	ADI (Analog Devices, Inc.)	93 pcs
	<a href="#">LTC4357HDCB#TRMPBF</a>	IC OR CTRLR N+1 6DFN	ADI (Analog Devices, Inc.)	500 pcs
	<a href="#">LTC4357CMS8</a>	LTC4357CMS8 LT	LT	450 pcs
	<a href="#">LTC4355IS#PBF</a>	IC OR CTRLR SRC SELECT 16SOIC	ADI (Analog Devices, Inc.)	78 pcs
	<a href="#">LTC4357CDCB#TRMPBF</a>	IC OR CTRLR N+1 6DFN	ADI (Analog Devices, Inc.)	500 pcs
	<a href="#">LTC4357HDCB#TRPBF</a>	IC OR CTRLR N+1 6DFN	ADI (Analog Devices, Inc.)	500 pcs
	<a href="#">LTC4355IDE#TRPBF</a>	IC OR CTRLR SRC SELECT 14DFN	ADI (Analog Devices, Inc.)	1068 pcs
	<a href="#">LTC4357IMS8#PBF</a>	IC OR CTRLR N+1 8MSOP	ADI (Analog Devices, Inc.)	2 pcs
	<a href="#">LTC4356IGN-1</a>	LTC4356IGN-1 LT	LT	92 pcs

<a href="#">LTC4357CDCB#TRPBF Stock</a>	<a href="#">LTC4357CDCB#TRPBF Price</a>	<a href="#">LTC4357CDCB#TRPBF Electronics</a>	<a href="#">LTC4357CDCB#TRPBF Components</a>
<a href="#">LTC4357CDCB#TRPBF Inventory</a>	<a href="#">LTC4357CDCB#TRPBF Digikey</a>	<a href="#">Supplier LTC4357CDCB#TRPBF</a>	<a href="#">Order LTC4357CDCB#TRPBF Online</a>
<a href="#">Inquiry LTC4357CDCB#TRPBF</a>	<a href="#">LTC4357CDCB#TRPBF Image</a>	<a href="#">LTC4357CDCB#TRPBF Picture</a>	<a href="#">LTC4357CDCB#TRPBF PDF</a>
<a href="#">LTC4357CDCB#TRPBF Datasheet</a>	<a href="#">Download LTC4357CDCB#TRPBF Datasheet</a>	<a href="#">Manufacturer</a>	