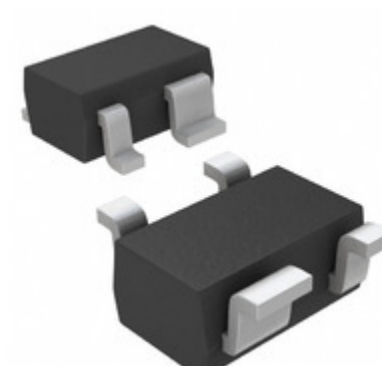


MAX6388XS19D6-T	
Part Number	<a href="#">MAX6388XS19D6-T</a>
Manufacturer	<a href="#">Maxim Integrated</a>
Description	IC MPU/RESET CIRC 1.90V SC70-4
Quantity Available	500 pcs in stock
Datasheets	<a href="#">MAX6388XS19D6-T.pdf</a>
MAX6388XS19D6-T Price	<a href="#">Request Price &amp; Lead Time Online</a> or Email us: <a href="mailto:Info@ariat-tech.com">Info@ariat-tech.com</a>


[GET A QUOTE](#)

Technical Information of MAX6388XS19D6-T			
Manufacturer Part Number	<a href="#">MAX6388XS19D6-T</a>	Category	<a href="#">Integrated Circuits (ICs)</a>
Manufacturer	<a href="#">Maxim Integrated</a>	Description	IC MPU/RESET CIRC 1.90V SC70-4
Package / Case	Tape & Reel (TR)	Quantity Available	500
Voltage - Threshold	1.9V, Adj	Type	Multi-Voltage Supervisor
Supplier Device Package	SC-70-4	Series	-
Reset Timeout	560 ms Minimum	Reset	Active High
Packaging	Tape & Reel (TR)	Package / Case	SC-82A, SOT-343
Output	Push-Pull, Totem Pole	Operating Temperature	-40°C ~ 125°C (TA)
Number of Voltages Monitored	2	Mounting Type	Surface Mount

MAX6388XS19D6-T 500pcs New and Original in Stock, Find MAX6388XS19D6-T Stock, Datasheet, PDF, Inventory at Ariat-Tech.com Online, Order MAX6388XS19D6-T Maxim Integrated with warrantied and confidence. RFQ MAX6388XS19D6-T : [Info@Ariat-Tech.com](mailto:Info@Ariat-Tech.com)

Related parts for MAX6388XS19D6-T				
Image	Part Number	Description	Manufacturer	Quantity
	<a href="#">MAX6388XS20D7-T</a>	IC MPU/RESET CIRC 2.00V SC70-4	Maxim Integrated	500 pcs
	<a href="#">MAX6388XS20D1-T</a>	IC MPU/RESET CIRC 2.00V SC70-4	Maxim Integrated	500 pcs
	<a href="#">MAX6388XS20D2-T</a>	IC MPU/RESET CIRC 2.00V SC70-4	Maxim Integrated	500 pcs
	<a href="#">MAX6388XS19D5-T</a>	IC MPU/RESET CIRC 1.90V SC70-4	Maxim Integrated	500 pcs
	<a href="#">MAX6388XS20D3-T</a>	IC MPU/RESET CIRC 2.00V SC70-4	Maxim Integrated	500 pcs
	<a href="#">MAX6388XS21D1-T</a>	IC MPU/RESET CIRC 2.10V SC70-4	Maxim Integrated	500 pcs
	<a href="#">MAX6388XS19D2-T</a>	IC MPU/RESET CIRC 1.90V SC70-4	Maxim Integrated	500 pcs
	<a href="#">MAX6388XS19D3-T</a>	IC MPU/RESET CIRC 1.90V SC70-4	Maxim Integrated	500 pcs
	<a href="#">MAX6388XS18D7-T</a>	IC MPU/RESET CIRC 1.80V SC70-4	Maxim Integrated	500 pcs
	<a href="#">MAX6388XS18D3-T</a>	IC MPU/RESET CIRC 1.80V SC70-4	Maxim Integrated	500 pcs
	<a href="#">MAX6388XS20D5-T</a>	IC MPU/RESET CIRC 2.00V SC70-4	Maxim Integrated	500 pcs
	<a href="#">MAX6388XS19D1-T</a>	IC MPU/RESET CIRC 1.90V SC70-4	Maxim Integrated	500 pcs
	<a href="#">MAX6388XS20D6-T</a>	IC MPU/RESET CIRC 2.00V SC70-4	Maxim Integrated	500 pcs
	<a href="#">MAX6388XS20D4-T</a>	IC MPU/RESET CIRC 2.00V SC70-4	Maxim Integrated	500 pcs
	<a href="#">MAX6388XS18D5-T</a>	IC MPU/RESET CIRC 1.80V SC70-4	Maxim Integrated	500 pcs
	<a href="#">MAX6388XS18D4-T</a>	IC MPU/RESET CIRC 1.80V SC70-4	Maxim Integrated	500 pcs
	<a href="#">MAX6388XS19D7-T</a>	IC MPU/RESET CIRC 1.90V SC70-4	Maxim Integrated	500 pcs
	<a href="#">MAX6388XS21D2-T</a>	IC MPU/RESET CIRC 2.10V SC70-4	Maxim Integrated	500 pcs
	<a href="#">MAX6388XS18D6-T</a>	IC MPU/RESET CIRC 1.80V SC70-4	Maxim Integrated	500 pcs
	<a href="#">MAX6388XS19D4-T</a>	IC MPU/RESET CIRC 1.90V SC70-4	Maxim Integrated	500 pcs

<a href="#">MAX6388XS19D6-T Stock</a>	<a href="#">MAX6388XS19D6-T Price</a>	<a href="#">MAX6388XS19D6-T Electronics</a>	<a href="#">MAX6388XS19D6-T Components</a>
<a href="#">MAX6388XS19D6-T Inventory</a>	<a href="#">MAX6388XS19D6-T Digikey</a>	<a href="#">Supplier MAX6388XS19D6-T</a>	<a href="#">Order MAX6388XS19D6-T Online</a>
<a href="#">Inquiry MAX6388XS19D6-T</a>	<a href="#">MAX6388XS19D6-T Image</a>	<a href="#">MAX6388XS19D6-T Picture</a>	<a href="#">MAX6388XS19D6-T PDF</a>
<a href="#">MAX6388XS19D6-T Datasheet</a>	<a href="#">Download MAX6388XS19D6-T Datasheet</a>	<a href="#">Manufacturer Maxim Integrated</a>	