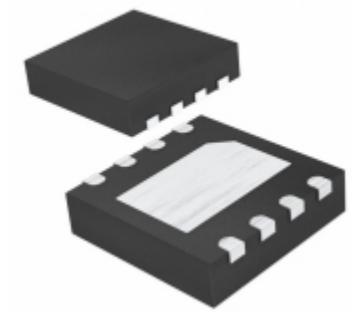


<b>MAX8596XETA+</b>	
Part Number	<a href="#">MAX8596XETA+</a>
Manufacturer	<a href="#">Maxim Integrated</a>
Description	IC LED DRVR RGLTR DIM 25MA 8TDFN
Quantity Available	2810 pcs in stock
Datasheets	<a href="#">MAX8596XETA+.pdf</a>
MAX8596XETA+ Price	<a href="#">Request Price &amp; Lead Time Online</a> or Email us: <a href="mailto:Info@ariat-tech.com">Info@ariat-tech.com</a>


[GET A QUOTE](#)

Technical Information of MAX8596XETA+			
Manufacturer Part Number	<a href="#">MAX8596XETA+</a>	Category	<a href="#">Integrated Circuits (ICs)</a>
Manufacturer	<a href="#">Maxim Integrated</a>	Description	IC LED DRVR RGLTR DIM 25MA 8TDFN
Package / Case	Cut Strip	Quantity Available	2810
Series	-	Frequency	1MHz
Operating Temperature	-40°C ~ 85°C (TA)	Mounting Type	Surface Mount
Type	DC DC Regulator	Applications	Backlight
Package / Case	8-WDFN Exposed Pad	Supplier Device Package	8-TDFN-EP (3x3)
Internal Switch(s)	Yes	Voltage - Output	36V
Current - Output / Channel	25mA	Number of Outputs	1
Topology	Step-Up (Boost)	Voltage - Supply (Max)	6V
Voltage - Supply (Min)	2.6V	Dimming	Analog, PWM
Packaging	Cut Strip		

MAX8596XETA+ 2810pcs New and Original in Stock, Find MAX8596XETA+ Stock, Datasheet, PDF, Inventory at Ariat-Tech.com Online, Order MAX8596XETA+ Maxim Integrated with warrantied and confidence. RFQ MAX8596XETA+ : [Info@Ariat-Tech.com](mailto:Info@Ariat-Tech.com)

Related parts for MAX8596XETA+				
Image	Part Number	Description	Manufacturer	Qty
	<a href="#">MAX8595XETA</a>	MAX8595XETA MAXIM	MAXIM	70 pcs
	<a href="#">MAX8595ZETA</a>	MAX8595ZETA MAXIM	MAXIM	18 pcs
	<a href="#">MAX8597ETP+T</a>	IC REG CTRLR BUCK 20-TQFN	Maxim Integrated	500 pcs
	<a href="#">MAX8595ZETA+</a>	MAX8595ZETA+ MAXIM	MAXIM	5000 pcs
	<a href="#">MAX8598ETE</a>	MAX8598ETE MAXIM	MAXIM	187 pcs
	<a href="#">MAX8599ETE+</a>	IC REG CTRLR BUCK 16TQFN	Maxim Integrated	500 pcs
	<a href="#">MAX8595ZETA+TG51</a>	MAX8595ZETA+TG51 MAXIMPb-f	MAXIMPb-f	2300 pcs
	<a href="#">MAX8595XETA+T</a>	IC LED DRVR RGLTR DIM 25MA 8TDFN	Maxim Integrated	32500 pcs
	<a href="#">MAX8595ZETA+T</a>	IC LED DRVR RGLTR DIM 25MA 8TDFN	Maxim Integrated	2440 pcs
	<a href="#">MAX8595XETA+</a>	IC LED DRVR RGLTR DIM 25MA 8TDFN	Maxim Integrated	17500 pcs
	<a href="#">MAX8595XTA</a>	MAX8595XTA MAXIM	MAXIM	670 pcs
	<a href="#">MAX8595YETA+T</a>	IC LED DRVR RGLTR DIM 25MA 8TDFN	Maxim Integrated	500 pcs
	<a href="#">MAX8596ZETA+T</a>	IC LED DRVR RGLTR DIM 25MA 8TDFN	Maxim Integrated	464 pcs
	<a href="#">MAX8598ETE+</a>	IC REG CTRLR BUCK 16TQFN	Maxim Integrated	500 pcs
	<a href="#">MAX8597ETP+</a>	IC REG CTRLR BUCK 20-TQFN	Maxim Integrated	500 pcs
	<a href="#">MAX8598ETE+T</a>	IC REG CTRLR BUCK 16TQFN	Maxim Integrated	2 pcs
	<a href="#">MAX8596ZETA+</a>	IC LED DRVR RGLTR DIM 25MA 8TDFN	Maxim Integrated	762 pcs
	<a href="#">MAX8596XETA+T</a>	IC LED DRVR RGLTR DIM 25MA 8TDFN	Maxim Integrated	2687 pcs
	<a href="#">MAX8596ZETA</a>	MAX8596ZETA MAXIM	MAXIM	70 pcs
	<a href="#">MAX8595XETA+TG50</a>	MAX8595XETA+TG50 MAX	MAX	105 pcs

**IC Chips & IGBT Module - Hot Stock Part Number**

<a href="#">MAX8577EUB+T</a>	<a href="#">MAX8578EUB+</a>	<a href="#">MAX8578EUB+T</a>	<a href="#">MAX8579EUB+T</a>	<a href="#">MAX857CSA</a>
<a href="#">MAX857CSA+T</a>	<a href="#">MAX857CUA</a>	<a href="#">MAX857ESA</a>	<a href="#">MAX857ESA+T</a>	<a href="#">MAX8581ETB+</a>
<a href="#">MAX8585EUA+</a>	<a href="#">MAX8585EUA+T</a>	<a href="#">MAX8585EUA+TG05</a>	<a href="#">MAX8586ETA</a>	<a href="#">MAX8586ETA+</a>
<a href="#">MAX8586ETA+T</a>	<a href="#">MAX8588ETM+</a>	<a href="#">MAX858ESA</a>	<a href="#">MAX8595ETA+</a>	<a href="#">MAX8595XETA+</a>
<a href="#">MAX8595XETA+T</a>	<a href="#">MAX8595XTA</a>	<a href="#">MAX8595ZETA+</a>	<a href="#">MAX8595ZETA+T</a>	<a href="#">MAX8595ZETA+TG51</a>
<a href="#">MAX8596ZETA+</a>	<a href="#">MAX859CSA</a>	<a href="#">MAX859ESA+T</a>	<a href="#">MAX859ESA</a>	<a href="#">MAX859ESA+T</a>
<a href="#">MAX8600AETD+T</a>	<a href="#">MAX8601ETD+T</a>	<a href="#">MAX8606ETD+T</a>	<a href="#">MAX8607ETD+</a>	<a href="#">MAX8607ETD+T</a>
<a href="#">MAX860CSA</a>	<a href="#">MAX860CSA+T</a>	<a href="#">MAX860ESA</a>	<a href="#">MAX860ESA+</a>	<a href="#">MAX860ESA+T</a>
<a href="#">MAX860ISA</a>	<a href="#">MAX860ISA+T</a>	<a href="#">MAX860IUA</a>	<a href="#">MAX860IUA+</a>	<a href="#">MAX860IUA+T</a>
<a href="#">MAX860IUA-T</a>	<a href="#">MAX8610ETM+</a>	<a href="#">MAX8610ETM+T</a>	<a href="#">MAX8611ETM+</a>	<a href="#">MAX8611ETM+T</a>