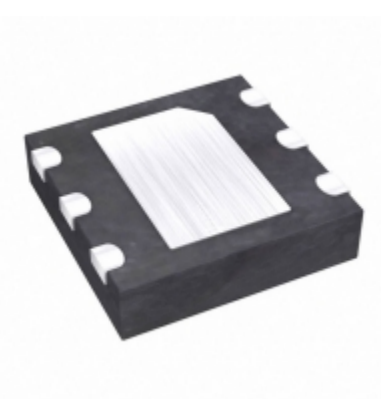


<b>MAX4772ETT+T</b>	
Part Number	<a href="#">MAX4772ETT+T</a>
Manufacturer	<a href="#">Maxim Integrated</a>
Description	IC SWITCH 1X1 6TDFN
Quantity Available	15690 pcs in stock
Datasheets	<a href="#">MAX4772ETT+T.pdf</a>
MAX4772ETT+T Price	<a href="#">Request Price &amp; Lead Time Online</a> or Email us: <a href="mailto:Info@ariat-tech.com">Info@ariat-tech.com</a>


[GET A QUOTE](#)

Technical Information of MAX4772ETT+T			
Manufacturer Part Number	<a href="#">MAX4772ETT+T</a>	Category	<a href="#">Integrated Circuits (ICs)</a>
Manufacturer	<a href="#">Maxim Integrated</a>	Description	IC SWITCH 1X1 6TDFN
Package / Case	Tape & Reel (TR)	Quantity Available	15690
Series	-	Operating Temperature	-40°C ~ 85°C
Mounting Type	Surface Mount	Voltage - Input	2 V ~ 4.5 V
Package / Case	6-WDFN Exposed Pad	Supplier Device Package	6-TDFN-EP (3x3)
Function	Current Limiting	Current - Output	500mA
Sensing Method	-	Accuracy	-
Packaging	Tape & Reel (TR)		

MAX4772ETT+T 15690pcs New and Original in Stock, Find MAX4772ETT+T Stock, Datasheet, PDF, Inventory at Ariat-Tech.com Online, Order MAX4772ETT+T Maxim Integrated with warrantied and confidence. RFQ MAX4772ETT+T : [Info@Ariat-Tech.com](mailto:Info@Ariat-Tech.com)

**Related parts for MAX4772ETT+T**

Image	Part Number	Description	Manufacturer	Qty
	<a href="#">MAX4772ETT+TG40</a>	MAX4772ETT+TG40 MAXIM	MAXIM	2500 pcs
	<a href="#">MAX4772EUT+T</a>	IC SWITCH 1X1 SOT23-6	Maxim Integrated	415 pcs
	<a href="#">MAX4780ETE+T</a>	IC MULTIPLEXER QUAD 2X1 16TQFN	Maxim Integrated	1700 pcs
	<a href="#">MAX4764EUB</a>	MAX4764EUB MAXIM	MAXIM	250 pcs
	<a href="#">MAX476CSA</a>	MAX476CSA MAXIM	MAXIM	231 pcs
	<a href="#">MAX477ESA+</a>	MAX477ESA+ Maxim	MAXIM	37 pcs
	<a href="#">MAX4766CETA+</a>	MAX4766CETA+ MAXIM	MAXIM	3000 pcs
	<a href="#">MAX4764TB</a>	MAX4764TB MAX	MAX	1300 pcs
	<a href="#">MAX477ESA</a>	MAX477ESA MAXIM	MAXIM	4782 pcs
	<a href="#">MAX477EUK+T</a>	MAX477EUK+T MAXIM	MAXIM	200 pcs
	<a href="#">MAX477EPA</a>	MAX477EPA MAXIM	MAXIM	3 pcs
	<a href="#">MAX4764EUB+T</a>	IC SWITCH DUAL SPDT 10UMAX	Maxim Integrated	2000 pcs
	<a href="#">MAX4766CETA+T</a>	IC SWITCH 1X1 8TDFN	Maxim Integrated	2005 pcs
	<a href="#">MAX4765EBC+TG05</a>	MAX4765EBC+TG05 MAX	MAX	30000 pcs
	<a href="#">MAX4780ETE+</a>	IC MULTIPLEXER QUAD 2X1 16TQFN	Maxim Integrated	500 pcs
	<a href="#">MAX4773EUT+T</a>	IC SWITCH 1X1 SOT23-6	Maxim Integrated	6 pcs
	<a href="#">MAX4766CETA+TG126</a>	MAX4766CETA+TG126 MAXIM	MAXIM	19402 pcs
	<a href="#">MAX4772EUT-T</a>	MAX4772EUT-T MAXIM	MAXIM	7500 pcs
	<a href="#">MAX4765EBC+T</a>	MAX4765EBC+T MAXIM	MAXIM	5000 pcs
	<a href="#">MAX4764EUB+</a>	IC SWITCH DUAL SPDT 10UMAX	Maxim Integrated	10340 pcs

**IC Chips & IGBT Module - Hot Stock Part Number**

<a href="#">MAX4751EUD+</a>	<a href="#">MAX4751EUD+T</a>	<a href="#">MAX4754ETE</a>	<a href="#">MAX4754ETE+</a>	<a href="#">MAX4754ETE+T</a>
<a href="#">MAX475CPD</a>	<a href="#">MAX475CSD+T</a>	<a href="#">MAX4760AEBX+T</a>	<a href="#">MAX4760ETX+T</a>	<a href="#">MAX4761EWX+T</a>
<a href="#">MAX4762EBC+T</a>	<a href="#">MAX4762ETB</a>	<a href="#">MAX4762ETB+</a>	<a href="#">MAX4762ETB+T</a>	<a href="#">MAX4764EBC</a>
<a href="#">MAX4764EBC+T</a>	<a href="#">MAX4764ETB+</a>	<a href="#">MAX4764ETB+T</a>	<a href="#">MAX4764EUB+</a>	<a href="#">MAX4764EUB+T</a>
<a href="#">MAX4764TB</a>	<a href="#">MAX4765EBC+T</a>	<a href="#">MAX4765EBC+TG05</a>	<a href="#">MAX4766CETA+</a>	<a href="#">MAX4766CETA+TG126</a>
<a href="#">MAX4772ETT+TG40</a>	<a href="#">MAX4772EUT-T</a>	<a href="#">MAX477ESA</a>	<a href="#">MAX4780ETE+T</a>	<a href="#">MAX4781ETE+</a>
<a href="#">MAX4781EUE+T</a>	<a href="#">MAX4784EUE</a>	<a href="#">MAX4785EXK+T</a>	<a href="#">MAX4786EXS+T</a>	<a href="#">MAX4787EXK+T</a>
<a href="#">MAX4787EXK-T</a>	<a href="#">MAX4788ELT+</a>	<a href="#">MAX4788EXS+T</a>	<a href="#">MAX4789EUK+</a>	<a href="#">MAX4789EUK+T</a>
<a href="#">MAX478CSA</a>	<a href="#">MAX478CSA+T</a>	<a href="#">MAX478CSA-T</a>	<a href="#">MAX478ESA</a>	<a href="#">MAX478ESA+T</a>
<a href="#">MAX4790EUK+T</a>	<a href="#">MAX4790EUS+T</a>	<a href="#">MAX4791EUK+T</a>	<a href="#">MAX4791EUK-T</a>	<a href="#">MAX4792EUS+T</a>

Electronics Components Distributor – IC Chips & IGBT Module Supplier.

RFQ Email: [Info@ariat-tech.com](mailto:Info@ariat-tech.com) Website: <https://www.ariat-tech.com>

Copyright Notice © 1996-2019 ARIAT TECHNOLOGY LIMITED. All rights reserved.