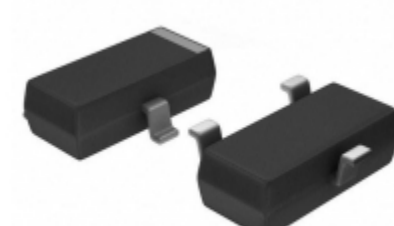


|                          |   |
|--------------------------|---|
| <b>ADM809ZARTZ-REEL7</b> |   |
| Part Number              | <a href="#">ADM809ZARTZ-REEL7</a>   |
| Manufacturer             | ADI (Analog Devices, Inc.)  |
| Description              | IC SUPERVISOR MPU 2.32V SOT23   |
| Quantity Available       | 3799 pcs in stock   |
| Datasheets               | <a href="#">ADM809ZARTZ-REEL7.pdf</a>   |
| ADM809ZARTZ-REEL7 Price  | <a href="#">Request Price &amp; Lead Time Online</a><br>or Email us: <a href="mailto:Info@ariat-tech.com">Info@ariat-tech.com</a> |


[GET A QUOTE](#)

| Technical Information of ADM809ZARTZ-REEL7 |   |                                  |   |
|--|---|----------------------------------|---|
| Manufacturer Part Number                   | <a href="#">ADM809ZARTZ-REEL7</a>                   | Category                         | <a href="#">Integrated Circuits (ICs)</a> |
| Manufacturer                               | ADI (Analog Devices, Inc.)                          | Description                      | IC SUPERVISOR MPU 2.32V SOT23             |
| Package / Case                             | Digi-Reel®  | Quantity Available               | 3799                                      |
| Voltage - Threshold                        | 2.32V   | Type                             | Simple Reset/Power-On Reset               |
| Supplier Device Package                    | SOT-23-3  | Series                           | -   |
| Reset Timeout                              | 140 ms Minimum                                      | Reset                            | Active Low                                |
| Packaging                                  | Original-Reel®                                      | Package / Case                   | TO-236-3, SC-59, SOT-23-3                 |
| Output                                     | Push-Pull, Totem Pole                               | Other Names                      | ADM809ZARTZ-REEL7DKR                      |
| Operating Temperature                      | -40°C ~ 125°C (TA)                                  | Number of Voltages Monitored     | 1   |
| Mounting Type                              | Surface Mount                                       | Moisture Sensitivity Level (MSL) | 1 (Unlimited)                             |
| Manufacturer Standard Lead Time            | 7 Weeks   | Lead Free Status / RoHS Status   | Lead free / RoHS Compliant                |
| Detailed Description                       | Supervisor Push-Pull, Totem Pole 1 Channel SOT-23-3 | Base Part Number                 | ADM809                                    |

ADM809ZARTZ-REEL7 3799pcs New and Original in Stock, Find ADM809ZARTZ-REEL7 Stock, Datasheet, PDF, Inventory at Ariat-Tech.com Online, Order ADM809ZARTZ-REEL7 with warrantied and confidence. RFQ ADM809ZARTZ-REEL7 : [Info@Ariat-Tech.com](mailto:Info@Ariat-Tech.com)

| Related parts for ADM809ZARTZ-REEL7 |                                   |                                   |                            |          |
|-------------------------------------|-----------------------------------|-----------------------------------|----------------------------|----------|
| Image                               | Part Number                       | Description                       | Manufacturer               | Quantity |
|                                     | <a href="#">ADM809ZARTZ</a>       | ADM809ZARTZ AD                    | AD                         | 120 pcs  |
|                                     | <a href="#">ADM809ZAKSZ-REEL</a>  | IC SUPERVISOR MPU 2.32V SC-70-3   | ADI (Analog Devices, Inc.) | 700 pcs  |
|                                     | <a href="#">ADM809ZAKS-REEL</a>   | IC SUPERVISOR P/P 2.32V SC70-3    | ADI (Analog Devices, Inc.) | 500 pcs  |
|                                     | <a href="#">ADM810JAKS-REEL7</a>  | IC SUPERVISOR P/P 4.0V SC70-3     | ADI (Analog Devices, Inc.) | 500 pcs  |
|                                     | <a href="#">ADM810JARTZ-REEL</a>  | IC SUPERVISORY CIRCUIT SOT-23     | ADI (Analog Devices, Inc.) | 100 pcs  |
|                                     | <a href="#">ADM810JARTZ-REEL7</a> | IC SUPERVISORY CIRCUIT SOT-23     | ADI (Analog Devices, Inc.) | 900 pcs  |
|                                     | <a href="#">ADM809ZARTZ-REEL</a>  | IC SUPERVISOR MPU 2.32V SOT23     | ADI (Analog Devices, Inc.) | 500 pcs  |
|                                     | <a href="#">ADM810LAKSZ-REEL7</a> | IC SUPERVISOR MPU 4.63V SC-70-3   | ADI (Analog Devices, Inc.) | 500 pcs  |
|                                     | <a href="#">ADM809ZAKS-REEL7</a>  | IC SUPERVISOR P/P 2.32V SC70-3    | ADI (Analog Devices, Inc.) | 500 pcs  |
|                                     | <a href="#">ADM810LAKS-REEL7</a>  | IC SUPERVISOR P/P 4.63V SC70-3    | ADI (Analog Devices, Inc.) | 500 pcs  |
|                                     | <a href="#">ADM809ZAKSZ-RL7</a>   | ADM809ZAKSZ-RL7 AD                | AD                         | 1200 pcs |
|                                     | <a href="#">ADM810JAKSZ-REEL7</a> | IC SUPERVISOR MPU 4.0V SC-70-3    | ADI (Analog Devices, Inc.) | 500 pcs  |
|                                     | <a href="#">ADM809ZART-REEL</a>   | IC SUPERVSR PUSH/PULL 2.32V SOT23 | ADI (Analog Devices, Inc.) | 500 pcs  |
|                                     | <a href="#">ADM810AMRT-REEL-7</a> | ADM810AMRT-REEL-7 AD              | AD                         | 500 pcs  |
|                                     | <a href="#">ADM810JAKS-REEL</a>   | IC SUPERVISOR P/P 4.0V SC70-3     | ADI (Analog Devices, Inc.) | 500 pcs  |
|                                     | <a href="#">ADM809ZAKSZ-REEL7</a> | IC SUPERVISOR MPU 2.32V SC-70-3   | ADI (Analog Devices, Inc.) | 2419 pcs |
|                                     | <a href="#">ADM810JAKSZ-REEL</a>  | IC SUPERVISOR MPU 4.0V SC-70-3    | ADI (Analog Devices, Inc.) | 500 pcs  |
|                                     | <a href="#">ADM810LAKSZ-REEL</a>  | IC SUPERVISOR MPU 4.63V SC-70-3   | ADI (Analog Devices, Inc.) | 3380 pcs |
|                                     | <a href="#">ADM809ZAKSZ</a>       | ADM809ZAKSZ AD                    | AD                         | 2274 pcs |
|                                     | <a href="#">ADM809ZAKS-RL7</a>    | ADM809ZAKS-RL7 AD                 | AD                         | 1937 pcs |

|   |  |   |  |
|---|--|---|--|
| <a href="#">ADM809ZARTZ-REEL7 Stock</a>     | <a href="#">ADM809ZARTZ-REEL7 Price</a>              | <a href="#">ADM809ZARTZ-REEL7 Electronics</a> | <a href="#">ADM809ZARTZ-REEL7 Components</a>   |
| <a href="#">ADM809ZARTZ-REEL7 Inventory</a> | <a href="#">ADM809ZARTZ-REEL7 Digikey</a>            | <a href="#">Supplier ADM809ZARTZ-REEL7</a>    | <a href="#">Order ADM809ZARTZ-REEL7 Online</a> |
| <a href="#">Inquiry ADM809ZARTZ-REEL7</a>   | <a href="#">ADM809ZARTZ-REEL7 Image</a>              | <a href="#">ADM809ZARTZ-REEL7 Picture</a>     | <a href="#">ADM809ZARTZ-REEL7 PDF</a>          |
| <a href="#">ADM809ZARTZ-REEL7 Datasheet</a> | <a href="#">Download ADM809ZARTZ-REEL7 Datasheet</a> | <a href="#">Manufacturer</a>                  |  |