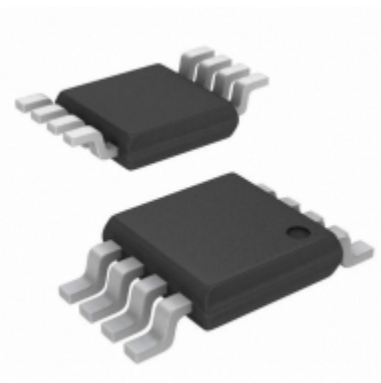


| EMC1043-1-ACZL-TR | |
|-------------------------|---|
| Part Number | EMC1043-1-ACZL-TR |
| Manufacturer | Micrel / Microchip Technology |
| Description | SENSOR TEMPERATURE SMBUS 8MSOP |
| Quantity Available | 3580 pcs in stock |
| Datasheets | |
| EMC1043-1-ACZL-TR Price | Request Price & Lead Time Online or Email us: Info@ariat-tech.com |



[GET A QUOTE](#)

| Technical Information of EMC1043-1-ACZL-TR | | | |
|--|---|-----------------------------|--|
| Manufacturer Part Number | EMC1043-1-ACZL-TR | Category | Sensors, Transducers |
| Manufacturer | Micrel / Microchip Technology | Description | SENSOR TEMPERATURE SMBUS 8MSOP |
| Package / Case | Tape & Reel (TR) | Quantity Available | 3580 |
| Series | - | Operating Temperature | -40°C ~ 125°C |
| Mounting Type | Surface Mount | Output Type | SMBus |
| Features | One-Shot, Standby Mode | Package / Case | 8-TSSOP, 8-MSOP (0.118", 3.00mm Width) |
| Supplier Device Package | 8-MSOP | Resolution | 11 b |
| Voltage - Supply | 3 V ~ 3.6 V | Sensor Type | Digital, Local/Remote |
| Test Condition | 0°C ~ 85°C (-20°C ~ 85°C) | Sensing Temperature - Local | -20°C ~ 85°C |
| Sensing Temperature - Remote | -64°C ~ 191°C | Accuracy - Highest (Lowest) | ±1.5°C (±3°C) |
| Packaging | Tape & Reel (TR) | | |

EMC1043-1-ACZL-TR 3580pcs New and Original in Stock, Find EMC1043-1-ACZL-TR Stock, Datasheet, PDF, Inventory at Ariat-Tech.com Online, Order EMC1043-1-ACZL-TR Micrel / Microchip Technology with warrantied and confidence. RFQ EMC1043-1-ACZL-TR : Info@Ariat-Tech.com

| Related parts for EMC1043-1-ACZL-TR | | | | |
|-------------------------------------|-----------------------------------|-----------------------------------|-------------------------------|-----------|
| Image | Part Number | Description | Manufacturer | Qty |
| | EMC1046-6-AIZL-TR | SENSOR TEMPERATURE SMBUS 10TSSOP | Micrel / Microchip Technology | 3972 pcs |
| | EMC1043-5-ACZL-TR | SENSOR TEMPERATURE SMBUS 8MSOP | Micrel / Microchip Technology | 30866 pcs |
| | EMC1043-2-ACZL | EMC1043-2-ACZL Microchip | Micrel / Microchip Technology | 233 pcs |
| | EMC1023-1-ACZL-TR | EMC1023-1-ACZL-TR SMSC | SMSC Corporation | 1518 pcs |
| | EMC1023-1-ACZB-TR | EMC1023-1-ACZB-TR SMSC | SMSC Corporation | 17985 pcs |
| | EMC1043-4-ACZL-TR | SENSOR TEMPERATURE SMBUS 8MSOP | Micrel / Microchip Technology | 3680 pcs |
| | EMC08DTEI | CONN EDGE DUAL FEMALE 16POS 0.100 | Sullins Connector Solutions | 500 pcs |
| | EMC1001-AFZQ-TR | SENSOR TEMPERATURE SMBUS SOT6 | Micrel / Microchip Technology | 2435 pcs |
| | EMC1043-1ACZL-TR | EMC1043-1ACZL-TR SMSC | SMSC Corporation | 2441 pcs |
| | EMC1043-3-ACZL-TR | SENSOR TEMPERATURE SMBUS 8MSOP | Micrel / Microchip Technology | 10424 pcs |
| | EMC1043 | EMC1043 SMSC | SMSC Corporation | 5272 pcs |
| | EMC1033-ACZL-TR | SENSOR TEMPERATURE SMBUS 8TSSOP | Micrel / Microchip Technology | 500 pcs |
| | EMC1046-1-AIZL-TR | SENSOR TEMPERATURE SMBUS 10TSSOP | Micrel / Microchip Technology | 4 pcs |
| | EMC08DTEN | CONN EDGE DUAL FEMALE 16POS 0.100 | Sullins Connector Solutions | 500 pcs |
| | EMC08DTES | CONN EDGE DUAL FEMALE 16POS 0.100 | Sullins Connector Solutions | 500 pcs |
| | EMC1047-2-AIZL-TR | SENSOR TEMPERATURE SMBUS 10TSSOP | Micrel / Microchip Technology | 1821 pcs |
| | EMC1002-2-ACZL-TR | SENSOR TEMPERATURE SMBUS 8MSOP | Micrel / Microchip Technology | 2700 pcs |
| | EMC1001-1-AFZQ-TR | SENSOR TEMPERATURE SMBUS SOT6 | Micrel / Microchip Technology | 2042 pcs |
| | EMC1043-2-ACZL-TR | SENSOR TEMPERATURE SMBUS 8MSOP | Micrel / Microchip Technology | 4000 pcs |
| | EMC1047-1-AIZL-TR | SENSOR TEMPERATURE SMBUS 10TSSOP | Micrel / Microchip Technology | 4000 pcs |

IC Chips & IGBT Module - Hot Stock Part Number

| | | | | |
|-----------------------------------|-----------------------------------|-----------------------------------|-----------------------------------|-----------------------------------|
| EMC1001-1-AFZQ-TR | EMC1001-AFZQ-TR | EMC1002-2-ACZL-TR | EMC1023-1-ACZB-TR | EMC1023-1-ACZL-TR |
| EMC1043-1ACZL-TR | EMC1043-2-ACZL-TR | EMC1043-3-ACZL-TR | EMC1043-4-ACZL-TR | EMC1043-5-ACZL-TR |
| EMC1047-1-AIZL-TR | EMC1047-2-AIZL-TR | EMC1053-1-ACZL-TR | EMC1053-2-ACZL-TR | EMC1053-3-ACZL-TR |
| EMC1053-4-ACZL-TR | EMC1063-1-ACZL-TR | EMC1063-2-ACZL-TR | EMC1102-ACZL-TR | EMC1103-1-AIZL-TR |
| EMC1103-AIZL-TR | EMC1133-AIZL-TR | EMC1152-1-AIZL | EMC1202-AGZQ-TR | EMC1212-AGZQ-TR |
| EMC1402-1-ACZL | EMC1402-1-ACZL-TR | EMC1402-2-ACZL-TR | EMC1403-1 | EMC1403-1-AIA-TR |
| EMC1403-1-AIAL-TR | EMC1403-1-AIZL-TR | EMC1403-1-YZT-TR | EMC1403-2-YZT-TR | EMC1404-1-AIZL-TR |
| EMC1404-3-AIZL-TR | EMC1404-4-AIZL-TR | EMC1412-1-AC3-TR | EMC1412-1-ACZL | EMC1412-1-ACZL-TR |
| EMC1412-2-ACZL-TR | EMC1412-A-AC3-TR | EMC1412-A-ACZL | EMC1413-1-AIZL-TR | EMC1413-A-AIA-TR |
| EMC1414-1-AIZL-TR | EMC1414-A-AIZL | EMC1414-A-AIZL-TR | EMC1422-1-ACZL | EMC1422-1-ACZL-TR |