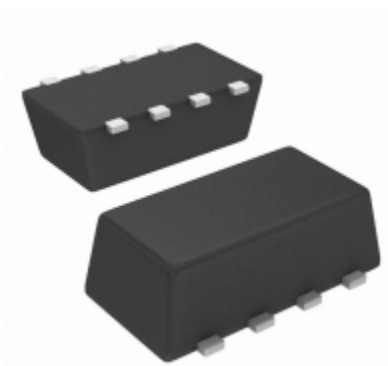


SI5432DC-T1-GE3	
Part Number	SI5432DC-T1-GE3
Manufacturer	Electro-Films (EFI) / Vishay
Description	MOSFET N-CH 20V 6A 1206-8
Quantity Available	48000 pcs in stock
Datasheets	
SI5432DC-T1-GE3 Price	Request Price & Lead Time Online or Email us: Info@ariat-tech.com


[GET A QUOTE](#)

Technical Information of SI5432DC-T1-GE3			
Manufacturer Part Number	SI5432DC-T1-GE3	Category	Discrete Semiconductor
Manufacturer	Electro-Films (EFI) / Vishay	Description	MOSFET N-CH 20V 6A 1206-8
Package / Case	Tape & Reel (TR)	Quantity Available	48000
Manufacturer Standard Lead Time	27 Weeks	Detailed Description	N-Channel 20V 6A (Tc) 2.5W (Ta), 6.3W (Tc) Surface Mount 1206-8 ChipFET™
Series	TrenchFET®	Technology	MOSFET (Metal Oxide)
Operating Temperature	-55°C ~ 150°C (TJ)	Mounting Type	Surface Mount
Package / Case	8-SMD, Flat Lead	Supplier Device Package	1206-8 ChipFET™
Power Dissipation (Max)	2.5W (Ta), 6.3W (Tc)	FET Type	N-Channel
FET Feature	-	Drain to Source Voltage (Vdss)	20V
Current - Continuous Drain (Id) @ 25°C	6A (Tc)	Rds On (Max) @ Id, Vgs	20 mOhm @ 8.3A, 4.5V
Vgs(th) (Max) @ Id	1.5V @ 250µA	Gate Charge (Qg) (Max) @ Vgs	33nC @ 10V
Input Capacitance (Ciss) (Max) @ Vds	1200pF @ 10V	Drive Voltage (Max Rds On, Min Rds On)	2.5V, 4.5V
Vgs (Max)	±12V	Packaging	Tape & Reel (TR)
Lead Free Status / RoHS Status	Lead free / RoHS Compliant	Moisture Sensitivity Level (MSL)	1 (Unlimited)
Other Names	SI5432DC-T1-GE3TR SI5432DCT1GE3		

SI5432DC-T1-GE3 48000pcs New and Original in Stock, Find SI5432DC-T1-GE3 Stock, Datasheet, PDF, Inventory at Ariat-Tech.com Online, Order SI5432DC-T1-GE3 Electro-Films (EFI) / Vishay with warrantied and confidence. RFQ SI5432DC-T1-GE3 : Info@Ariat-Tech.com

Related parts for SI5432DC-T1-GE3				
Image	Part Number	Description	Manufacturer	Qty
	SI5433BDC-T1-GE3	MOSFET P-CH 20V 4.8A 1206-8	Vishay / Siliconix	6000 pcs
	SI5435BDC-T1-E3	MOSFET P-CH 30V 4.3A 1206-8	Vishay / Siliconix	2458 pcs
	SI5424DC-T1-GE3	MOSFET N-CH 30V 6A 1206-8	Vishay / Siliconix	48000 pcs
	SI5429DU-T1-GE3	MOSFET P-CH 30V 12A PWR PK	Electro-Films (EFI) / Vishay	267000 pcs
	SI5435BDC-T1-E3	MOSFET P-CH 30V 4.3A 1206-8	Electro-Films (EFI) / Vishay	2458 pcs
	SI5432DC-T1-GE3-S	SI5432DC-T1-GE3-S VISHAY	Vishay	536605 pcs
	SI5419DU-T1-GE3	MOSFET P-CH 30V 12A PPAK CHIPFET	Electro-Films (EFI) / Vishay	33000 pcs
	SI5419DU-T1-GE3	MOSFET P-CH 30V 12A PPAK CHIPFET	Vishay / Siliconix	33000 pcs
	SI5433BDC-T1-E3	MOSFET P-CH 20V 4.8A 1206-8	Vishay / Siliconix	330000 pcs
	SI5433BDC-T1-GE3	MOSFET P-CH 20V 4.8A 1206-8	Electro-Films (EFI) / Vishay	500 pcs
	SI5424DC-T1-GE3	MOSFET N-CH 30V 6A 1206-8	Electro-Films (EFI) / Vishay	48000 pcs
	SI5418DU-T1-GE3	MOSFET N-CH 30V 12A PPAK CHIPFET	Electro-Films (EFI) / Vishay	500 pcs
	SI5424DC-T1-E3	MOSFET N-CH 30V 6A 1206-8	Electro-Films (EFI) / Vishay	50000 pcs
	SI5433DC-T1	SI5433DC-T1 VISHAY	Vishay	5400 pcs
	SI5433BDC-T1-E3	MOSFET P-CH 20V 4.8A 1206-8	Electro-Films (EFI) / Vishay	330000 pcs
	SI5418DU-T1-GE3	MOSFET N-CH 30V 12A PPAK CHIPFET	Vishay / Siliconix	500 pcs
	SI5433DC-T1-E3	SI5433DC-T1-E3 VISHAY	Vishay	3000 pcs
	SI5429DU-T1-GE3	MOSFET P-CH 30V 12A PWR PK	Vishay / Siliconix	267000 pcs
	SI5424DC-T1-E3	MOSFET N-CH 30V 6A 1206-8	Vishay / Siliconix	50000 pcs
	SI5432DC-T1-GE3	MOSFET N-CH 20V 6A 1206-8	Vishay / Siliconix	48000 pcs

IC Chips & IGBT Module - Hot Stock Part Number

SI5402DC-T1	SI5402DC-T1-E3	SI5402DC-T1-E3	SI5404BDC-T1-E3	SI5404BDC-T1-E3
SI5404DC	SI5404DC-T1	SI5404DC-T1-E3	SI5406CDC-T1-GE3	SI5406CDC-T1-GE3
SI5406CDC-T1-GE3-S	SI5406DC-T1	SI5406DC-T1-E3	SI5406DC-T1-E3	SI5406DC-T1-E3-S
SI5406DP-T1-E3	SI5419DU-T1-GE3	SI5419DU-T1-GE3	SI5424DC-T1-E3	SI5424DC-T1-E3
SI5424DC-T1-GE3	SI5424DC-T1-GE3	SI5429DU-T1-GE3	SI5429DU-T1-GE3	SI5432DC-T1-GE3
SI5432DC-T1-GE3-S	SI5433BDC-T1-E3	SI5433BDC-T1-E3	SI5433DC-T1	SI5433DC-T1-E3
SI5435BDC-T1-E3	SI5435BDC-T1-E3	SI5435BDC-T1-GE3	SI5435BDC-T1-GE3	SI5441BDC-T1-E3
SI5441BDC-T1-E3	SI5441BDC-T1-GE3	SI5441BDC-T1-GE3	SI5441DC	SI5441DC-T1
SI5441DC-T1-E3	SI5441DC-T1-E3	SI5443DC	SI5443DC-T1	SI5443DC-T1-E3
SI5443DC-T1-E3	SI5445BDC-T1-E3	SI5445BDC-T1-E3	SI5445DC-T1	SI5445DC-T1-E3