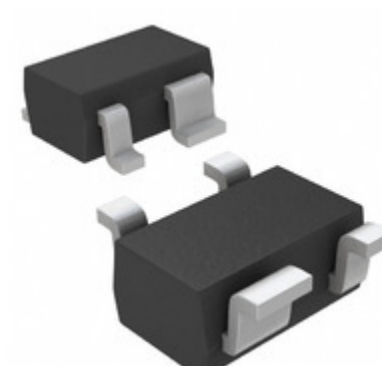


<b>MAX6467XS46D3+T</b>	
Part Number	<a href="#">MAX6467XS46D3+T</a>
Manufacturer	<a href="#">Maxim Integrated</a>
Description	IC MPU/RESET CIRC 4.625V SC70-4
Quantity Available	500 pcs in stock
Datasheets	<a href="#">MAX6467XS46D3+T.pdf</a>
MAX6467XS46D3+T Price	<a href="#">Request Price &amp; Lead Time Online</a> or Email us: <a href="mailto:Info@ariat-tech.com">Info@ariat-tech.com</a>


[GET A QUOTE](#)

Technical Information of MAX6467XS46D3+T			
Manufacturer Part Number	<a href="#">MAX6467XS46D3+T</a>	Category	<a href="#">Integrated Circuits (ICs)</a>
Manufacturer	<a href="#">Maxim Integrated</a>	Description	IC MPU/RESET CIRC 4.625V SC70-4
Package / Case	Tape & Reel (TR)	Quantity Available	500
Voltage - Threshold	4.625V	Type	Simple Reset/Power-On Reset
Supplier Device Package	SC-70-4	Series	-
Reset Timeout	150 ms Minimum	Reset	Active Low
Packaging	Tape & Reel (TR)	Package / Case	SC-82A, SOT-343
Output	Open Drain or Open Collector	Operating Temperature	-40°C ~ 125°C (TA)
Number of Voltages Monitored	1	Mounting Type	Surface Mount

MAX6467XS46D3+T 500pcs New and Original in Stock, Find MAX6467XS46D3+T Stock, Datasheet, PDF, Inventory at Ariat-Tech.com Online, Order MAX6467XS46D3+T Maxim Integrated with warrantied and confidence. RFQ MAX6467XS46D3+T : [Info@Ariat-Tech.com](mailto:Info@Ariat-Tech.com)

Related parts for MAX6467XS46D3+T				
Image	Part Number	Description	Manufacturer	Quantity
	<a href="#">MAX6467XS33D3+T</a>	IC MPU/RESET CIRC 3.30V SC70-4	Maxim Integrated	500 pcs
	<a href="#">MAX6467XS29D3</a>	MAX6467XS29D3 MAXIM	MAXIM	2500 pcs
	<a href="#">MAX6467XS32D3/V+T</a>	IC MPU/RESET CIRC 3.20V SC70-4	Maxim Integrated	500 pcs
	<a href="#">MAX6468US33D3+T</a>	IC MPU/RESET CIRC 3.30V SOT143-4	Maxim Integrated	500 pcs
	<a href="#">MAX6467XS26D3+T</a>	IC MPU/RESET CIRC 2.625V SC70-4	Maxim Integrated	500 pcs
	<a href="#">MAX6467XS26D7+T</a>	IC MPU/RESET CIRC 2.625V SC70-4	Maxim Integrated	800 pcs
	<a href="#">MAX6468US22D3+T</a>	IC MPU/RESET CIRC 2.188V SOT143	Maxim Integrated	500 pcs
	<a href="#">MAX6467XS32D3+T</a>	IC MPU/RESET CIRC 3.20V SC70-4	Maxim Integrated	500 pcs
	<a href="#">MAX6468US16D3+T</a>	IC MPU/RESET CIRC 1.575V SOT143	Maxim Integrated	500 pcs
	<a href="#">MAX6468US33D7+T</a>	IC MPU/RESET CIRC 3.30V SOT143-4	Maxim Integrated	500 pcs
	<a href="#">MAX6468US26D3+T</a>	IC MPU/RESET CIRC 2.625V SOT143	Maxim Integrated	500 pcs
	<a href="#">MAX6468US26D3-T</a>	MAX6468US26D3-T MAX	MAX	2500 pcs
	<a href="#">MAX6467XS25D3+T</a>	IC MPU/RESET CIRC 2.500V SC70-4	Maxim Integrated	500 pcs
	<a href="#">MAX6468US46D3+T</a>	IC MPU/RESET CIRC 4.625V SOT143	Maxim Integrated	500 pcs
	<a href="#">MAX6468US29D3-T</a>	MAX6468US29D3-T MAXIM	MAXIM	49500 pcs
	<a href="#">MAX6467XS23D3+T</a>	IC MPU/RESET CIRC 2.313V SC70-4	Maxim Integrated	500 pcs
	<a href="#">MAX6467XS29D3+T</a>	IC MPU/RESET CIRC 2.925V SC70-4	Maxim Integrated	2326 pcs
	<a href="#">MAX6468US29D3+T</a>	IC MPU/RESET CIRC 2.925V SOT143	Maxim Integrated	5000 pcs
	<a href="#">MAX6467XS31D3+T</a>	IC MPU/RESET CIRC 3.075V SC70-4	Maxim Integrated	500 pcs
	<a href="#">MAX6468XS16D3+T</a>	IC MPU/RESET CIRC 1.575V SC70-4	Maxim Integrated	500 pcs

<a href="#">MAX6467XS46D3+T Stock</a>	<a href="#">MAX6467XS46D3+T Price</a>	<a href="#">MAX6467XS46D3+T Electronics</a>	<a href="#">MAX6467XS46D3+T Components</a>
<a href="#">MAX6467XS46D3+T Inventory</a>	<a href="#">MAX6467XS46D3+T Digikey</a>	<a href="#">Supplier MAX6467XS46D3+T</a>	<a href="#">Order MAX6467XS46D3+T Online</a>
<a href="#">Inquiry MAX6467XS46D3+T</a>	<a href="#">MAX6467XS46D3+T Image</a>	<a href="#">MAX6467XS46D3+T Picture</a>	<a href="#">MAX6467XS46D3+T PDF</a>
<a href="#">MAX6467XS46D3+T Datasheet</a>	<a href="#">Download MAX6467XS46D3+T Datasheet</a>	<a href="#">Manufacturer Maxim Integrated</a>	