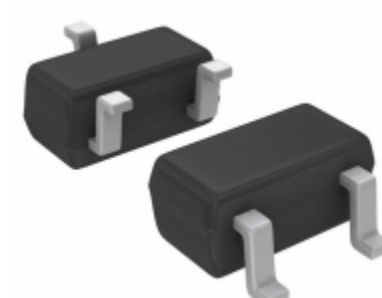


| RCLAMP0502BATCT | |
|-----------------------|---|
| Part Number | RCLAMP0502BATCT |
| Manufacturer | Semtech |
| Description | TVS DIODE 5VWM 25VC SC75 |
| Quantity Available | 82730 pcs in stock |
| Datasheets | |
| RCLAMP0502BATCT Price | Request Price & Lead Time Online or Email us: Info@ariat-tech.com |


[GET A QUOTE](#)

| Technical Information of RCLAMP0502BATCT | | | |
|--|---------------------------------|----------------------------------|------------------------------------|
| Manufacturer Part Number | RCLAMP0502BATCT | Category | Circuit Protection |
| Manufacturer | Semtech | Description | TVS DIODE 5VWM 25VC SC75 |
| Package / Case | Tape & Reel (TR) | Quantity Available | 82730 |
| Series | RailClamp® | Operating Temperature | -55°C ~ 125°C (TJ) |
| Mounting Type | Surface Mount | Type | Zener |
| Capacitance @ Frequency | 1.2pF @ 1MHz | Applications | General Purpose |
| Package / Case | SC-75, SOT-416 | Supplier Device Package | SC-75 (SOT523) |
| Unidirectional Channels | 2 | Voltage - Reverse Standoff (Typ) | 5V (Max) |
| Voltage - Breakdown (Min) | 6V | Voltage - Clamping (Max) @ Ipp | 25V |
| Current - Peak Pulse (10/1000µs) | 5A (8/20µs) | Power - Peak Pulse | 125W |
| Power Line Protection | No | Packaging | Tape & Reel (TR) |

RCLAMP0502BATCT 82730pcs New and Original in Stock, Find RCLAMP0502BATCT Stock, Datasheet, PDF, Inventory at Ariat-Tech.com Online, Order RCLAMP0502BATCT Semtech with warrantied and confidence. RFQ RCLAMP0502BATCT : Info@Ariat-Tech.com

| Related parts for RCLAMP0502BATCT | | | | |
|-----------------------------------|----------------------------------|----------------------------------|--------------|------------|
| Image | Part Number | Description | Manufacturer | Qty |
| | RCLAMP0502A | RCLAMP0502A SEMTECH | Semtech | 45000 pcs |
| | RCLAMP0502N | RCLAMP0502N SEMTECH | Semtech | 15 pcs |
| | RClamp0501P.TCT | RClamp0501P.TCT SEMT | SEMT | 3560 pcs |
| | RCL75R | POT 75 OHM 7.5W WIREWOUND LINEAR | Ohmite | 500 pcs |
| | RCLAMP0501T.TNT | TVS DIODE 5VWM 15VC SLP1006P2T | Semtech | 500 pcs |
| | RCLAMP0504FBTCT | TVS DIODE 5V 17.5V SC70-6 | Semtech | 500 pcs |
| | RCLAMP0504F | RCLAMP0504F SEMTECH | Semtech | 3000 pcs |
| | RCL750E | POT 750 OHM 7.5W WIREWOUND LIN | Ohmite | 500 pcs |
| | RCLAMP0503N.TCT | TVS DIODE 6.5VWM 30VC | Semtech | 309000 pcs |
| | RClamp0502B | RClamp0502B SEMTECH | Semtech | 1035 pcs |
| | RCLAMP0504F TCT | RCLAMP0504F TCT SEMTECH | Semtech | 2480 pcs |
| | RCLAMP0504FA.TCT | RCLAMP0504FA.TCT SEMTECH20 | SEMTECH20 | 120328 pcs |
| | RCL75RE | POT 75 OHM 7.5W WIREWOUND LINEAR | Ohmite | 500 pcs |
| | RCLAMP0502A.TCT | TVS DIODE 5VWM 18VC SC89-6 | Semtech | 66900 pcs |
| | RCLAMP0504F.TCT | TVS DIODE 5VWM 23VC SC70-6 | Semtech | 46895 pcs |
| | RCL750 | POT 750 OHM 7.5W WIREWOUND LIN | Ohmite | 500 pcs |
| | RCLAMP0502B.TCT | TVS DIODE 5VWM 25VC SC75 | Semtech | 395000 pcs |
| | RCLAMP0502N.TCT | TVS DIODE 6.5VWM 30VC 6SLP | Semtech | 30000 pcs |
| | RCLAMP0504FATCT | TVS DIODE 5VWM 25VC SC70-6 | Semtech | 12500 pcs |
| | RCLAMP0503F.TCT | TVS DIODE 5VWM 25VC | Semtech | 16500 pcs |

IC Chips & IGBT Module - Hot Stock Part Number

| | | | | |
|----------------------------------|---------------------------------|---------------------------------|----------------------------------|---------------------------------|
| RCL10421MTR | RCL10469 | RCL10485 | RCL10488MTL | RCL10650 |
| RCL10651 | RCL10652 | RCL10806 | RCL1225100RJNEG | RCL122522R0JNEG |
| RClamp0501P.TCT | RCLAMP0502A | RCLAMP0502A.TCT | RClamp0502B | RCLAMP0502B.TCT |
| RCLAMP0502N.TCT | RCLAMP0503F.TCT | RCLAMP0503N.TCT | RCLAMP0504F | RCLAMP0504F.TCT |
| RCLAMP0504FA.TCT | RCLAMP0504FATCT | RCLAMP0504M.TBT | RClamp0504M.TC | RCLAMP0504M.TCT |
| RCLAMP0504N.TCT | RCLAMP0504P.TBT | RCLAMP0504P.TCT | RCLAMP0504PA.TCT | RCLAMP0504PATCT |
| RCLAMP0504S.TCT | RCLAMP0504T | RCLAMP0506T.TCT | RClamp0508M | RCLAMP0508M.TBT |
| RCLAMP0512TQCT | RCLAMP0514.TBT | RCLAMP0514M | RCLAMP0514M.TBT | RCLAMP0514MTBT |
| RCLAMP0521P.TCT | RCLAMP0521P.TNT | RCLAMP0521PA | RCLAMP0521PATCT | RCLAMP0521Z.TNT |
| RCLAMP0522P | RCLAMP0522P.TCT | RCLAMP0524J.TCT | RCLAMP0524P | RCLAMP0524P.TCT |