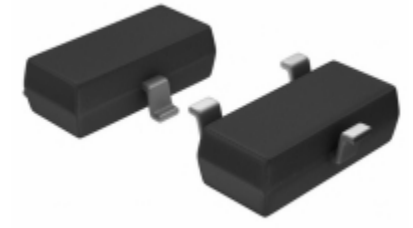


GSD2004A-HE3-08	
Part Number	GSD2004A-HE3-08
Manufacturer	Vishay / Semiconductor - Diodes Division
Description	DIODE ARRAY GP 240V 225MA SOT23
Quantity Available	12238 pcs in stock
Datasheets	
GSD2004A-HE3-08 Price	Request Price & Lead Time Online or Email us: Info@ariat-tech.com


[GET A QUOTE](#)

Technical Information of GSD2004A-HE3-08			
Manufacturer Part Number	GSD2004A-HE3-08	Category	Discrete Semiconductor
Manufacturer	Vishay / Semiconductor - Diodes Division	Description	DIODE ARRAY GP 240V 225MA SOT23
Package / Case	Tape & Reel (TR)	Quantity Available	12238
Series	-	Mounting Type	Surface Mount
Package / Case	TO-236-3, SC-59, SOT-23-3	Supplier Device Package	SOT-23
Diode Type	Standard	Voltage - Forward (Vf) (Max) @ If	1V @ 100mA
Current - Reverse Leakage @ Vr	100nA @ 240V	Diode Configuration	1 Pair Common Anode
Voltage - DC Reverse (Vr) (Max)	240V	Current - Average Rectified (Io) (per Diode)	225mA
Speed	Fast Recovery = 200mA (Io)	Reverse Recovery Time (trr)	50ns
Operating Temperature - Junction	150°C (Max)	Packaging	Tape & Reel (TR)

GSD2004A-HE3-08 12238pcs New and Original in Stock, Find GSD2004A-HE3-08 Stock, Datasheet, PDF, Inventory at Ariat-Tech.com Online, Order GSD2004A-HE3-08 Vishay / Semiconductor - Diodes Division with warrantied and confidence. RFQ GSD2004A-HE3-08 : Info@Ariat-Tech.com

Related parts for GSD2004A-HE3-08

Image	Part Number	Description	Manufacturer	Qty
	GSD09007LF	GSD09007LF AMPHEN	AMPHEN	10830 pcs
	GSD2004A-G3-08	DIODE ARRAY GP 240V 225MA SOT23	Vishay / Semiconductor - Diodes Division	12238 pcs
	GSD0T203	KEY LEGEND SET D F1-F4 KEYS 26PC	Storm Interface	500 pcs
	GSD2004A-E3-18	DIODE ARRAY GP 240V 225MA SOT23	Electro-Films (EFI) / Vishay	500 pcs
	GSD2004A-V-GS08	GSD2004A-V-GS08 VISHAY	Vishay	288888 pcs
	GSD2004A-E3-08	DIODE ARRAY GP 240V 225MA SOT23	Vishay / Semiconductor - Diodes Division	12238 pcs
	GSD2004A-HE3-08	DIODE ARRAY GP 240V 225MA SOT23	Electro-Films (EFI) / Vishay	12238 pcs
	GSD2004C-G	GSD2004C-G VISHAY	Vishay	12238 pcs
	GSD2004A-G3-18	DIODE ARRAY GP 240V 225MA SOT23	Electro-Films (EFI) / Vishay	500 pcs
	GSD2004C-E3-08	DIODE ARRAY GP 240V 225MA SOT23	Vishay / Semiconductor - Diodes Division	12238 pcs
	GSD2004C-E3-08	DIODE ARRAY GP 240V 225MA SOT23	Electro-Films (EFI) / Vishay	12238 pcs
	GSD2004C-E3-18	DIODE ARRAY GP 240V 225MA SOT23	Electro-Films (EFI) / Vishay	500 pcs
	GSD2004A-V-GS18	GSD2004A-V-GS18 VISHAY	Vishay	29530 pcs
	GSD2004A-E3-08	DIODE ARRAY GP 240V 225MA SOT23	Electro-Films (EFI) / Vishay	12238 pcs
	GSD2004A-G3-08	DIODE ARRAY GP 240V 225MA SOT23	Electro-Films (EFI) / Vishay	12238 pcs
	GSD2004A-E3-18	DIODE ARRAY GP 240V 225MA SOT23	Vishay / Semiconductor - Diodes Division	500 pcs
	GSD2004A-HE3-18	DIODE ARRAY GP 240V 225MA SOT23	Vishay / Semiconductor - Diodes Division	500 pcs
	GSD2004A-HE3-18	DIODE ARRAY GP 240V 225MA SOT23	Electro-Films (EFI) / Vishay	500 pcs
	GSD2004C-E3-18	DIODE ARRAY GP 240V 225MA SOT23	Vishay / Semiconductor - Diodes Division	500 pcs
	GSD2004A-G3-18	DIODE ARRAY GP 240V 225MA SOT23	Vishay / Semiconductor - Diodes Division	500 pcs

IC Chips & IGBT Module - Hot Stock Part Number

ATTINY861	BFR750L3RH	C1005X8R1E682K050BE	C2012SL1A104J	CM200DX-34SA
GSD09007LF	GSD2004A-E3-08	GSD2004A-E3-08	GSD2004A-G3-08	GSD2004A-G3-08
GSD2004A-HE3-08	GSD2004A-V-GS08	GSD2004A-V-GS18	GSD2004C-E3-08	GSD2004C-E3-08
GSD2004C-G	GSD2004C-G3-08	GSD2004C-G3-08	GSD2004C-HE3-08	GSD2004C-HE3-08
GSD2004S	GSD2004S-E3-08	GSD2004S-E3-08	GSD2004S-G3-08	GSD2004S-G3-08
GSD2004S-GS08	GSD2004S-HE3-08	GSD2004S-HE3-08	GSD2004S-V-GS08	GSD2004W-V-GS08
GSD2004WS-E3-18	GSD2004WS-E3-18	GSD2004WS-G3-08	GSD2004WS-G3-08	GSD2004WS-HE3-08
GSD2004WS-HE3-08	GSD4E-9301-TR	GSD4E-9302-TR	GSD4E-9311-TR	GSD4E-9312-TR
GSD4e-9312R-TR	GSD4E-9322-TR	GSD4E-9333-TR	GSD4E-9411-TR	HSMP-386E-TR1G
LM1117IDT-ADJ	SI4755-A10-GMR	SIA413DJ-T1-GE3	SKN8000P06	SM15T22A-TR