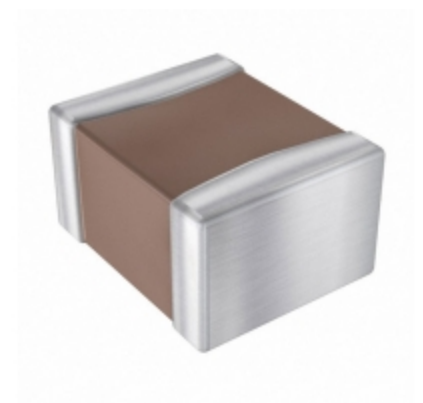


<b>1210ZD106MAT4A</b>	
Part Number	<a href="#">1210ZD106MAT4A</a>
Manufacturer	<a href="#">AVX Corporation</a>
Description	CAP CER 10UF 10V X5R 1210
Quantity Available	500 pcs in stock
Datasheets	
1210ZD106MAT4A Price	<a href="#">Request Price &amp; Lead Time Online</a> or Email us: <a href="mailto:Info@ariat-tech.com">Info@ariat-tech.com</a>


[GET A QUOTE](#)

Technical Information of 1210ZD106MAT4A			
Manufacturer Part Number	<a href="#">1210ZD106MAT4A</a>	Category	<a href="#">Capacitors</a>
Manufacturer	<a href="#">AVX Corporation</a>	Description	CAP CER 10UF 10V X5R 1210
Package / Case	Tape & Reel (TR)	Quantity Available	500
Series	-	Voltage - Rated	10V
Operating Temperature	-55°C ~ 85°C	Ratings	-
Mounting Type	Surface Mount, MLCC	Size / Dimension	0.126" L x 0.098" W (3.20mm x 2.50mm)
Height - Seated (Max)	-	Features	-
Capacitance	10µF	Tolerance	±20%
Applications	General Purpose	Lead Spacing	-
Package / Case	1210 (3225 Metric)	Temperature Coefficient	X5R
Thickness (Max)	0.110" (2.79mm)	Lead Style	-
Failure Rate	-	Packaging	Tape & Reel (TR)

1210ZD106MAT4A 500pcs New and Original in Stock, Find 1210ZD106MAT4A Stock, Datasheet, PDF, Inventory at Ariat-Tech.com Online, Order 1210ZD106MAT4A AVX Corporation with warrantied and confidence. RFQ 1210ZD106MAT4A : [Info@Ariat-Tech.com](mailto:Info@Ariat-Tech.com)

Related parts for 1210ZD106MAT4A				
Image	Part Number	Description	Manufacturer	Qty
	<a href="#">1210ZD475KAT2A</a>	CAP CER 4.7UF 10V X5R 1210	AVX Corporation	500 pcs
	<a href="#">1210ZC476MAT2A</a>	CAP CER 47UF 10V X7R 1210	AVX Corporation	500 pcs
	<a href="#">1210ZC475KA8GGT</a>	1210ZC475KA8GGT AVX	AVX Corporation	2000 pcs
	<a href="#">1210ZD106MAT2A</a>	CAP CER 10UF 10V X5R 1210	AVX Corporation	500 pcs
	<a href="#">1211</a>	SMT ADAPTERS 6 PACK 12SOIC/TSSOP	Adafruit	61 pcs
	<a href="#">1210ZG226ZAT4A</a>	CAP CER 22UF 10V Y5V 1210	AVX Corporation	500 pcs
	<a href="#">1210ZC475KAJ2A</a>	CAP CER 4.7UF 10V X7R 1210	AVX Corporation	500 pcs
	<a href="#">1210ZD475MAT2A</a>	CAP CER 4.7UF 10V X5R 1210	AVX Corporation	500 pcs
	<a href="#">1210ZD226KAT2A</a>	CAP CER 22UF 10V X5R 1210	AVX Corporation	500 pcs
	<a href="#">1210ZG106ZAT2A</a>	CAP CER 10UF 10V Y5V 1210	AVX Corporation	500 pcs
	<a href="#">1210ZG226ZAT2A</a>	CAP CER 22UF 10V Y5V 1210	AVX Corporation	500 pcs
	<a href="#">1210ZC335KAT2A</a>	CAP CER 3.3UF 10V X7R 1210	AVX Corporation	500 pcs
	<a href="#">1210ZC476KAT2A</a>	CAP CER 47UF 10V X7R 1210	AVX Corporation	500 pcs
	<a href="#">1210ZC475JAT2A</a>	CAP CER 4.7UF 10V X7R 1210	AVX Corporation	500 pcs
	<a href="#">1210ZC475MAT2A</a>	CAP CER 4.7UF 10V X7R 1210	AVX Corporation	500 pcs
	<a href="#">1210ZD226MAT2A</a>	CAP CER 22UF 10V X5R 1210	AVX Corporation	500 pcs
	<a href="#">1210ZC475KAT2A</a>	CAP CER 4.7UF 10V X7R 1210	AVX Corporation	420 pcs
	<a href="#">1210ZG155ZAT2A</a>	CAP CER 1.5UF 10V Y5V 1210	AVX Corporation	500 pcs
	<a href="#">1210ZD106KAT2A</a>	CAP CER 10UF 10V X5R 1210	AVX Corporation	2250 pcs
	<a href="#">1211</a>	CONN QC TAB 0.110 SOLDER	Keystone Electronics Corp.	500 pcs

**IC Chips & IGBT Module - Hot Stock Part Number**

<a href="#">1210ZC104MAT4A</a>	<a href="#">1210ZC105KAT2A</a>	<a href="#">1210ZC105MAT2A</a>	<a href="#">1210ZC106K4T2A</a>	<a href="#">1210ZC106K4Z2A</a>
<a href="#">1210ZC106KAT2A</a>	<a href="#">1210ZC106MAT2A</a>	<a href="#">1210ZC124KAT2A</a>	<a href="#">1210ZC152JAT2A</a>	<a href="#">1210ZC185JAT2A</a>
<a href="#">1210ZC185KAT2A</a>	<a href="#">1210ZC222MAT2A</a>	<a href="#">1210ZC224JAT2A</a>	<a href="#">1210ZC224JAT2A</a>	<a href="#">1210ZC225KAT2A</a>
<a href="#">1210ZC226KAT2A</a>	<a href="#">1210ZC226MAT2A</a>	<a href="#">1210ZC335KAT2A</a>	<a href="#">1210ZC475JAT2A</a>	<a href="#">1210ZC475KAJ2A</a>
<a href="#">1210ZC475KAT2A</a>	<a href="#">1210ZC475MAT2A</a>	<a href="#">1210ZC476KAT2A</a>	<a href="#">1210ZD106KAT2A</a>	<a href="#">1210ZD106MAT2A</a>
<a href="#">1210ZD226KAT2A</a>	<a href="#">1210ZD226MAT2A</a>	<a href="#">1210ZD475KAT2A</a>	<a href="#">1210ZD475MAT2A</a>	<a href="#">1210ZG106ZAT2A</a>
<a href="#">1210ZG155ZAT2A</a>	<a href="#">1210ZG226ZAT2A</a>	<a href="#">1210ZG226ZAT4A</a>	<a href="#">1214-50014 20.000MHZ</a>	<a href="#">1214009C</a>
<a href="#">1216.00MHZ</a>	<a href="#">121926-03300880</a>	<a href="#">1219B2-DB</a>	<a href="#">121CNQ050</a>	<a href="#">121NQ035</a>
<a href="#">121NQ035</a>	<a href="#">121NQ035R</a>	<a href="#">121NQ040</a>	<a href="#">121NQ040</a>	<a href="#">121NQ040R</a>
<a href="#">121NQ045</a>	<a href="#">121NQ045</a>	<a href="#">121NQ045PBF</a>	<a href="#">121NQ045R</a>	<a href="#">121NQ045R</a>