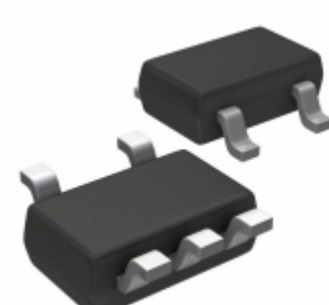


<b>ZXRE060H5TA</b>	
Part Number	ZXRE060H5TA
Manufacturer	Diodes Incorporated
Description	IC VREF SHUNT ADJ SC70
Quantity Available	128880 pcs in stock
Datasheets	<a href="#">ZXRE060H5TA.pdf</a>
ZXRE060H5TA Price	<a href="#">Request Price &amp; Lead Time Online</a> or Email us: <a href="mailto:Info@ariat-tech.com">Info@ariat-tech.com</a>


[GET A QUOTE](#)

Technical Information of ZXRE060H5TA			
Manufacturer Part Number	ZXRE060H5TA	Category	Integrated Circuits (ICs)
Manufacturer	Diodes Incorporated	Description	IC VREF SHUNT ADJ SC70
Package / Case	Tape & Reel (TR)	Quantity Available	128880
Series	-	Current - Supply	-
Operating Temperature	-40°C ~ 125°C (TA)	Mounting Type	Surface Mount
Output Type	Adjustable	Voltage - Input	-
Tolerance	±1%	Package / Case	5-TSSOP, SC-70-5, SOT-353
Temperature Coefficient	-	Supplier Device Package	SC-70-5
Current - Output	15mA	Reference Type	Shunt
Voltage - Output (Min/Fixed)	0.2V	Voltage - Output (Max)	18V
Noise - 0.1Hz to 10Hz	-	Noise - 10Hz to 10kHz	-
Current - Cathode	300µA	Packaging	Tape & Reel (TR)

ZXRE060H5TA 128880pcs New and Original in Stock, Find ZXRE060H5TA Stock, Datasheet, PDF, Inventory at Ariat-Tech.com Online, Order ZXRE060H5TA Diodes Incorporated with warrantied and confidence. RFQ ZXRE060H5TA : [Info@Ariat-Tech.com](mailto:Info@Ariat-Tech.com)

Related parts for ZXRE060H5TA				
Image	Part Number	Description	Manufacturer	Qty
	<a href="#">ZXRE060ET5TA</a>	IC VREF SHUNT ADJ TSOT23-5	Diodes Incorporated	11984 pcs
	<a href="#">ZXRE1004CFTA</a>	IC VREF SHUNT 1.22V SOT23	Diodes Incorporated	6000 pcs
	<a href="#">ZXRD1050PQ16TA</a>	IC REG CTRLR BUCK 16QSOP	Diodes Incorporated	500 pcs
	<a href="#">ZXRD1050NQ16TA</a>	IC REG CTRLR BUCK 16QSOP	Diodes Incorporated	500 pcs
	<a href="#">ZXRE1004EF</a>	ZXRE1004EF ZETEX	ZETEX	440 pcs
	<a href="#">ZXRE1004DRSTOA</a>	IC VREF SHUNT 1.22V TO92-3	Diodes Incorporated	500 pcs
	<a href="#">ZXRD1033NQ16TA</a>	IC REG CTRLR BUCK 16QSOP	Diodes Incorporated	500 pcs
	<a href="#">ZXRD1033PQ16TA</a>	IC REG CTRLR BUCK 16QSOP	Diodes Incorporated	500 pcs
	<a href="#">ZXRE1004DN8TA</a>	IC VREF SHUNT 1.22V 8SOP	Diodes Incorporated	500 pcs
	<a href="#">ZXRE1004CFTC</a>	IC VREF SHUNT 1.22V SOT23	Diodes Incorporated	500 pcs
	<a href="#">ZXRE1004DRSTZ</a>	IC VREF SHUNT 1.22V TO92-3	Diodes Incorporated	500 pcs
	<a href="#">ZXRE060FT4-7</a>	ZXRE060FT4-7 DIODES	Digital View Inc.	60000 pcs
	<a href="#">ZXRE1004DRSTOB</a>	IC VREF SHUNT 1.22V TO92-3	Diodes Incorporated	500 pcs
	<a href="#">ZXRE060AFT4-7</a>	IC VREF SHUNT ADJ X2-DFN201	Diodes Incorporated	120000 pcs
	<a href="#">ZXRE060AET5TA</a>	IC VREF SHUNT ADJ TSOT23-5	Diodes Incorporated	3000 pcs
	<a href="#">ZXRE060AH5TA</a>	IC VREF SHUNT ADJ SC70	Diodes Incorporated	21300 pcs
	<a href="#">ZXRD1033PQ16</a>	ZXRD1033PQ16 ZETEX	ZETEX	17920 pcs
	<a href="#">ZXRE1004DFTA</a>	IC VREF SHUNT 1.22V SOT23	Diodes Incorporated	12102 pcs
	<a href="#">ZXRE1004DFTC</a>	IC VREF SHUNT 1.22V SOT23	Diodes Incorporated	500 pcs
	<a href="#">ZXRE1004DR</a>	IC VREF SHUNT 1.22V TO92-3	Diodes Incorporated	2000 pcs

**IC Chips & IGBT Module - Hot Stock Part Number**

<a href="#">08055A620GAT4A</a>	<a href="#">2300 CMN2300</a>	<a href="#">AN8016NSH-E1</a>	<a href="#">APL5312-28BI-TRL</a>	<a href="#">DP83815DUJB</a>
<a href="#">FW215-TL-E</a>	<a href="#">GCM155R71H222KA37D</a>	<a href="#">IPP65R310CFD</a>	<a href="#">K7M163625A-QC75</a>	<a href="#">MC9S08PT60VQH</a>
<a href="#">MMBV2106LT1G</a>	<a href="#">SB20-03P-TD</a>	<a href="#">SI7106DN-T1-E3</a>	<a href="#">SS120JP20</a>	<a href="#">T90RIA120</a>
<a href="#">V37548C600A</a>	<a href="#">ZXRD060AFK-7</a>	<a href="#">ZXRD060FK-7</a>	<a href="#">ZXRD1033NQ16</a>	<a href="#">ZXRD1033PQ16</a>
<a href="#">ZXRE060AET5TA</a>	<a href="#">ZXRE060AFT4-7</a>	<a href="#">ZXRE060AH5TA</a>	<a href="#">ZXRE060ET5TA</a>	<a href="#">ZXRE060FT4-7</a>
<a href="#">ZXRE1004CFTA</a>	<a href="#">ZXRE1004DFTA</a>	<a href="#">ZXRE1004EFTA</a>	<a href="#">ZXRE1004FF</a>	<a href="#">ZXRE1004FFTA</a>
<a href="#">ZXRE125CFTA</a>	<a href="#">ZXRE125DFTA</a>	<a href="#">ZXRE125EFTA</a>	<a href="#">ZXRE125FFTA</a>	<a href="#">ZXRE125FN8TA</a>
<a href="#">ZXRE160AET5TA</a>	<a href="#">ZXRE160AFT4-7</a>	<a href="#">ZXRE160AH5TA</a>	<a href="#">ZXRE160ET5TA</a>	<a href="#">ZXRE160FT4-7</a>
<a href="#">ZXRE160H5TA</a>	<a href="#">ZXRE250ASA-7</a>	<a href="#">ZXRE250AW5-7</a>	<a href="#">ZXRE250BSA-7</a>	<a href="#">ZXRE250BW5</a>
<a href="#">ZXRE250BW5-7</a>	<a href="#">ZXRE252ASA-7</a>	<a href="#">ZXRE252BSA-7</a>	<a href="#">ZXRE330AV-A</a>	<a href="#">ZXRE4041DFTA</a>