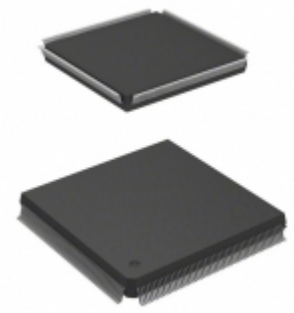


AT91RM9200-QU-002	
Part Number	<a href="#">AT91RM9200-QU-002</a>
Manufacturer	<a href="#">Micrel / Microchip Technology</a>
Description	IC MCU 32BIT 128KB ROM 208QFP
Quantity Available	3000 pcs in stock
Datasheets	
AT91RM9200-QU-002 Price	<a href="#">Request Price &amp; Lead Time Online</a> or Email us: <a href="mailto:Info@ariat-tech.com">Info@ariat-tech.com</a>


[GET A QUOTE](#)

Technical Information of AT91RM9200-QU-002			
Manufacturer Part Number	<a href="#">AT91RM9200-QU-002</a>	Category	<a href="#">Integrated Circuits (ICs)</a>
Manufacturer	<a href="#">Micrel / Microchip Technology</a>	Description	IC MCU 32BIT 128KB ROM 208QFP
Package / Case	Tray	Quantity Available	3000
Series	AT91	Operating Temperature	-40°C ~ 85°C (TA)
Package / Case	208-BFQFP	Supplier Device Package	208-PQFP (28x28)
Peripherals	POR	Core Processor	ARM9®
Speed	180MHz	Number of I/O	122
EEPROM Size	-	RAM Size	48K x 8
Core Size	16/32-Bit	Connectivity	EBI/EMI, Ethernet, I <sup>2</sup> C, Memory Card, SPI, SSC, UART/USART, USB
Program Memory Size	128KB (128K x 8)	Program Memory Type	ROM
Voltage - Supply (Vcc/Vdd)	1.65 V ~ 1.95 V	Data Converters	-
Oscillator Type	Internal	Packaging	Tray

AT91RM9200-QU-002 3000pcs New and Original in Stock, Find AT91RM9200-QU-002 Stock, Datasheet, PDF, Inventory at Ariat-Tech.com Online, Order AT91RM9200-QU-002 Micrel / Microchip Technology with warrantied and confidence. RFQ AT91RM9200-QU-002 : [Info@Ariat-Tech.com](mailto:Info@Ariat-Tech.com)

Related parts for AT91RM9200-QU-002				
Image	Part Number	Description	Manufacturer	Qty
	<a href="#">AT91RM9200-CJ-002</a>	IC MCU 32BIT 128KB ROM 256BGA	Micrel / Microchip Technology	8684 pcs
	<a href="#">AT91RM9200CJ-002</a>	AT91RM9200CJ-002 ATMEL	ATMEL Corporation	8684 pcs
	<a href="#">AT91RM9200CI-002</a>	AT91RM9200CI-002 ARM	ARM	533 pcs
	<a href="#">AT91RM9200-QU</a>	AT91RM9200-QU ATMEL	ATMEL Corporation	219 pcs
	<a href="#">AT91RM9200-QU002</a>	AT91RM9200-QU002 ATMEL	ATMEL Corporation	25 pcs
	<a href="#">AT91RM9200-EK</a>	DEVEL KIT	Micrel / Microchip Technology	500 pcs
	<a href="#">AT91RM9200-DK</a>	KIT DEVELOPMENT AT91RM9200	Micrel / Microchip Technology	500 pcs
	<a href="#">AT91RM9200-CJ-100</a>	AT91RM9200-CJ-100 ATMEL	ATMEL Corporation	4500 pcs
	<a href="#">AT91RM9200-QI-002-T</a>	IC MCU 32BIT 128KB ROM 208QFP	Micrel / Microchip Technology	500 pcs
	<a href="#">AT91RM9200CJ-100</a>	AT91RM9200CJ-100 ATMEL	ATMEL Corporation	2250 pcs
	<a href="#">AT91SAM-ICE</a>	EMULATOR JTAG FOR ARM-BASED MCU	Micrel / Microchip Technology	74 pcs
	<a href="#">AT91S025-A-CU</a>	AT91S025-A-CU ATMEL	ATMEL Corporation	5000 pcs
	<a href="#">AT91S0100</a>	AT91S0100 ATMEL	ATMEL Corporation	495 pcs
	<a href="#">AT91SAM3S</a>	AT91SAM3S ATMEL	ATMEL Corporation	60 pcs
	<a href="#">AT91RM9200-CJ-002(AT91RM9200-CJ)</a>	AT91RM9200-CJ-002(AT91RM9200-CJ) ATMEL	ATMEL Corporation	10 pcs
	<a href="#">AT91RM9200-CJ-101</a>	AT91RM9200-CJ-101 ATMEL	ATMEL Corporation	5000 pcs
	<a href="#">AT91RM9200QU-002</a>	AT91RM9200QU-002 ATMEL	ATMEL Corporation	30 pcs
	<a href="#">AT91S0101</a>	AT91S0101 ATMEL	ATMEL Corporation	24 pcs
	<a href="#">AT91RM9200-QI-002</a>	IC MCU 32BIT 128KB ROM 208QFP	Micrel / Microchip Technology	20 pcs
	<a href="#">AT91RM9200-QU-002</a>	IC MCU 32BIT 128KB ROM 208QFP	Micro Commercial Components (MCC)	3000 pcs

**IC Chips & IGBT Module - Hot Stock Part Number**

<a href="#">AT90S072-028-Z</a>	<a href="#">AT90USB1287-16AU</a>	<a href="#">AT90USB1287-MU</a>	<a href="#">AT90USB162-16MU</a>	<a href="#">AT90USB162EAW-16MU</a>
<a href="#">AT90USB646-MU</a>	<a href="#">AT90USB647-AU</a>	<a href="#">AT90USB647-MU</a>	<a href="#">AT90USB82-16MU</a>	<a href="#">AT90WM3-16MQ</a>
<a href="#">AT91C140-QU-001</a>	<a href="#">AT91FR40162SB-CU</a>	<a href="#">AT91FR4081-33CI</a>	<a href="#">AT91M40400-25AI</a>	<a href="#">AT91M40800-33AU</a>
<a href="#">AT91M42800A-33CI</a>	<a href="#">AT91M42800A-33CJ</a>	<a href="#">AT91M55800A-33CI</a>	<a href="#">AT91R40008-66AI</a>	<a href="#">AT91R40008-66AU</a>
<a href="#">AT91R40807-33AU</a>	<a href="#">AT91RM9200-CJ-002</a>	<a href="#">AT91RM9200-CJ-100</a>	<a href="#">AT91RM9200-CJ-101</a>	<a href="#">AT91RM9200-QU-002</a>
<a href="#">AT91RM9200CI-002</a>	<a href="#">AT91RM9200CJ-002</a>	<a href="#">AT91RM9200CJ-100</a>	<a href="#">AT91S025-A-CU</a>	<a href="#">AT91SAM7L128-AU</a>
<a href="#">AT91SAM7L128-WP15</a>	<a href="#">AT91SAM7S128-AU</a>	<a href="#">AT91SAM7S128-MU</a>	<a href="#">AT91SAM7S256-AU</a>	<a href="#">AT91SAM7S256-AU-001</a>
<a href="#">AT91SAM7S256-MU</a>	<a href="#">AT91SAM7S256C-AU</a>	<a href="#">AT91SAM7S256D-AU</a>	<a href="#">AT91SAM7S32-AU</a>	<a href="#">AT91SAM7S32-AU-001</a>
<a href="#">AT91SAM7S512-AU</a>	<a href="#">AT91SAM7S512-MU</a>	<a href="#">AT91SAM7S64B-AU</a>	<a href="#">AT91SAM7S64C-MU</a>	<a href="#">AT91SAM7S64MU</a>
<a href="#">AT91SAM7S256-AU</a>	<a href="#">AT91SAM7SE32-AU</a>	<a href="#">AT91SAM7SE32-CU-999</a>	<a href="#">AT91SAM7X128-CU</a>	<a href="#">AT91SAM7X128B-AU</a>