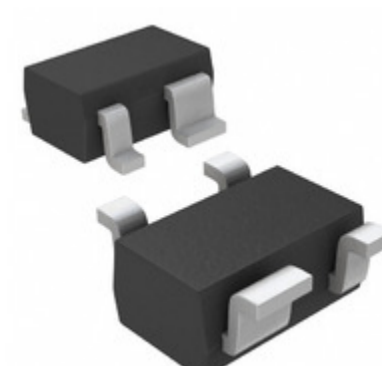


<b>MAX6386XS46D2+T</b>	
Part Number	<a href="#">MAX6386XS46D2+T</a>
Manufacturer	<a href="#">Maxim Integrated</a>
Description	IC MPU/RESET CIRC 4.63V SC70-4
Quantity Available	500 pcs in stock
Datasheets	<a href="#">MAX6386XS46D2+T.pdf</a>
MAX6386XS46D2+T Price	<a href="#">Request Price &amp; Lead Time Online</a> or Email us: <a href="mailto:Info@ariat-tech.com">Info@ariat-tech.com</a>


[GET A QUOTE](#)

Technical Information of MAX6386XS46D2+T			
Manufacturer Part Number	<a href="#">MAX6386XS46D2+T</a>	Category	<a href="#">Integrated Circuits (ICs)</a>
Manufacturer	<a href="#">Maxim Integrated</a>	Description	IC MPU/RESET CIRC 4.63V SC70-4
Package / Case	Tape & Reel (TR)	Quantity Available	500
Voltage - Threshold	4.63V	Type	Simple Reset/Power-On Reset
Supplier Device Package	SC-70-4	Series	-
Reset Timeout	20 ms Minimum	Reset	Active Low
Packaging	Tape & Reel (TR)	Package / Case	SC-82A, SOT-343
Output	Open Drain or Open Collector	Operating Temperature	-40°C ~ 125°C (TA)
Number of Voltages Monitored	1	Mounting Type	Surface Mount

MAX6386XS46D2+T 500pcs New and Original in Stock, Find MAX6386XS46D2+T Stock, Datasheet, PDF, Inventory at Ariat-Tech.com Online, Order MAX6386XS46D2+T Maxim Integrated with warrantied and confidence. RFQ MAX6386XS46D2+T : [Info@Ariat-Tech.com](mailto:Info@Ariat-Tech.com)

Related parts for MAX6386XS46D2+T				
Image	Part Number	Description	Manufacturer	Quantity
	<a href="#">MAX6386XS46D3-T</a>	IC MPU/RESET CIRC 4.63V SC70-4	Maxim Integrated	500 pcs
	<a href="#">MAX6386XS46D3+T</a>	IC MPU/RESET CIRC 4.63V SC70-4	Maxim Integrated	405 pcs
	<a href="#">MAX6387LT23D3+T</a>	IC MPU/RESET CIRC 2.31V 6-UDFN	Maxim Integrated	500 pcs
	<a href="#">MAX6386XS46D1+T</a>	IC MPU/RESET CIRC 4.63V SC70-4	Maxim Integrated	500 pcs
	<a href="#">MAX6386XS31D7+T</a>	IC MPU/RESET CIRC 3.08V SC70-4	Maxim Integrated	500 pcs
	<a href="#">MAX6387LT25D1+T</a>	IC MPU/RESET CIRC 2.50V 6-UDFN	Maxim Integrated	500 pcs
	<a href="#">MAX6386XS31D5+T</a>	IC MPU/RESET CIRC 3.08V SC70-4	Maxim Integrated	500 pcs
	<a href="#">MAX6386XS31D5+</a>	IC MPU/RESET CIRC 3.08V SC70-4	Maxim Integrated	500 pcs
	<a href="#">MAX6387XS16D3+T</a>	IC MPU/RESET CIRC 1.58V SC70-4	Maxim Integrated	303 pcs
	<a href="#">MAX6387LT26D1+T</a>	IC MPU/RESET CIRC 2.63V 6-UDFN	Maxim Integrated	500 pcs
	<a href="#">MAX6387LT33D4+T</a>	IC MPU/RESET CIRC 3.30V 6-UDFN	Maxim Integrated	500 pcs
	<a href="#">MAX6387LT16D3+T</a>	IC MPU/RESET CIRC 1.58V 6-UDFN	Maxim Integrated	500 pcs
	<a href="#">MAX6386XS45D1-T</a>	IC MPU/RESET CIRC 4.50V SC70-4	Maxim Integrated	500 pcs
	<a href="#">MAX6387LT46D4+T</a>	IC MPU/RESET CIRC 4.63V 6-UDFN	Maxim Integrated	500 pcs
	<a href="#">MAX6386XS31D3-T</a>	IC MPU/RESET CIRC 3.08V SC70-4	Maxim Integrated	500 pcs
	<a href="#">MAX6386XS44D3-T</a>	IC MPU/RESET CIRC 4.38V SC70-4	Maxim Integrated	500 pcs
	<a href="#">MAX6386XS46D2-T</a>	IC MPU/RESET CIRC 4.63V SC70-4	Maxim Integrated	500 pcs
	<a href="#">MAX6386XS31D3+T</a>	IC MPU/RESET CIRC 3.08V SC70-4	Maxim Integrated	50 pcs
	<a href="#">MAX6386XS44D3+T</a>	IC MPU/RESET CIRC 4.38V SC70-4	Maxim Integrated	1353 pcs
	<a href="#">MAX6386XS45D3+T</a>	IC MPU/RESET CIRC 4.50V SC70-4	Maxim Integrated	500 pcs

<a href="#">MAX6386XS46D2+T Stock</a>	<a href="#">MAX6386XS46D2+T Price</a>	<a href="#">MAX6386XS46D2+T Electronics</a>	<a href="#">MAX6386XS46D2+T Components</a>
<a href="#">MAX6386XS46D2+T Inventory</a>	<a href="#">MAX6386XS46D2+T Digikey</a>	<a href="#">Supplier MAX6386XS46D2+T</a>	<a href="#">Order MAX6386XS46D2+T Online</a>
<a href="#">Inquiry MAX6386XS46D2+T</a>	<a href="#">MAX6386XS46D2+T Image</a>	<a href="#">MAX6386XS46D2+T Picture</a>	<a href="#">MAX6386XS46D2+T PDF</a>
<a href="#">MAX6386XS46D2+T Datasheet</a>	<a href="#">Download MAX6386XS46D2+T Datasheet</a>	<a href="#">Manufacturer Maxim Integrated</a>	