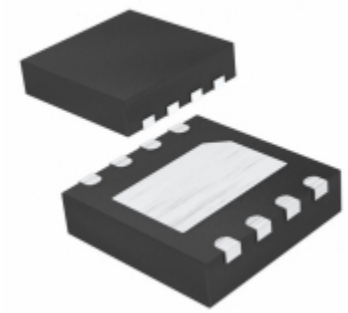


<b>MAX3394EETA+T</b>	
Part Number	<a href="#">MAX3394EETA+T</a>
Manufacturer	<a href="#">Maxim Integrated</a>
Description	IC LVL XLTR LV 6MBPS 8-TDFN
Quantity Available	2500 pcs in stock
Datasheets	<a href="#">MAX3394EETA+T.pdf</a>
MAX3394EETA+T Price	<a href="#">Request Price &amp; Lead Time Online</a> or Email us: <a href="mailto:Info@ariat-tech.com">Info@ariat-tech.com</a>


[GET A QUOTE](#)

Technical Information of MAX3394EETA+T			
Manufacturer Part Number	<a href="#">MAX3394EETA+T</a>	Category	<a href="#">Integrated Circuits (ICs)</a>
Manufacturer	<a href="#">Maxim Integrated</a>	Description	IC LVL XLTR LV 6MBPS 8-TDFN
Package / Case	Tape & Reel (TR)	Quantity Available	2500
Series	-	Operating Temperature	-40°C ~ 85°C (TA)
Mounting Type	Surface Mount	Output Type	Open Drain, Push-Pull, Tri-State
Features	Auto-Direction Sensing, Power Supply Decoupling, Thermal-Shutdown Protection	Package / Case	8-WDFN Exposed Pad
Supplier Device Package	8-TDFN-EP (3x3)	Number of Circuits	1
Data Rate	6Mbps	Input Signal	-
Output Signal	-	Translator Type	Voltage Level
Channel Type	Bidirectional	Channels per Circuit	2
Voltage - VCCA	1.2 V ~ 5.5 V	Voltage - VCCB	1.65 V ~ 5.5 V
Packaging	Tape & Reel (TR)		

MAX3394EETA+T 2500pcs New and Original in Stock, Find MAX3394EETA+T Stock, Datasheet, PDF, Inventory at Ariat-Tech.com Online, Order MAX3394EETA+T Maxim Integrated with warrantied and confidence. RFQ MAX3394EETA+T : [Info@Ariat-Tech.com](mailto:Info@Ariat-Tech.com)

Related parts for MAX3394EETA+T				
Image	Part Number	Description	Manufacturer	Qty
	<a href="#">MAX3395EETC+T</a>	IC LVL XLTR LV 6MBPS 12-TQFN	Maxim Integrated	560 pcs
	<a href="#">MAX3393EEBC+T</a>	IC LEVEL XLATOR 16MBPS UCSP	Maxim Integrated	500 pcs
	<a href="#">MAX3394EEBL+T</a>	IC LVL XLTR LV 6MBPS PP 9-UCSP	Maxim Integrated	2282 pcs
	<a href="#">MAX3391EEUD-T</a>	MAX3391EEUD-T MAXIM	MAXIM	9424 pcs
	<a href="#">MAX3392EEBC-T</a>	MAX3392EEBC-T MAXIM	MAXIM	4890 pcs
	<a href="#">MAX3392EEUD+T</a>	IC LVL XLTR LV 8MBPS 14-TSSOP	Maxim Integrated	528 pcs
	<a href="#">MAX339CEE+</a>	IC MULTIPLEXER DUAL 4X1 16QSOP	Maxim Integrated	58 pcs
	<a href="#">MAX3393EEUD+T</a>	IC LVL XLTR LV 8MBPS 14-TSSOP	Maxim Integrated	500 pcs
	<a href="#">MAX339CPE+</a>	IC MULTIPLEXER DUAL 4X1 16DIP	Maxim Integrated	500 pcs
	<a href="#">MAX3395EEBC+T</a>	IC LVL XLTR LV 6MBPS 12-UCSP	Maxim Integrated	500 pcs
	<a href="#">MAX3397EELA+T</a>	IC LVL XLTR DUAL 8-UDFN	Maxim Integrated	500 pcs
	<a href="#">MAX3392EEBC</a>	MAX3392EEBC MAXIM	MAXIM	827 pcs
	<a href="#">MAX3392EEUD+</a>	IC LVL XLTR LV 8MBPS 14-TSSOP	Maxim Integrated	20 pcs
	<a href="#">MAX3394EEBL+TG45</a>	TRANSLATOR OCTAL BIDIR 8UCSP	Maxim Integrated	500 pcs
	<a href="#">MAX3397EEVKIT+</a>	KIT EVALUATION FOR MAX3397E	Maxim Integrated	500 pcs
	<a href="#">MAX3393EEUD+</a>	IC LVL XLTR LV 8MBPS 14-TSSOP	Maxim Integrated	500 pcs
	<a href="#">MAX339CEE+T</a>	IC MULTIPLEXER DUAL 4X1 16QSOP	Maxim Integrated	500 pcs
	<a href="#">MAX339CEE</a>	MAX339CEE MAXIM	MAXIM	2505 pcs
	<a href="#">MAX339CPE</a>	IC MUX 8CH DUAL 4CH PDIP	Maxim Integrated	500 pcs
	<a href="#">MAX3395EETC+</a>	IC LVL XLTR LV 6MBPS 12-TQFN	Maxim Integrated	2500 pcs

**IC Chips & IGBT Module - Hot Stock Part Number**

<a href="#">MAX3386ECPWRG4</a>	<a href="#">MAX3386ECUP</a>	<a href="#">MAX3386ECUP+T</a>	<a href="#">MAX3386ECUP-T</a>	<a href="#">MAX3386EELUP</a>
<a href="#">MAX3386EEUP+T</a>	<a href="#">MAX3386EIPW</a>	<a href="#">MAX3386EIPWR</a>	<a href="#">MAX3386EIPWRG4</a>	<a href="#">MAX3387ECUG</a>
<a href="#">MAX3387ECUG+</a>	<a href="#">MAX3387ECUG+T</a>	<a href="#">MAX3387EEUG</a>	<a href="#">MAX3387EEUG+</a>	<a href="#">MAX3387EEUG+T</a>
<a href="#">MAX3389ECUG</a>	<a href="#">MAX3389ECUG+T</a>	<a href="#">MAX3389ECUG-T</a>	<a href="#">MAX338CSE</a>	<a href="#">MAX338ESE</a>
<a href="#">MAX3391EEUD-T</a>	<a href="#">MAX3392EEBC</a>	<a href="#">MAX3392EEBC-T</a>	<a href="#">MAX3392EEUD+T</a>	<a href="#">MAX3394EEBL+T</a>
<a href="#">MAX3395EETC+T</a>	<a href="#">MAX339CEE</a>	<a href="#">MAX339CSE</a>	<a href="#">MAX339ESE</a>	<a href="#">MAX339ESE+</a>
<a href="#">MAX339ETE</a>	<a href="#">MAX3421EETJ+T</a>	<a href="#">MAX3430CPA</a>	<a href="#">MAX3430CPA+</a>	<a href="#">MAX3430CSA</a>
<a href="#">MAX3430CSA+T</a>	<a href="#">MAX3430ESA</a>	<a href="#">MAX3430ESA+</a>	<a href="#">MAX3430ESA+T</a>	<a href="#">MAX34405AEZT+T</a>
<a href="#">MAX34405BEZT+</a>	<a href="#">MAX34405BEZT+T</a>	<a href="#">MAX34406HETG+</a>	<a href="#">MAX34406HETG+T</a>	<a href="#">MAX3440EESA</a>
<a href="#">MAX3440EESA+T</a>	<a href="#">MAX34411ETG+T</a>	<a href="#">MAX3441EESA</a>	<a href="#">MAX3442EESA+</a>	<a href="#">MAX3442EESA+T</a>

Electronics Components Distributor – IC Chips &amp; IGBT Module Supplier.

 RFQ Email: [Info@ariat-tech.com](mailto:Info@ariat-tech.com) Website: <https://www.ariat-tech.com>

Copyright Notice © 1996-2019 ARIAT TECHNOLOGY LIMITED. All rights reserved.