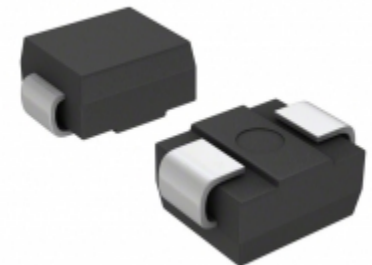


|                        |   |
|------------------------|---|
| <b>P6SMB250AHE3_AI</b> |   |
| Part Number            | <a href="#">P6SMB250AHE3_AI</a>   |
| Manufacturer           | <a href="#">Electro-Films (EFI) / Vishay</a>  |
| Description            | TVS DIODE 214V 344V DO214AA   |
| Quantity Available     | 500 pcs in stock  |
| Datasheets             |   |
| P6SMB250AHE3_AI Price  | <a href="#">Request Price &amp; Lead Time Online</a><br>or Email us: <a href="mailto:Info@ariat-tech.com">Info@ariat-tech.com</a> |


[GET A QUOTE](#)

| Technical Information of P6SMB250AHE3_AI |  |                                  |                                    |
|--|--|----------------------------------|------------------------------------|
| Manufacturer Part Number                 | <a href="#">P6SMB250AHE3_AI</a>              | Category                         | <a href="#">Circuit Protection</a> |
| Manufacturer                             | <a href="#">Electro-Films (EFI) / Vishay</a> | Description                      | TVS DIODE 214V 344V DO214AA        |
| Package / Case                           | Tape & Box (TB)                              | Quantity Available               | 500                                |
| Voltage - Reverse Standoff (Typ)         | 214V   | Voltage - Clamping (Max) @ Ipp   | 344V                               |
| Voltage - Breakdown (Min)                | 237V   | Unidirectional Channels          | 1                                  |
| Type                                     | Zener  | Supplier Device Package          | DO-214AA (SMBJ)                    |
| Series                                   | Automotive, AEC-Q101, P6SMB, TransZorb®      | Power Line Protection            | No                                 |
| Power - Peak Pulse                       | 600W   | Packaging                        | Tape & Box (TB)                    |
| Package / Case                           | DO-214AA, SMB                                | Operating Temperature            | -65°C ~ 150°C (TJ)                 |
| Mounting Type                            | Surface Mount                                | Moisture Sensitivity Level (MSL) | 1 (Unlimited)                      |
| Manufacturer Standard Lead Time          | 41 Weeks                                     | Lead Free Status / RoHS Status   | Lead free / RoHS Compliant         |
| Current - Peak Pulse (10/1000µs)         | 1.74A  | Capacitance @ Frequency          | -                                  |
| Applications                             | Automotive                                   |                                  |                                    |

P6SMB250AHE3\_AI 500pcs New and Original in Stock, Find P6SMB250AHE3\_AI Stock, Datasheet, PDF, Inventory at Ariat-Tech.com Online, Order P6SMB250AHE3\_AI Electro-Films (EFI) / Vishay with warrantied and confidence. RFQ P6SMB250AHE3\_AI : [Info@Ariat-Tech.com](mailto:Info@Ariat-Tech.com)

| Related parts for P6SMB250AHE3_AI |                                  |                                 |                                      |           |
|-----------------------------------|----------------------------------|---------------------------------|--------------------------------------|-----------|
| Image                             | Part Number                      | Description                     | Manufacturer                         | Quantity  |
|                                   | <a href="#">P6SMB250CA</a>       | TVS DIODE 214VWM 344VC SMD      | Littelfuse Inc.                      | 28750 pcs |
|                                   | <a href="#">P6SMB250CA-E3/52</a> | P6SMB250CA-E3/52 VISHAY         | VISHAY                               | 8840 pcs  |
|                                   | <a href="#">P6SMB26CA</a>        | P6SMB26CA PANJIT                | PANJIT                               | 300 pcs   |
|                                   | <a href="#">P6SMB250AHE3_AI</a>  | TVS DIODE 214VWM 344VC DO-214AA | Vishay Semiconductor Diodes Division | 500 pcs   |
|                                   | <a href="#">P6SMB250C</a>        | TVS DIODE 214VWM 361.2VC SMD    | Littelfuse Inc.                      | 500 pcs   |
|                                   | <a href="#">P6SMB250CA</a>       | TVS DIODE 214VWM 344VC DO214AA  | Bourns Inc.                          | 500 pcs   |
|                                   | <a href="#">P6SMB250A-M3/52</a>  | TVS DIODE 214V 344V DO214AA     | Electro-Films (EFI) / Vishay         | 500 pcs   |
|                                   | <a href="#">P6SMB250A-E3/52</a>  | TVS DIODE 214V 344V DO214AA     | Electro-Films (EFI) / Vishay         | 1500 pcs  |
|                                   | <a href="#">P6SMB250A-M3/5B</a>  | TVS DIODE 214V 344V DO214AA     | Electro-Films (EFI) / Vishay         | 500 pcs   |
|                                   | <a href="#">P6SMB250A-E3/5B</a>  | TVS DIODE 214V 344V DO214AA     | Electro-Films (EFI) / Vishay         | 500 pcs   |
|                                   | <a href="#">P6SMB250A-E3/52</a>  | TVS DIODE 214VWM 344VC SMB      | Vishay Semiconductor Diodes Division | 1500 pcs  |
|                                   | <a href="#">P6SMB250AHE3_AIH</a> | TVS DIODE 214VWM 344VC SMB      | Vishay Semiconductor Diodes Division | 500 pcs   |
|                                   | <a href="#">P6SMB250AHE3_ALL</a> | TVS DIODE 214VWM 344VC SMB      | Vishay Semiconductor Diodes Division | 500 pcs   |
|                                   | <a href="#">P6SMB250A-M3/52</a>  | TVS DIODE 214VWM 344VC DO-214AA | Vishay Semiconductor Diodes Division | 500 pcs   |
|                                   | <a href="#">P6SMB250AHE3_A/H</a> | TVS DIODE 214VWM 344VC DO-214AA | Vishay Semiconductor Diodes Division | 500 pcs   |
|                                   | <a href="#">P6SMB250A-M3/5B</a>  | TVS DIODE 214VWM 344VC DO-214AA | Vishay Semiconductor Diodes Division | 500 pcs   |
|                                   | <a href="#">P6SMB250AHE3_AIH</a> | TVS DIODE 214V 344V DO214AA     | Electro-Films (EFI) / Vishay         | 500 pcs   |
|                                   | <a href="#">P6SMB250AHE3_A/H</a> | TVS DIODE 214V 344V DO214AA     | Electro-Films (EFI) / Vishay         | 500 pcs   |
|                                   | <a href="#">P6SMB250AHE3_ALL</a> | TVS DIODE 214V 344V DO214AA     | Electro-Films (EFI) / Vishay         | 500 pcs   |
|                                   | <a href="#">P6SMB250A-E3/5B</a>  | TVS DIODE 214VWM 344VC SMB      | Vishay Semiconductor Diodes Division | 500 pcs   |

|   |  |   |  |
|---|--|---|--|
| <a href="#">P6SMB250AHE3_AI Stock</a>     | <a href="#">P6SMB250AHE3_AI Price</a>              | <a href="#">P6SMB250AHE3_AI Electronics</a>               | <a href="#">P6SMB250AHE3_AI Components</a>   |
| <a href="#">P6SMB250AHE3_AI Inventory</a> | <a href="#">P6SMB250AHE3_AI Digikey</a>            | <a href="#">Supplier P6SMB250AHE3_AI</a>                  | <a href="#">Order P6SMB250AHE3_AI Online</a> |
| <a href="#">Inquiry P6SMB250AHE3_AI</a>   | <a href="#">P6SMB250AHE3_AI Image</a>              | <a href="#">P6SMB250AHE3_AI Picture</a>                   | <a href="#">P6SMB250AHE3_AI PDF</a>          |
| <a href="#">P6SMB250AHE3_AI Datasheet</a> | <a href="#">Download P6SMB250AHE3_AI Datasheet</a> | <a href="#">Manufacturer Electro-Films (EFI) / Vishay</a> |  |