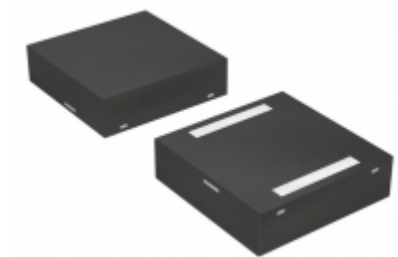


P2600Q12BLRP	
Part Number	<a href="#">P2600Q12BLRP</a>
Manufacturer	<a href="#">Hamlin / Littelfuse</a>
Description	SIDACTOR BI 300V 250A QFN SMD
Quantity Available	4990 pcs in stock
Datasheets	
P2600Q12BLRP Price	<a href="#">Request Price &amp; Lead Time Online</a> or Email us: <a href="mailto:Info@ariat-tech.com">Info@ariat-tech.com</a>


[GET A QUOTE](#)

Technical Information of P2600Q12BLRP			
Manufacturer Part Number	<a href="#">P2600Q12BLRP</a>	Category	<a href="#">Circuit Protection</a>
Manufacturer	<a href="#">Hamlin / Littelfuse</a>	Description	SIDACTOR BI 300V 250A QFN SMD
Package / Case	Tape & Reel (TR)	Quantity Available	4990
Series	SIDACTor®	Mounting Type	Surface Mount
Capacitance	35pF	Package / Case	2-TDFN
Current - Peak Pulse (10/1000µs)	80A	Voltage - Breakover	300V
Voltage - Off State	220V	Current - Peak Pulse (8/20µs)	250A
Current - Hold (Ih)	150mA	Number of Elements	1
Voltage - On State	5V	Packaging	Tape & Reel (TR)

P2600Q12BLRP 4990pcs New and Original in Stock, Find P2600Q12BLRP Stock, Datasheet, PDF, Inventory at Ariat-Tech.com Online, Order P2600Q12BLRP Hamlin / Littelfuse with warrantied and confidence. RFQ P2600Q12BLRP : [Info@Ariat-Tech.com](mailto:Info@Ariat-Tech.com)

Related parts for P2600Q12BLRP				
Image	Part Number	Description	Manufacturer	Qty
	<a href="#">P2600Q12ALRP</a>	SIDACTOR BI 300V 150A QFN SMD	<a href="#">Hamlin / Littelfuse</a>	500 pcs
	<a href="#">P2600ECMCRP1</a>	SIDAC MC BI 220V 400A TO-92	<a href="#">Hamlin / Littelfuse</a>	500 pcs
	<a href="#">P2600SB</a>	P2600SB LITTELFUS	LITTELFUS	20000 pcs
	<a href="#">P2600ECRP1</a>	SIDACTOR BI 220V 400A TO-92	<a href="#">Hamlin / Littelfuse</a>	500 pcs
	<a href="#">P2600SA RP</a>	P2600SA RP Original	Original	22000 pcs
	<a href="#">P2600SALRP</a>	SIDACTOR BI 220V 150A DO-214AA	<a href="#">Hamlin / Littelfuse</a>	13050 pcs
	<a href="#">P2600ECRP2</a>	SIDACTOR BI 220V 400A TO-92	<a href="#">Hamlin / Littelfuse</a>	500 pcs
	<a href="#">P2600SAL</a>	P2600SAL LITTELFUSE	<a href="#">Hamlin / Littelfuse</a>	15000 pcs
	<a href="#">P2600SA-L</a>	P2600SA-L Littelfuse	<a href="#">Hamlin / Littelfuse</a>	6000 pcs
	<a href="#">P2600S1ALRP</a>	SIDACTOR BI 220V 150A DO214AC	<a href="#">Hamlin / Littelfuse</a>	85000 pcs
	<a href="#">P2600EDL</a>	P2600EDL LITTELFUS	LITTELFUS	20000 pcs
	<a href="#">P2600S1BLRP</a>	SIDACTOR BI 220V 50A DO214 2L	<a href="#">Hamlin / Littelfuse</a>	500 pcs
	<a href="#">P2600GBLRP</a>	SIDACTOR BI 220V 80A DO15	<a href="#">Hamlin / Littelfuse</a>	500 pcs
	<a href="#">P2600ECMCRP2</a>	SIDAC MC BI 220V 400A TO-92	<a href="#">Hamlin / Littelfuse</a>	500 pcs
	<a href="#">P2600FNLYP</a>	SIDACTOR BI 220V 3KA TO262M	<a href="#">Hamlin / Littelfuse</a>	500 pcs
	<a href="#">P2600Q22CLRP</a>	SIDACTOR BI 300V 400A QFN SMD	<a href="#">Hamlin / Littelfuse</a>	500 pcs
	<a href="#">P2600SA</a>	SIDACTOR BI 220V 150A DO-214AA	<a href="#">Hamlin / Littelfuse</a>	45000 pcs
	<a href="#">P2600GALRP</a>	SIDACTOR BI 220V 50A DO15	<a href="#">Hamlin / Littelfuse</a>	500 pcs
	<a href="#">P2600FNLTP</a>	SIDACTOR BI 220V 3KA TO262M	<a href="#">Hamlin / Littelfuse</a>	225 pcs
	<a href="#">P2600SARP</a>	SIDACTOR 220V SURGE SUP SMD	<a href="#">Hamlin / Littelfuse</a>	4683 pcs

**IC Chips & IGBT Module - Hot Stock Part Number**

<a href="#">04025U3R3BAT2A</a>	<a href="#">ADUM1411ARWZ</a>	<a href="#">AM29F080B-90EF</a>	<a href="#">AT1203-15X-GRE</a>	<a href="#">B160-E3/5AT</a>
<a href="#">DD200F40</a>	<a href="#">EL1517LZ-T7</a>	<a href="#">EL5102WZ-T7</a>	<a href="#">GCM31ML81H334KA37L</a>	<a href="#">GP100AK6TR-G1</a>
<a href="#">GRM1886P1H3R7CZ01D</a>	<a href="#">IP-J04-EZ</a>	<a href="#">IXSN35N100AU1</a>	<a href="#">MAX6802UR29D3+T</a>	<a href="#">NUF2221W1T2</a>
<a href="#">P2600BA70</a>	<a href="#">P2600EAL</a>	<a href="#">P2600EARP</a>	<a href="#">P2600EBL</a>	<a href="#">P2600EBRP</a>
<a href="#">P2600ECL</a>	<a href="#">P2600EDL</a>	<a href="#">P2600S1ALRP</a>	<a href="#">P2600SA-L</a>	<a href="#">P2600SAL</a>
<a href="#">P2600SALRP</a>	<a href="#">P2600SB-L</a>	<a href="#">P2600SBL</a>	<a href="#">P2600SBLRP</a>	<a href="#">P2600SBRP</a>
<a href="#">P2600SC-L</a>	<a href="#">P2600SCL</a>	<a href="#">P2600SCLRP</a>	<a href="#">P2600SCMCL</a>	<a href="#">P2600SCMCLRP</a>
<a href="#">P2600SCMCRP</a>	<a href="#">P2600SCRCP</a>	<a href="#">P2600SDL</a>	<a href="#">P2600SDLRP</a>	<a href="#">PCM3001EG/2K</a>
<a href="#">R9G21015</a>	<a href="#">SAB8288AP</a>	<a href="#">SMDA12C-8.TB</a>	<a href="#">SML4746A-E3/61</a>	<a href="#">SN65C3243PW</a>
<a href="#">TMP275AIDGKR</a>	<a href="#">VI-254-EU</a>	<a href="#">VI-2W1-CU</a>	<a href="#">WRE1209S-1W</a>	<a href="#">ZXTP08400BFF</a>

Electronics Components Distributor – IC Chips & IGBT Module Supplier.

RFQ Email: [Info@ariat-tech.com](mailto:Info@ariat-tech.com) Website: <https://www.ariat-tech.com>

Copyright Notice © 1996-2019 ARIAT TECHNOLOGY LIMITED. All rights reserved.