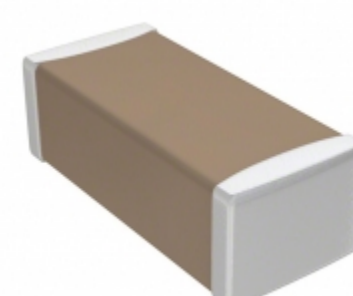


| | |
|---------------------------|--|
| C1608CH2A090D080AA | |
| Part Number | C1608CH2A090D080AA |
| Manufacturer | TDK Corporation |
| Description | CAP CER 9PF 100V CH 0603 |
| Quantity Available | 500 pcs in stock |
| Datasheets | |
| C1608CH2A090D080AA Price | Request Price & Lead Time Online or Email us: Info@ariat-tech.com |



[GET A QUOTE](#)

| Technical Information of C1608CH2A090D080AA | | | |
|---|------------------------------------|-------------------------|---------------------------------------|
| Manufacturer Part Number | C1608CH2A090D080AA | Category | Capacitors |
| Manufacturer | TDK Corporation | Description | CAP CER 9PF 100V CH 0603 |
| Package / Case | Tape & Reel (TR) | Quantity Available | 500 |
| Series | C | Voltage - Rated | 100V |
| Operating Temperature | -25°C ~ 85°C | Ratings | - |
| Mounting Type | Surface Mount, MLCC | Size / Dimension | 0.063" L x 0.031" W (1.60mm x 0.80mm) |
| Height - Seated (Max) | - | Features | - |
| Capacitance | 9pF | Tolerance | ±0.5pF |
| Applications | General Purpose | Lead Spacing | - |
| Package / Case | 0603 (1608 Metric) | Temperature Coefficient | CH |
| Thickness (Max) | 0.035" (0.90mm) | Lead Style | - |
| Failure Rate | - | Packaging | Tape & Reel (TR) |

C1608CH2A090D080AA 500pcs New and Original in Stock, Find C1608CH2A090D080AA Stock, Datasheet, PDF, Inventory at Ariat-Tech.com Online, Order C1608CH2A090D080AA TDK Corporation with warrantied and confidence. RFQ C1608CH2A090D080AA : Info@Ariat-Tech.com

| Related parts for C1608CH2A090D080AA | | | | |
|--------------------------------------|------------------------------------|------------------------------|-----------------|---------|
| Image | Part Number | Description | Manufacturer | Qty |
| | C1608CH2A121J080AA | CAP CER 120PF 100V CH 0603 | TDK Corporation | 500 pcs |
| | C1608CH2A100D080AA | CAP CER 10PF 100V CH 0603 | TDK Corporation | 500 pcs |
| | C1608CH2A050C080AA | CAP CER 5PF 100V CH 0603 | TDK Corporation | 500 pcs |
| | C1608CH2A080D080AA | CAP CER 8PF 100V CH 0603 | TDK Corporation | 500 pcs |
| | C1608CH2A121K080AA | CAP CER 120PF 100V CH 0603 | TDK Corporation | 500 pcs |
| | C1608CH2A101K080AA | CAP CER 100PF 100V CH 0603 | TDK Corporation | 500 pcs |
| | C1608CH2A060D080AA | CAP CER 6PF 100V CH 0603 | TDK Corporation | 500 pcs |
| | C1608CH2A103J080AC | CAP CER 10000PF 100V CH 0603 | TDK Corporation | 500 pcs |
| | C1608CH2A103K080AC | CAP CER 10000PF 100V CH 0603 | TDK Corporation | 500 pcs |
| | C1608CH2A101J080AA | CAP CER 100PF 100V CH 0603 | TDK Corporation | 500 pcs |
| | C1608CH2A070D080AA | CAP CER 7PF 100V CH 0603 | TDK Corporation | 500 pcs |
| | C1608CH2A102J080AA | CAP CER 1000PF 100V CH 0603 | TDK Corporation | 500 pcs |
| | C1608CH1V183J080AC | CAP CER 0.018UF 35V CH 0603 | TDK Corporation | 500 pcs |
| | C1608CH2A030C080AA | CAP CER 3PF 100V CH 0603 | TDK Corporation | 500 pcs |
| | C1608CH2A040C080AA | CAP CER 4PF 100V CH 0603 | TDK Corporation | 500 pcs |
| | C1608CH2A102K080AA | CAP CER 1000PF 100V CH 0603 | TDK Corporation | 500 pcs |
| | C1608CH2A020C080AA | CAP CER 2PF 100V CH 0603 | TDK Corporation | 500 pcs |
| | C1608CH2A120J080AA | CAP CER 12PF 100V CH 0603 | TDK Corporation | 500 pcs |
| | C1608CH2A010C080AA | CAP CER 1PF 100V CH 0603 | TDK Corporation | 500 pcs |
| | C1608CH1V183K080AC | CAP CER 0.018UF 35V CH 0603 | TDK Corporation | 500 pcs |

IC Chips & IGBT Module - Hot Stock Part Number

| | | | | |
|------------------------------------|------------------------------------|------------------------------------|------------------------------------|------------------------------------|
| C1608CH1H680J080AA | C1608CH1H681J080AA | C1608CH1H681JT000N | C1608CH1H681K080AA | C1608CH1H682J080AA |
| C1608CH1H682K080AA | C1608CH1H820J080AA | C1608CH1H821J080AA | C1608CH1H821K080AA | C1608CH1H822J080AA |
| C1608CH1H822J080AA | C1608CH1H822K080AA | C1608CH1HR75C080AA | C1608CH1V103J080AC | C1608CH1V153J080AC |
| C1608CH1V153J080AC | C1608CH1V183J080AC | C1608CH2A010C080AA | C1608CH2A020C080AA | C1608CH2A030C080AA |
| C1608CH2A040C080AA | C1608CH2A050C080AA | C1608CH2A060D080AA | C1608CH2A070D080AA | C1608CH2A080D080AA |
| C1608CH2A100D080AA | C1608CH2A101J080AA | C1608CH2A101K080AA | C1608CH2A102J080AA | C1608CH2A102K080AA |
| C1608CH2A103J080AC | C1608CH2A103K080AC | C1608CH2A120J080AA | C1608CH2A121J080AA | C1608CH2A121K080AA |
| C1608CH2A122J080AA | C1608CH2A122K080AA | C1608CH2A150J080AA | C1608CH2A151J080AA | C1608CH2A151K080AA |
| C1608CH2A152J080AA | C1608CH2A152K080AA | C1608CH2A180J080AA | C1608CH2A181J080AA | C1608CH2A181K080AA |
| C1608CH2A182J080AA | C1608CH2A182K080AA | C1608CH2A1R5C080AA | C1608CH2A220J080AA | C1608CH2A221J080AA |