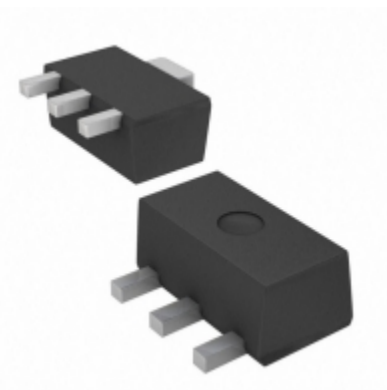


<b>AP7365-18YG-13</b>	
Part Number	<a href="#">AP7365-18YG-13</a>
Manufacturer	<a href="#">Diodes Incorporated</a>
Description	IC REG LDO 1.8V 0.6A SOT89-3
Quantity Available	2500 pcs in stock
Datasheets	<a href="#">AP7365-18YG-13.pdf</a>
AP7365-18YG-13 Price	<a href="#">Request Price &amp; Lead Time Online</a> or Email us: <a href="mailto:Info@ariat-tech.com">Info@ariat-tech.com</a>


[GET A QUOTE](#)

Technical Information of AP7365-18YG-13			
Manufacturer Part Number	<a href="#">AP7365-18YG-13</a>	Category	<a href="#">Integrated Circuits (ICs)</a>
Manufacturer	<a href="#">Diodes Incorporated</a>	Description	IC REG LDO 1.8V 0.6A SOT89-3
Package / Case	Tape & Reel (TR)	Quantity Available	2500
Series	-	Operating Temperature	-40°C ~ 85°C
Mounting Type	Surface Mount	Voltage - Input	2 V ~ 6 V
Package / Case	TO-243AA	Supplier Device Package	SOT-89-3
Voltage - Output	1.8V	Current - Output	600mA
Regulator Topology	Positive Fixed	Voltage - Dropout (Typical)	-
Number of Regulators	1	Current - Limit (Min)	800mA
Packaging	Tape & Reel (TR)		

AP7365-18YG-13 2500pcs New and Original in Stock, Find AP7365-18YG-13 Stock, Datasheet, PDF, Inventory at Ariat-Tech.com Online, Order AP7365-18YG-13 Diodes Incorporated with warrantied and confidence. RFQ AP7365-18YG-13 : [Info@Ariat-Tech.com](mailto:Info@Ariat-Tech.com)

Related parts for AP7365-18YG-13				
Image	Part Number	Description	Manufacturer	Qty
	<a href="#">AP7365-20WG-7</a>	IC REG LDO 2V 0.6A SOT-25	Diodes Incorporated	9000 pcs
	<a href="#">AP7365-15YRG-13</a>	IC REG LDO 1.5V 0.6A SOT89-3	Diodes Incorporated	9000 pcs
	<a href="#">AP7365-15WG-7</a>	IC REG LDO 1.5V 0.6A SOT-25	Diodes Incorporated	12000 pcs
	<a href="#">AP7365-18YRG-13</a>	IC REG LDO 1.8V 0.6A SOT89-3	Diodes Incorporated	9930 pcs
	<a href="#">AP7365-18ERG-13</a>	IC REG LDO 1.8V 0.6A SOT223-3	Diodes Incorporated	5800 pcs
	<a href="#">AP7365-15SNG-7</a>	IC REG LDO 1.5V 0.6A DFN2020-6	Diodes Incorporated	3000 pcs
	<a href="#">AP7365-20EG-13</a>	IC REG LDO 2V 0.6A SOT-2233L	Diodes Incorporated	5000 pcs
	<a href="#">AP7365-15EG-13</a>	IC REG LDO 1.5V 0.6A SOT223-3	Diodes Incorporated	15000 pcs
	<a href="#">AP7365-20SNG-7</a>	IC REG LDO 2V 0.6A DFN2020-6	Diodes Incorporated	15000 pcs
	<a href="#">AP7365-18WG-7</a>	IC REG LDO 1.8V 0.6A SOT-25	Diodes Incorporated	33902 pcs
	<a href="#">AP7365-20ERG-13</a>	IC REG LDO 2V 0.6A SOT-2233L	Diodes Incorporated	9000 pcs
	<a href="#">AP7365-25SNG-7</a>	IC REG LDO 2.5V 0.6A DFN2020-6	Diodes Incorporated	6000 pcs
	<a href="#">AP7365-25EG-13</a>	IC REG LDO 2.5V 0.6A SOT-2233L	Diodes Incorporated	500 pcs
	<a href="#">AP7365-25ERG-13</a>	IC REG LDO 2.5V 0.6A SOT-2233L	Diodes Incorporated	5488 pcs
	<a href="#">AP7365-20YRG-13</a>	IC REG LDO 2V 0.6A SOT-893L	Diodes Incorporated	5000 pcs
	<a href="#">AP7365-18EG-13</a>	IC REG LDO 1.8V 0.6A SOT223-3	Diodes Incorporated	4500 pcs
	<a href="#">AP7365-15YG-13</a>	IC REG LDO 1.5V 0.6A SOT89-3	Diodes Incorporated	10764 pcs
	<a href="#">AP7365-15ERG-13</a>	IC REG LDO 1.5V 0.6A SOT223-3	Diodes Incorporated	9000 pcs
	<a href="#">AP7365-20YG-13</a>	IC REG LDO 2V 0.6A SOT-893L	Diodes Incorporated	2500 pcs
	<a href="#">AP7365-18SNG-7</a>	IC REG LDO 1.8V 0.6A DFN2020-6	Diodes Incorporated	15000 pcs

**IC Chips & IGBT Module - Hot Stock Part Number**

<a href="#">AP7363-33E-13</a>	<a href="#">AP7365-08SNG-7</a>	<a href="#">AP7365-08WG-7</a>	<a href="#">AP7365-08YG-13</a>	<a href="#">AP7365-08YRG-13</a>
<a href="#">AP7365-10EG-13</a>	<a href="#">AP7365-10ERG-13</a>	<a href="#">AP7365-10EVG-13</a>	<a href="#">AP7365-10WG-7</a>	<a href="#">AP7365-10YG-13</a>
<a href="#">AP7365-10YRG-13</a>	<a href="#">AP7365-12EG-13</a>	<a href="#">AP7365-12ERG-13</a>	<a href="#">AP7365-12WG-7</a>	<a href="#">AP7365-12YG-13</a>
<a href="#">AP7365-12YRG-13</a>	<a href="#">AP7365-15EG-13</a>	<a href="#">AP7365-15ERG-13</a>	<a href="#">AP7365-15SNG-7</a>	<a href="#">AP7365-15WG-7</a>
<a href="#">AP7365-15YG-13</a>	<a href="#">AP7365-15YRG-13</a>	<a href="#">AP7365-18EG-13</a>	<a href="#">AP7365-18SNG-7</a>	<a href="#">AP7365-18WG-7</a>
<a href="#">AP7365-18YRG-13</a>	<a href="#">AP7365-20EG-13</a>	<a href="#">AP7365-20ERG-13</a>	<a href="#">AP7365-20SNG-7</a>	<a href="#">AP7365-20WG-7</a>
<a href="#">AP7365-20YG-13</a>	<a href="#">AP7365-20YRG-13</a>	<a href="#">AP7365-25WG-7</a>	<a href="#">AP7365-25YRG-13</a>	<a href="#">AP7365-28EG-13</a>
<a href="#">AP7365-28ERG-13</a>	<a href="#">AP7365-28WG-7</a>	<a href="#">AP7365-28YRG-13</a>	<a href="#">AP7365-30EG-13</a>	<a href="#">AP7365-30ERG-13</a>
<a href="#">AP7365-30SNG-7</a>	<a href="#">AP7365-30WG-7</a>	<a href="#">AP7365-30YG-13</a>	<a href="#">AP7365-30YRG-13</a>	<a href="#">AP7365-33ERG-13</a>
<a href="#">AP7365-33EVG-13</a>	<a href="#">AP7365-33WG-7</a>	<a href="#">AP7365-33YG-13</a>	<a href="#">AP7365-33YRG-13</a>	<a href="#">AP7365-39EG-13</a>