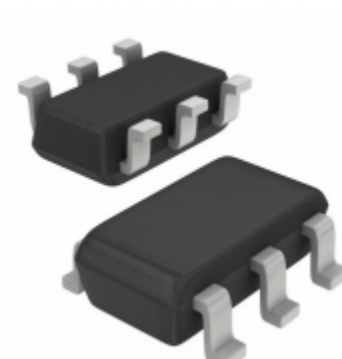


<b>AP3783RAK6TR-G1</b>	
Part Number	<a href="#">AP3783RAK6TR-G1</a>
Manufacturer	<a href="#">Diodes Incorporated</a>
Description	IC REG CTRLR AC/DC GEN3 SOT26
Quantity Available	6428 pcs in stock
Datasheets	<a href="#">AP3783RAK6TR-G1.pdf</a>
AP3783RAK6TR-G1 Price	<a href="#">Request Price &amp; Lead Time Online</a> or Email us: <a href="mailto:Info@ariat-tech.com">Info@ariat-tech.com</a>


[GET A QUOTE](#)

Technical Information of AP3783RAK6TR-G1			
Manufacturer Part Number	<a href="#">AP3783RAK6TR-G1</a>	Category	<a href="#">Integrated Circuits (ICs)</a>
Manufacturer	<a href="#">Diodes Incorporated</a>	Description	IC REG CTRLR AC/DC GEN3 SOT26
Package / Case	Tape & Reel (TR)	Quantity Available	6428
Series	-	Operating Temperature	-40°C ~ 150°C (TJ)
Mounting Type	Surface Mount	Package / Case	SOT-23-6
Supplier Device Package	SOT-26	Voltage - Breakdown	-
Power (Watts)	-	Internal Switch(s)	No
Frequency - Switching	80kHz	Voltage - Supply (Vcc/Vdd)	6.8 V ~ 35 V
Output Isolation	Isolated	Topology	Flyback
Voltage - Start Up	15.5V	Duty Cycle	-
Fault Protection	Over Temperature, Over Voltage, Short Circuit	Control Features	-
Packaging	Tape & Reel (TR)		

AP3783RAK6TR-G1 6428pcs New and Original in Stock. Find AP3783RAK6TR-G1 Stock, Datasheet, PDF, Inventory at Ariat-Tech.com Online. Order AP3783RAK6TR-G1 Diodes Incorporated with warrantied and confidence. RFQ AP3783RAK6TR-G1 : [Info@Ariat-Tech.com](mailto:Info@Ariat-Tech.com)

Related parts for AP3783RAK6TR-G1				
Image	Part Number	Description	Manufacturer	Qty
	<a href="#">AP3772HCK6TR-G1</a>	AP3772HCK6TR-G1 BCD	BCD	63000 pcs
	<a href="#">AP3772HCK6TR-GA</a>	AP3772HCK6TR-GA BCD	BCD	75000 pcs
	<a href="#">AP3800TT/C1</a>	AP3800TT/C1 PHILIPS	PHILIPS	974 pcs
	<a href="#">AP3785TM-G1</a>	AP3785TM-G1 DIODES	Digital View Inc.	2180 pcs
	<a href="#">AP3772TK6TR-G1</a>	AP3772TK6TR-G1 BCD	BCD	20000 pcs
	<a href="#">AP3776MTR-G1</a>	IC REG CTRLR AC/DC GEN3 8SOIC	Diodes Incorporated	500 pcs
	<a href="#">AP3783BK6TR-G1</a>	IC REG CTRLR AC/DC GEN3 SOT26	Diodes Incorporated	3000 pcs
	<a href="#">AP3785TEV1</a>	EVAL BOARD FOR AP3785T	Diodes Incorporated	5 pcs
	<a href="#">AP3785TMTR-G1</a>	IC REG CONTROLLER	Diodes Incorporated	400 pcs
	<a href="#">AP3772HCK6TR-GA-2</a>	IC REG CTRLR AC/DC GEN3	Diodes Incorporated	500 pcs
	<a href="#">AP3783RBK6TR-G1</a>	IC REG CTRLR AC/DC GEN3 SOT26	Diodes Incorporated	500 pcs
	<a href="#">AP3772HBK6TR-G1-2</a>	IC REG CTRLR AC/DC GEN3	Diodes Incorporated	15000 pcs
	<a href="#">AP3772HK6TR-G1</a>	AP3772HK6TR-G1 BCD	BCD	12000 pcs
	<a href="#">AP3783RCK6TR-G1</a>	IC REG CTRLR AC/DC GEN3 SOT26	Diodes Incorporated	500 pcs
	<a href="#">AP3776BMTR-G1</a>	IC REG CTRLR AC/DC GEN3 8SOIC	Diodes Incorporated	353 pcs
	<a href="#">AP3785TAMTR-G1</a>	ACDC GEN 3 CONT SO-8 T&R 4K	Diodes Incorporated	500 pcs
	<a href="#">AP3801GM</a>	AP3801GM VB	VB	15868 pcs
	<a href="#">AP3783AK6TR-G1</a>	IC REG CTRLR AC/DC GEN3 SOT26	Diodes Incorporated	500 pcs
	<a href="#">AP3785HMTR-G1</a>	IC REG CONTROLLER	Diodes Incorporated	8000 pcs
	<a href="#">AP3790MTR-G1</a>	IC REG CONTROLLER 8SO	Diodes Incorporated	500 pcs

**IC Chips & IGBT Module - Hot Stock Part Number**

<a href="#">AP3766BK6TR-G1</a>	<a href="#">AP3766K6TR-G1</a>	<a href="#">AP3768MTR-G1</a>	<a href="#">AP3770AK6TR</a>	<a href="#">AP3770AK6TR-G1</a>
<a href="#">AP3770BK6TR</a>	<a href="#">AP3770BK6TR-G1</a>	<a href="#">AP3770BNK6TR-G1</a>	<a href="#">AP3770BPK6TR-G1</a>	<a href="#">AP3771AK6TR-G1</a>
<a href="#">AP3771BK6TR-BG1</a>	<a href="#">AP3771BK6TR-G1</a>	<a href="#">AP3771CK6TR-G1</a>	<a href="#">AP3772AK6TR-G1</a>	<a href="#">AP3772BK6TR-AG1</a>
<a href="#">AP3772BK6TR-G1</a>	<a href="#">AP3772BNK6TR-G1</a>	<a href="#">AP3772BPK6TR-G1</a>	<a href="#">AP3772HBK6TR-DG1</a>	<a href="#">AP3772HBK6TR-G1</a>
<a href="#">AP3772HBK6TR-G1-2</a>	<a href="#">AP3772HCK6TR-G1</a>	<a href="#">AP3772HCK6TR-GA</a>	<a href="#">AP3772HK6TR-G1</a>	<a href="#">AP3772TK6TR-G1</a>
<a href="#">AP3785HMTR-G1</a>	<a href="#">AP3785TM-G1</a>	<a href="#">AP3800TT/C1</a>	<a href="#">AP3801GM</a>	<a href="#">AP3801GM-HF</a>
<a href="#">AP380LM-G1</a>	<a href="#">AP383SL-13</a>	<a href="#">AP3842CMTR-E1</a>	<a href="#">AP3842CP-E1</a>	<a href="#">AP3842GM</a>
<a href="#">AP3842GM-E1</a>	<a href="#">AP3842GMTR-E1</a>	<a href="#">AP3842GP-E1</a>	<a href="#">AP3842N8L</a>	<a href="#">AP3843CM-E1</a>
<a href="#">AP3843CMTR-E1</a>	<a href="#">AP3843GP-E1</a>	<a href="#">AP3843N8L</a>	<a href="#">AP3843S8LA</a>	<a href="#">AP3844CMTR-E1</a>
<a href="#">AP3844GM</a>	<a href="#">AP3844GMTR-E1</a>	<a href="#">AP3845CP-E1</a>	<a href="#">AP3845S8LA</a>	<a href="#">AP3906MTR-G1</a>