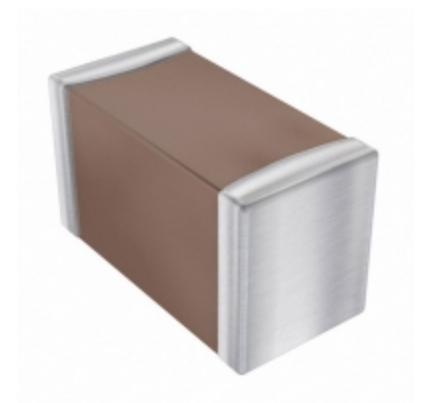


| | |
|-----------------------|--|
| 0603DD153KAT2A | |
| Part Number | 0603DD153KAT2A |
| Manufacturer | AVX Corporation |
| Description | CAP CER 0.015UF 35V X5R 0603 |
| Quantity Available | 500 pcs in stock |
| Datasheets | |
| 0603DD153KAT2A Price | Request Price & Lead Time Online or Email us: Info@ariat-tech.com |


[GET A QUOTE](#)

| Technical Information of 0603DD153KAT2A | | | |
|---|---------------------|-------------------------|---------------------------------------|
| Manufacturer Part Number | 0603DD153KAT2A | Category | Capacitors |
| Manufacturer | AVX Corporation | Description | CAP CER 0.015UF 35V X5R 0603 |
| Package / Case | Tape & Reel (TR) | Quantity Available | 500 |
| Series | - | Voltage - Rated | 35V |
| Operating Temperature | -55°C ~ 85°C | Ratings | - |
| Mounting Type | Surface Mount, MLCC | Size / Dimension | 0.063" L x 0.032" W (1.60mm x 0.81mm) |
| Height - Seated (Max) | - | Features | - |
| Capacitance | 0.015µF | Tolerance | ±10% |
| Applications | General Purpose | Lead Spacing | - |
| Package / Case | 0603 (1608 Metric) | Temperature Coefficient | X5R |
| Thickness (Max) | 0.035" (0.90mm) | Lead Style | - |
| Failure Rate | - | Packaging | Tape & Reel (TR) |

0603DD153KAT2A 500pcs New and Original in Stock, Find 0603DD153KAT2A Stock, Datasheet, PDF, Inventory at Ariat-Tech.com Online, Order 0603DD153KAT2A AVX Corporation with warrantied and confidence. RFQ 0603DD153KAT2A : Info@Ariat-Tech.com

| Related parts for 0603DD153KAT2A | | | | |
|----------------------------------|--------------------------------|---------------------------------|------------------|------------|
| Image | Part Number | Description | Manufacturer | Qty |
| | 0603ESDA-14 | 0603ESDA-14 SEMITEH | SEMITEH | 400000 pcs |
| | 0603CS-R22XJBC | 0603CS-R22XJBC Original | Original | 2000 pcs |
| | 0603ESDA-05 | 0603ESDA-05 COOPER/PL | COOPER/PL | 30000 pcs |
| | 0603CS-R18XJLW | 0603CS-R18XJLW Original | Original | 1534 pcs |
| | 0603CS-R27XJBW | 0603CS-R27XJBW COILCRAFT | COILCRAFT | 220 pcs |
| | 0603CS-R27XGLW | 0603CS-R27XGLW COILCRAFT | COILCRAFT | 1594 pcs |
| | 0603ESDA-09 | 0603ESDA-09 SEMITEH | SEMITEH | 400000 pcs |
| | 0603CS-R22XJLW | 0603CS-R22XJLW COILCRAFT | COILCRAFT | 9098 pcs |
| | 0603CS-R22XJBG | 0603CS-R22XJBG COILCRAFT | COILCRAFT | 3002 pcs |
| | 0603ESDA-04 | 0603ESDA-04 SEMITEH | SEMITEH | 400000 pcs |
| | 0603ESDA-07 | 0603ESDA-07 SEMITEH | SEMITEH | 400000 pcs |
| | 0603CS-R33XGLW | 0603CS-R33XGLW Original | Original | 696 pcs |
| | 0603DD223KAT2A | CAP CER 0.022UF 35V X5R 0603 | AVX Corporation | 500 pcs |
| | 0603ESDA-20 | 0603ESDA-20 SEMITEH | SEMITEH | 400000 pcs |
| | 0603DD333KAT2A | CAP CER 0.033UF 35V X5R 0603 | AVX Corporation | 500 pcs |
| | 0603CS-R27XJBC | 0603CS-R27XJBC Coilcraft | COILCRAFT | 3600 pcs |
| | 0603ESDA-11 | 0603ESDA-11 SEMITEH | SEMITEH | 400000 pcs |
| | 0603ESDA | SNGLE LINE POLYM ESD SUPPRESSOR | Bussmann (Eaton) | 30000 pcs |
| | 0603CS-R27XGBC | 0603CS-R27XGBC COILCRAFT | COILCRAFT | 2000 pcs |
| | 0603CS-R22XGBC | 0603CS-R22XGBC COILCRAFT | COILCRAFT | 2000 pcs |

IC Chips & IGBT Module - Hot Stock Part Number

| | | | | |
|--------------------------------|--------------------------------|--------------------------------|--------------------------------|--------------------------------|
| 06036D334MAT4A | 06036D335KAT2A | 06036D474KAT2A | 06036D474KAT2A | 06036D474KAT4A |
| 06036D474MAT2A | 06036D474MAT2A | 06036D474MAT4A | 06036D475KAT2A | 06036D475MAT2A |
| 06036D475MAT4A | 06036D564KAT2A | 06036D684KAT2A | 06036D823KAT2A | 06036D824KAT2A |
| 06036G105ZAT2A | 06036G474ZAT2A | 06036Z105KAT2A | 0603B102K500CT | 0603B104K500CT |
| 0603B183K500CT | 0603B223K500CT | 0603B333K500CT | 0603B473K250CT | 0603B821K500CT |
| 0603DD223KAT2A | 0603DD333KAT2A | 0603F104Z500CT | 0603YA100BAT2A | 0603YA100DAT2A |
| 0603YA100FAT2A | 0603YA100JAT2A | 0603YA100JAT2A | 0603YA100K4T2A | 0603YA100KAT2A |
| 0603YA101FAT2A | 0603YA101GAT2A | 0603YA101JAT2A | 0603YA101K4T2A | 0603YA101KAT4A |
| 0603YA101MAT2A | 0603YA101MAT4A | 0603YA102GAT2A | 0603YA102JAT2A | 0603YA102KAT2A |
| 0603YA120FAT2A | 0603YA120JAT2A | 0603YA120JAT4A | 0603YA121KAT2A | 0603YA150GAT2A |