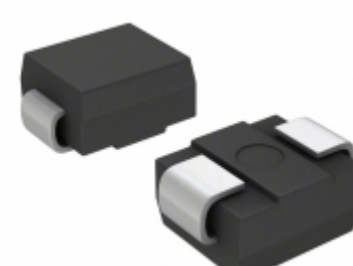


| | |
|------------------------|---|
| SMBJ100CA-M3/52 | |
| Part Number | SMBJ100CA-M3/52 |
| Manufacturer | Electro-Films (EFI) / Vishay |
| Description | TVS DIODE 100V 162V DO214AA |
| Quantity Available | 500 pcs in stock |
| Datasheets | SMBJ100CA-M3/52.pdf |
| SMBJ100CA-M3/52 Price | Request Price & Lead Time Online or Email us: Info@ariat-tech.com |


[GET A QUOTE](#)

| Technical Information of SMBJ100CA-M3/52 | | | |
|--|--|--------------------------------|------------------------------------|
| Manufacturer Part Number | SMBJ100CA-M3/52 | Category | Circuit Protection |
| Manufacturer | Electro-Films (EFI) / Vishay | Description | TVS DIODE 100V 162V DO214AA |
| Package / Case | Tape & Reel (TR) | Quantity Available | 500 |
| Voltage - Reverse Standoff (Typ) | 100V | Voltage - Clamping (Max) @ Ipp | 162V |
| Voltage - Breakdown (Min) | 111V | Type | Zener |
| Supplier Device Package | DO-214AA (SMBJ) | Series | TransZorb® |
| Power Line Protection | No | Power - Peak Pulse | 600W |
| Packaging | Tape & Reel (TR) | Package / Case | DO-214AA, SMB |
| Operating Temperature | -55°C ~ 150°C (TJ) | Mounting Type | Surface Mount |
| Moisture Sensitivity Level (MSL) | 1 (Unlimited) | Lead Free Status / RoHS Status | Lead free / RoHS Compliant |
| Current - Peak Pulse (10/1000µs) | 3.7A | Capacitance @ Frequency | - |
| Bidirectional Channels | 1 | Applications | General Purpose |

SMBJ100CA-M3/52 500pcs New and Original in Stock, Find SMBJ100CA-M3/52 Stock, Datasheet, PDF, Inventory at Ariat-Tech.com Online, Order SMBJ100CA-M3/52 Electro-Films (EFI) / Vishay with warrantied and confidence. RFQ SMBJ100CA-M3/52 : Info@Ariat-Tech.com

| Related parts for SMBJ100CA-M3/52 | | | | |
|-----------------------------------|----------------------------------|---------------------------------|--------------------------------------|-----------|
| Image | Part Number | Description | Manufacturer | Quantity |
| | SMBJ100CA-HR | TVS DIODE 100VWM 162VC | Littelfuse Inc. | 500 pcs |
| | SMBJ100CA-E3/52 | TVS DIODE 100VWM 162VC SMB | Vishay Semiconductor Diodes Division | 60750 pcs |
| | SMBJ100CA-13 | TVS DIODE 100VWM 162VC SMB | Diodes Incorporated | 500 pcs |
| | SMBJ100CAHE3/5B | TVS DIODE 100VWM 162VC SMB | Vishay Semiconductor Diodes Division | 500 pcs |
| | SMBJ100CA R5G | TVS DIODE 100V 162V DO214AA | TSC (Taiwan Semiconductor) | 500 pcs |
| | SMBJ100CA-M3/5B | TVS DIODE 100V 162V DO214AA | Electro-Films (EFI) / Vishay | 500 pcs |
| | SMBJ100CAHE3/52 | TVS DIODE 100VWM 162VC SMB | Vishay Semiconductor Diodes Division | 500 pcs |
| | SMBJ100CA-13-F | TVS DIODE 100VWM 162VC SMB | Diodes Incorporated | 7500 pcs |
| | SMBJ100CAE3/TR13 | TVS DIODE 100VWM 162VC SMBJ | Microsemi Corporation | 500 pcs |
| | SMBJ100CA-HRA | TVS DIODE 100VWM 162VC | Littelfuse Inc. | 500 pcs |
| | SMBJ100CA-E3/52 | TVS DIODE 100V 162V DO214AA | Electro-Films (EFI) / Vishay | 60750 pcs |
| | SMBJ100CA-E3/5B | TVS DIODE 100VWM 162VC SMB | Vishay Semiconductor Diodes Division | 500 pcs |
| | SMBJ100CAHE3/5B | TVS DIODE 100V 162V DO214AA | Electro-Films (EFI) / Vishay | 500 pcs |
| | SMBJ100CA-TR | TVS DIODE 100V 212V SMB | STMicroelectronics | 500 pcs |
| | SMBJ100CA-M3/52 | TVS DIODE 100VWM 162VC DO-215AA | Vishay Semiconductor Diodes Division | 500 pcs |
| | SMBJ100CA-E3/5B | TVS DIODE 100V 162V DO214AA | Electro-Films (EFI) / Vishay | 500 pcs |
| | SMBJ100CA-TP | TVS DIODE 100VWM 162VC SMB | Micro Commercial Co | 500 pcs |
| | SMBJ100CA-M3/5B | TVS DIODE 100VWM 162VC DO-215AA | Vishay Semiconductor Diodes Division | 500 pcs |
| | SMBJ100CAHE3/52 | TVS DIODE 100V 162V DO214AA | Electro-Films (EFI) / Vishay | 500 pcs |
| | SMBJ100CA-TP | TVS DIODE 100VWM 162VC SMB | Micro Commercial Co | 500 pcs |

| | | | |
|---|--|---|--|
| SMBJ100CA-M3/52 Stock | SMBJ100CA-M3/52 Price | SMBJ100CA-M3/52 Electronics | SMBJ100CA-M3/52 Components |
| SMBJ100CA-M3/52 Inventory | SMBJ100CA-M3/52 Digikay | Supplier SMBJ100CA-M3/52 | Order SMBJ100CA-M3/52 Online |
| Inquiry SMBJ100CA-M3/52 | SMBJ100CA-M3/52 Image | SMBJ100CA-M3/52 Picture | SMBJ100CA-M3/52 PDF |
| SMBJ100CA-M3/52 Datasheet | Download SMBJ100CA-M3/52 Datasheet | Manufacturer Electro-Films (EFI) / Vishay | |