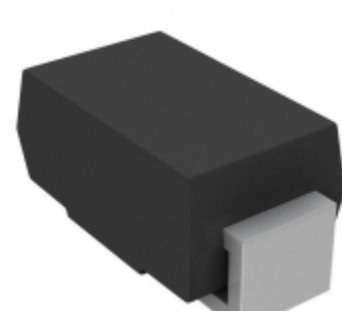


<b>SMAJ160A-M3/61</b>	
Part Number	<a href="#">SMAJ160A-M3/61</a>
Manufacturer	<a href="#">Electro-Films (EFI) / Vishay</a>
Description	TVS DIODE 160V 259V DO214AC
Quantity Available	500 pcs in stock
Datasheets	
SMAJ160A-M3/61 Price	<a href="#">Request Price &amp; Lead Time Online</a> or Email us: <a href="mailto:Info@ariat-tech.com">Info@ariat-tech.com</a>


[GET A QUOTE](#)
**Technical Information of SMAJ160A-M3/61**

Manufacturer Part Number	<a href="#">SMAJ160A-M3/61</a>	Category	<a href="#">Circuit Protection</a>
Manufacturer	<a href="#">Electro-Films (EFI) / Vishay</a>	Description	TVS DIODE 160V 259V DO214AC
Package / Case	Tape & Reel (TR)	Quantity Available	500
Voltage - Reverse Standoff (Typ)	160V	Voltage - Clamping (Max) @ Ipp	259V
Voltage - Breakdown (Min)	178V	Unidirectional Channels	1
Type	Zener	Supplier Device Package	DO-214AC (SMA)
Series	TransZorb®	Power Line Protection	No
Power - Peak Pulse	300W	Packaging	Tape & Reel (TR)
Package / Case	DO-214AC, SMA	Operating Temperature	-55°C ~ 150°C (TJ)
Mounting Type	Surface Mount	Moisture Sensitivity Level (MSL)	1 (Unlimited)
Manufacturer Standard Lead Time	46 Weeks	Lead Free Status / RoHS Status	Lead free / RoHS Compliant
Current - Peak Pulse (10/1000µs)	1.2A	Capacitance @ Frequency	-
Applications	General Purpose		

SMAJ160A-M3/61 500pcs New and Original in Stock, Find SMAJ160A-M3/61 Stock, Datasheet, PDF, Inventory at Ariat-Tech.com Online, Order SMAJ160A-M3/61 Electro-Films (EFI) / Vishay with warrantied and confidence. RFQ SMAJ160A-M3/61 : [Info@Ariat-Tech.com](mailto:Info@Ariat-Tech.com)

**Related parts for SMAJ160A-M3/61**

Image	Part Number	Description	Manufacturer	Quantity
	<a href="#">SMAJ160AE3/TR13</a>	TVS DIODE 160VWM 259VC SMAJ	Microsemi Corporation	500 pcs
	<a href="#">SMAJ160A-13-F</a>	TVS DIODE 160VWM 259VC SMA	Diodes Incorporated	32880 pcs
	<a href="#">SMAJ160A-M3/5A</a>	TVS DIODE 160V 259V DO214AC	Electro-Films (EFI) / Vishay	500 pcs
	<a href="#">SMAJ160AHR3G</a>	TVS DIODE 160V 259V DO214AC	TSC (Taiwan Semiconductor)	500 pcs
	<a href="#">SMAJ160AHE3/61</a>	TVS DIODE 160VWM 259VC SMA	Vishay Semiconductor Diodes Division	500 pcs
	<a href="#">SMAJ160A-E3/61</a>	TVS DIODE 160VWM 259VC SMA	Vishay Semiconductor Diodes Division	10800 pcs
	<a href="#">SMAJ160A-E3/5A</a>	TVS DIODE 160VWM 259VC SMA	Vishay Semiconductor Diodes Division	500 pcs
	<a href="#">SMAJ160ATR</a>	TVS DIODE 160VWM 259VC SMA	SMC Diode Solutions	500 pcs
	<a href="#">SMAJ160A-M3/61</a>	TVS DIODE 160VWM 259VC DO-214AC	Vishay Semiconductor Diodes Division	500 pcs
	<a href="#">SMAJ160AHM2G</a>	TVS DIODE 160V 259V DO214AC	TSC (Taiwan Semiconductor)	500 pcs
	<a href="#">SMAJ160A-TP</a>	TVS DIODE 160VWM 259VC SMA	Micro Commercial Co	500 pcs
	<a href="#">SMAJ160A R2</a>	SMAJ160A R2 TSC	TSC	95 pcs
	<a href="#">SMAJ160AHE3/5A</a>	TVS DIODE 160V 259V DO214AC	Electro-Films (EFI) / Vishay	500 pcs
	<a href="#">SMAJ160A-M3/5A</a>	TVS DIODE 160VWM 259VC DO-214AC	Vishay Semiconductor Diodes Division	500 pcs
	<a href="#">SMAJ160A R3G</a>	TVS DIODE 160V 259V DO214AC	TSC (Taiwan Semiconductor)	500 pcs
	<a href="#">SMAJ160A-E3/5A</a>	TVS DIODE 160V 259V DO214AC	Electro-Films (EFI) / Vishay	500 pcs
	<a href="#">SMAJ160A-13</a>	TVS DIODE 160VWM 259VC SMA	Diodes Incorporated	500 pcs
	<a href="#">SMAJ160AHE3/5A</a>	TVS DIODE 160VWM 259VC SMA	Vishay Semiconductor Diodes Division	500 pcs
	<a href="#">SMAJ160A-E3/61</a>	TVS DIODE 160V 259V DO214AC	Electro-Films (EFI) / Vishay	10800 pcs
	<a href="#">SMAJ160AHE3/61</a>	TVS DIODE 160V 259V DO214AC	Electro-Films (EFI) / Vishay	500 pcs

<a href="#">SMAJ160A-M3/61 Stock</a>	<a href="#">SMAJ160A-M3/61 Price</a>	<a href="#">SMAJ160A-M3/61 Electronics</a>	<a href="#">SMAJ160A-M3/61 Components</a>
<a href="#">SMAJ160A-M3/61 Inventory</a>	<a href="#">SMAJ160A-M3/61 Digikey</a>	<a href="#">Supplier SMAJ160A-M3/61</a>	<a href="#">Order SMAJ160A-M3/61 Online</a>
<a href="#">Inquiry SMAJ160A-M3/61</a>	<a href="#">SMAJ160A-M3/61 Image</a>	<a href="#">SMAJ160A-M3/61 Picture</a>	<a href="#">SMAJ160A-M3/61 PDF</a>
<a href="#">SMAJ160A-M3/61 Datasheet</a>	<a href="#">Download SMAJ160A-M3/61 Datasheet</a>	<a href="#">Manufacturer Electro-Films (EFI) / Vishay</a>	