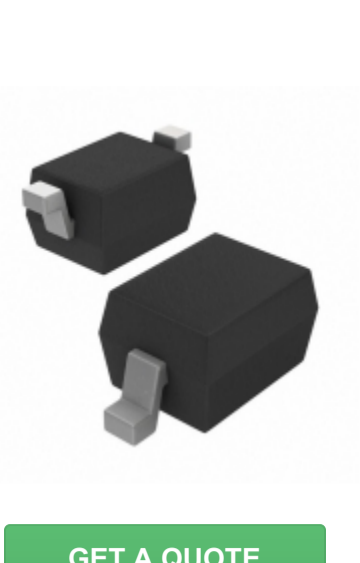


<b>1N4448WS-HE3-08</b>	
Part Number	<a href="#">1N4448WS-HE3-08</a>
Manufacturer	<a href="#">Electro-Films (EFI) / Vishay</a>
Description	DIODE GEN PURP 75V 150MA SOD323
Quantity Available	500 pcs in stock
Datasheets	
1N4448WS-HE3-08 Price	<a href="#">Request Price &amp; Lead Time Online</a> or Email us: <a href="mailto:Info@ariat-tech.com">Info@ariat-tech.com</a>


[GET A QUOTE](#)

Technical Information of 1N4448WS-HE3-08			
Manufacturer Part Number	<a href="#">1N4448WS-HE3-08</a>	Category	Discrete Semiconductor
Manufacturer	<a href="#">Electro-Films (EFI) / Vishay</a>	Description	DIODE GEN PURP 75V 150MA SOD323
Package / Case	Tape & Reel (TR)	Quantity Available	500
Voltage - Forward (Vf) (Max) @ If	720mV @ 5mA	Voltage - DC Reverse (Vr) (Max)	75V
Supplier Device Package	SOD-323	Speed	Small Signal =< 200mA (Io), Any Speed
Series	-	Reverse Recovery Time (trr)	4ns
Packaging	Tape & Reel (TR)	Package / Case	SC-76, SOD-323
Other Names	1N4448WS-HE3-08-ND 1N4448WS-HE3-08G1TR	Operating Temperature - Junction	-55°C ~ 150°C
Mounting Type	Surface Mount	Moisture Sensitivity Level (MSL)	1 (Unlimited)
Manufacturer Standard Lead Time	49 Weeks	Lead Free Status / RoHS Status	Lead free / RoHS Compliant
Diode Type	Standard	Detailed Description	Diode Standard 75V 150mA Surface Mount SOD-323
Current - Reverse Leakage @ Vr	5µA @ 75V	Current - Average Rectified (Io)	150mA
Capacitance @ Vr, F	-		

1N4448WS-HE3-08 500pcs New and Original in Stock, Find 1N4448WS-HE3-08 Stock, Datasheet, PDF, Inventory at Ariat-Tech.com Online, Order 1N4448WS-HE3-08 Electro-Films (EFI) / Vishay with warrantied and confidence. RFQ 1N4448WS-HE3-08 : [Info@Ariat-Tech.com](mailto:Info@Ariat-Tech.com)

Related parts for 1N4448WS-HE3-08				
Image	Part Number	Description	Manufacturer	Quantity
	<a href="#">1N4448WS-G3-18</a>	DIODE GEN PURP 75V 150MA SOD323	Vishay Semiconductor Diodes Division	500 pcs
	<a href="#">1N4448WS-E3-08</a>	DIODE GEN PURP 75V 150MA SOD323	Vishay Semiconductor Diodes Division	500 pcs
	<a href="#">1N4448WS-HE3-18</a>	DIODE GEN PURP 75V 150MA SOD323	Electro-Films (EFI) / Vishay	500 pcs
	<a href="#">1N4448WS-HE3-18</a>	DIODE GEN PURP 75V 150MA SOD323	Vishay Semiconductor Diodes Division	500 pcs
	<a href="#">1N4448WS-E3-18</a>	DIODE GEN PURP 75V 150MA SOD323	Vishay Semiconductor Diodes Division	500 pcs
	<a href="#">1N4448WST/R</a>	1N4448WST/R PANJIT	PANJIT	42800 pcs
	<a href="#">1N4448WST5</a>	1N4448WST5 Original	Original	9000 pcs
	<a href="#">1N4448WS-7-F</a>	DIODE GEN PURP 75V 250MA SOD323	Diodes Incorporated	255018 pcs
	<a href="#">1N4448WT</a>	DIODE GEN PURP 75V 200MA SOD523F	AMI Semiconductor / ON Semiconductor	8000 pcs
	<a href="#">1N4448WS-G3-08</a>	DIODE GEN PURP 75V 150MA SOD323	Electro-Films (EFI) / Vishay	500 pcs
	<a href="#">1N4448WS-G3-08</a>	DIODE GEN PURP 75V 150MA SOD323	Vishay Semiconductor Diodes Division	500 pcs
	<a href="#">1N4448WS-E3-18</a>	DIODE GEN PURP 75V 150MA SOD323	Electro-Films (EFI) / Vishay	500 pcs
	<a href="#">1N4448WSQ-7-F</a>	DIODE FAST REC 75V 0.25A SOD323	Diodes Incorporated	500 pcs
	<a href="#">1N4448WS-G3-18</a>	DIODE GEN PURP 75V 150MA SOD323	Electro-Films (EFI) / Vishay	500 pcs
	<a href="#">1N4448WSF-7</a>	DIODE GEN PURP 75V 250MA SOD323F	Diodes Incorporated	6000 pcs
	<a href="#">1N4448WS-E3-08</a>	DIODE GEN PURP 75V 150MA SOD323	Electro-Films (EFI) / Vishay	500 pcs
	<a href="#">1N4448WSFQ-7</a>	DIODE FAST REC 75V 0.25A SOD323F	Diodes Incorporated	500 pcs
	<a href="#">1N4448WSF</a>	1N4448WSF LITEON	LITEON	6000 pcs
	<a href="#">1N4448WS-HE3-08</a>	DIODE GEN PURP 75V 150MA SOD323	Vishay Semiconductor Diodes Division	500 pcs
	<a href="#">1N4448WSTR</a>	DIODE GEN PURP 75V 250MA SOD323	SMC Diode Solutions	500 pcs

1N4448WS-HE3-08 Stock	1N4448WS-HE3-08 Price	1N4448WS-HE3-08 Electronics	1N4448WS-HE3-08 Components
1N4448WS-HE3-08 Inventory	1N4448WS-HE3-08 Digkey	Supplier 1N4448WS-HE3-08	Order 1N4448WS-HE3-08 Online
Inquiry 1N4448WS-HE3-08	1N4448WS-HE3-08 Image	1N4448WS-HE3-08 Picture	1N4448WS-HE3-08 PDF
1N4448WS-HE3-08 Datasheet	Download 1N4448WS-HE3-08 Datasheet	Manufacturer Electro-Films (EFI) / Vishay	