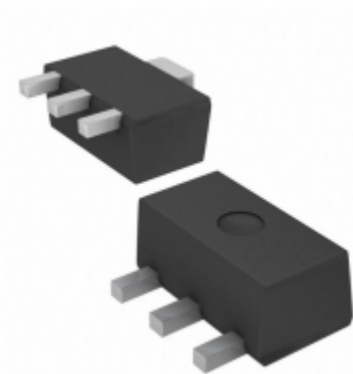


| AP7365-20YG-13       |   |
|----------------------|---|
| Part Number          | <a href="#">AP7365-20YG-13</a>  |
| Manufacturer         | <a href="#">Diodes Incorporated</a>   |
| Description          | IC REG LDO 2V 0.6A SOT-893L   |
| Quantity Available   | 2500 pcs in stock   |
| Datasheets           | <a href="#">AP7365-20YG-13.pdf</a>  |
| AP7365-20YG-13 Price | <a href="#">Request Price &amp; Lead Time Online</a><br>or Email us: <a href="mailto:Info@ariat-tech.com">Info@ariat-tech.com</a> |


[GET A QUOTE](#)

| Technical Information of AP7365-20YG-13 |                                     |                             |   |
|---|-------------------------------------|-----------------------------|---|
| Manufacturer Part Number                | <a href="#">AP7365-20YG-13</a>      | Category                    | <a href="#">Integrated Circuits (ICs)</a> |
| Manufacturer                            | <a href="#">Diodes Incorporated</a> | Description                 | IC REG LDO 2V 0.6A SOT-893L               |
| Package / Case                          | Tape & Reel (TR)                    | Quantity Available          | 2500                                      |
| Series                                  | -                                   | Operating Temperature       | -40°C ~ 85°C                              |
| Mounting Type                           | Surface Mount                       | Voltage - Input             | Up to 6V                                  |
| Package / Case                          | TO-243AA                            | Supplier Device Package     | SOT-89-3                                  |
| Voltage - Output                        | 2V                                  | Current - Output            | 600mA                                     |
| Regulator Topology                      | Positive Fixed                      | Voltage - Dropout (Typical) | 0.37V @ 600mA                             |
| Number of Regulators                    | 1                                   | Current - Limit (Min)       | 800mA                                     |
| Packaging                               | Tape & Reel (TR)                    |                             |   |

AP7365-20YG-13 2500pcs New and Original in Stock, Find AP7365-20YG-13 Stock, Datasheet, PDF, Inventory at Ariat-Tech.com Online, Order AP7365-20YG-13 Diodes Incorporated with warrantied and confidence. RFQ AP7365-20YG-13 : [Info@Ariat-Tech.com](mailto:Info@Ariat-Tech.com)

| Related parts for AP7365-20YG-13 |                                 |                                |                     |           |
|----------------------------------|---------------------------------|--------------------------------|---------------------|-----------|
| Image                            | Part Number                     | Description                    | Manufacturer        | Qty       |
|                                  | <a href="#">AP7365-18WG-7</a>   | IC REG LDO 1.8V 0.6A SOT-25    | Diodes Incorporated | 33902 pcs |
|                                  | <a href="#">AP7365-25WG-7</a>   | IC REG LDO 2.5V 0.6A SOT-25    | Diodes Incorporated | 33902 pcs |
|                                  | <a href="#">AP7365-25YG-13</a>  | IC REG LDO 2.5V 0.6A SOT-893L  | Diodes Incorporated | 1500 pcs  |
|                                  | <a href="#">AP7365-18YRG-13</a> | IC REG LDO 1.8V 0.6A SOT89-3   | Diodes Incorporated | 9930 pcs  |
|                                  | <a href="#">AP7365-25EG-13</a>  | IC REG LDO 2.5V 0.6A SOT-2233L | Diodes Incorporated | 500 pcs   |
|                                  | <a href="#">AP7365-18EG-13</a>  | IC REG LDO 1.8V 0.6A SOT223-3  | Diodes Incorporated | 4500 pcs  |
|                                  | <a href="#">AP7365-25SNG-7</a>  | IC REG LDO 2.5V 0.6A DFN2020-6 | Diodes Incorporated | 6000 pcs  |
|                                  | <a href="#">AP7365-28SNG-7</a>  | IC REG LDO 2.8V 0.6A DFN2020-6 | Diodes Incorporated | 2532 pcs  |
|                                  | <a href="#">AP7365-28EG-13</a>  | IC REG LDO 2.8V 0.6A SOT-2233L | Diodes Incorporated | 5000 pcs  |
|                                  | <a href="#">AP7365-20YRG-13</a> | IC REG LDO 2V 0.6A SOT-893L    | Diodes Incorporated | 5000 pcs  |
|                                  | <a href="#">AP7365-25YRG-13</a> | IC REG LDO 2.5V 0.6A SOT-893L  | Diodes Incorporated | 2500 pcs  |
|                                  | <a href="#">AP7365-18SNG-7</a>  | IC REG LDO 1.8V 0.6A DFN2020-6 | Diodes Incorporated | 15000 pcs |
|                                  | <a href="#">AP7365-28ERG-13</a> | IC REG LDO 2.8V 0.6A SOT-2233L | Diodes Incorporated | 5000 pcs  |
|                                  | <a href="#">AP7365-20EG-13</a>  | IC REG LDO 2V 0.6A SOT-2233L   | Diodes Incorporated | 5000 pcs  |
|                                  | <a href="#">AP7365-25ERG-13</a> | IC REG LDO 2.5V 0.6A SOT-2233L | Diodes Incorporated | 5488 pcs  |
|                                  | <a href="#">AP7365-18YG-13</a>  | IC REG LDO 1.8V 0.6A SOT89-3   | Diodes Incorporated | 2500 pcs  |
|                                  | <a href="#">AP7365-20SNG-7</a>  | IC REG LDO 2V 0.6A DFN2020-6   | Diodes Incorporated | 15000 pcs |
|                                  | <a href="#">AP7365-18ERG-13</a> | IC REG LDO 1.8V 0.6A SOT223-3  | Diodes Incorporated | 5800 pcs  |
|                                  | <a href="#">AP7365-20WG-7</a>   | IC REG LDO 2V 0.6A SOT-25      | Diodes Incorporated | 9000 pcs  |
|                                  | <a href="#">AP7365-20ERG-13</a> | IC REG LDO 2V 0.6A SOT-2233L   | Diodes Incorporated | 9000 pcs  |

**IC Chips & IGBT Module - Hot Stock Part Number**

|                                 |                                 |                                 |                                 |                                 |
|---------------------------------|---------------------------------|---------------------------------|---------------------------------|---------------------------------|
| <a href="#">AP7365-10ERG-13</a> | <a href="#">AP7365-10EVG-13</a> | <a href="#">AP7365-10WG-7</a>   | <a href="#">AP7365-10YG-13</a>  | <a href="#">AP7365-10YRG-13</a> |
| <a href="#">AP7365-12EG-13</a>  | <a href="#">AP7365-12ERG-13</a> | <a href="#">AP7365-12WG-7</a>   | <a href="#">AP7365-12YG-13</a>  | <a href="#">AP7365-12YRG-13</a> |
| <a href="#">AP7365-15EG-13</a>  | <a href="#">AP7365-15ERG-13</a> | <a href="#">AP7365-15SNG-7</a>  | <a href="#">AP7365-15WG-7</a>   | <a href="#">AP7365-15YG-13</a>  |
| <a href="#">AP7365-15YRG-13</a> | <a href="#">AP7365-18EG-13</a>  | <a href="#">AP7365-18SNG-7</a>  | <a href="#">AP7365-18WG-7</a>   | <a href="#">AP7365-18YG-13</a>  |
| <a href="#">AP7365-18YRG-13</a> | <a href="#">AP7365-20EG-13</a>  | <a href="#">AP7365-20ERG-13</a> | <a href="#">AP7365-20SNG-7</a>  | <a href="#">AP7365-20WG-7</a>   |
| <a href="#">AP7365-20YRG-13</a> | <a href="#">AP7365-25WG-7</a>   | <a href="#">AP7365-25YRG-13</a> | <a href="#">AP7365-28EG-13</a>  | <a href="#">AP7365-28ERG-13</a> |
| <a href="#">AP7365-28WG-7</a>   | <a href="#">AP7365-28YRG-13</a> | <a href="#">AP7365-30EG-13</a>  | <a href="#">AP7365-30ERG-13</a> | <a href="#">AP7365-30SNG-7</a>  |
| <a href="#">AP7365-30WG-7</a>   | <a href="#">AP7365-30YG-13</a>  | <a href="#">AP7365-30YRG-13</a> | <a href="#">AP7365-33ERG-13</a> | <a href="#">AP7365-33EVG-13</a> |
| <a href="#">AP7365-33WG-7</a>   | <a href="#">AP7365-33YG-13</a>  | <a href="#">AP7365-33YRG-13</a> | <a href="#">AP7365-39EG-13</a>  | <a href="#">AP7365-39WG-7</a>   |
| <a href="#">AP7365-39YG-13</a>  | <a href="#">AP7365-39YRG-13</a> | <a href="#">AP7365-ADJWG-7</a>  | <a href="#">AP7365-WG-7</a>     | <a href="#">AP78L05SG-13</a>    |