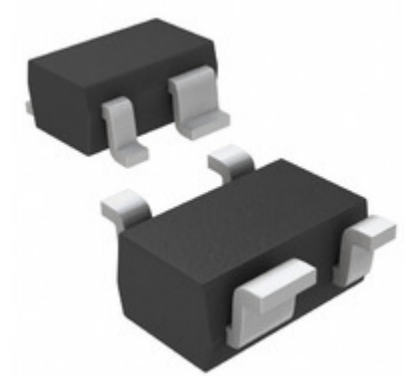


<b>MAX6385XS46D2-T</b>	
Part Number	<a href="#">MAX6385XS46D2-T</a>
Manufacturer	<a href="#">Maxim Integrated</a>
Description	IC MPU/RESET CIRC 4.63V SC70-4
Quantity Available	500 pcs in stock
Datasheets	<a href="#">MAX6385XS46D2-T.pdf</a>
MAX6385XS46D2-T Price	<a href="#">Request Price &amp; Lead Time Online</a> or Email us: <a href="mailto:Info@ariat-tech.com">Info@ariat-tech.com</a>


[GET A QUOTE](#)

Technical Information of MAX6385XS46D2-T			
Manufacturer Part Number	MAX6385XS46D2-T	Category	Integrated Circuits (ICs)
Manufacturer	Maxim Integrated	Description	IC MPU/RESET CIRC 4.63V SC70-4
Package / Case	Tape & Reel (TR)	Quantity Available	500
Voltage - Threshold	4.63V	Type	Simple Reset/Power-On Reset
Supplier Device Package	SC-70-4	Series	-
Reset Timeout	20 ms Minimum	Reset	Active High
Packaging	Tape & Reel (TR)	Package / Case	SC-82A, SOT-343
Output	Push-Pull, Totem Pole	Operating Temperature	-40°C ~ 125°C (TA)
Number of Voltages Monitored	1	Mounting Type	Surface Mount

MAX6385XS46D2-T 500pcs New and Original in Stock, Find MAX6385XS46D2-T Stock, Datasheet, PDF, Inventory at Ariat-Tech.com Online, Order MAX6385XS46D2-T Maxim Integrated with warrantied and confidence. RFQ MAX6385XS46D2-T : [Info@Ariat-Tech.com](mailto:Info@Ariat-Tech.com)

Related parts for MAX6385XS46D2-T				
Image	Part Number	Description	Manufacturer	Quantity
	<a href="#">MAX6385XS46D5-T</a>	IC MPU/RESET CIRC 4.63V SC70-4	Maxim Integrated	500 pcs
	<a href="#">MAX6385XS45D7-T</a>	IC MPU/RESET CIRC 4.50V SC70-4	Maxim Integrated	500 pcs
	<a href="#">MAX6385XS45D5-T</a>	IC MPU/RESET CIRC 4.50V SC70-4	Maxim Integrated	500 pcs
	<a href="#">MAX6385XS45D6-T</a>	IC MPU/RESET CIRC 4.50V SC70-4	Maxim Integrated	500 pcs
	<a href="#">MAX6385XS46D4-T</a>	IC MPU/RESET CIRC 4.63V SC70-4	Maxim Integrated	500 pcs
	<a href="#">MAX6385XS46D3+</a>	IC SUPERVISOR	Maxim Integrated	500 pcs
	<a href="#">MAX6385XS44D7-T</a>	IC MPU/RESET CIRC 4.38V SC70-4	Maxim Integrated	500 pcs
	<a href="#">MAX6386LT16D3+T</a>	IC MPU/RESET CIRC 1.58V 6-UDFN	Maxim Integrated	500 pcs
	<a href="#">MAX6385XS45D3-T</a>	IC MPU/RESET CIRC 4.50V SC70-4	Maxim Integrated	500 pcs
	<a href="#">MAX6385XS46D3+T</a>	IC MPU/RESET CIRC 4.63V SC70-4	Maxim Integrated	500 pcs
	<a href="#">MAX6385XS45D1-T</a>	IC MPU/RESET CIRC 4.50V SC70-4	Maxim Integrated	500 pcs
	<a href="#">MAX6385XS46D6-T</a>	IC MPU/RESET CIRC 4.63V SC70-4	Maxim Integrated	500 pcs
	<a href="#">MAX6386LT16D1+T</a>	IC MPU/RESET CIRC 1.58V 6-UDFN	Maxim Integrated	500 pcs
	<a href="#">MAX6385XS46D3-T</a>	IC MPU/RESET CIRC 4.63V SC70-4	Maxim Integrated	500 pcs
	<a href="#">MAX6385XS45D2-T</a>	IC MPU/RESET CIRC 4.50V SC70-4	Maxim Integrated	500 pcs
	<a href="#">MAX6386LT16D2+T</a>	IC MPU/RESET CIRC 1.58V 6-UDFN	Maxim Integrated	500 pcs
	<a href="#">MAX6385XS44D6-T</a>	IC MPU/RESET CIRC 4.38V SC70-4	Maxim Integrated	500 pcs
	<a href="#">MAX6385XS46D1-T</a>	IC MPU/RESET CIRC 4.63V SC70-4	Maxim Integrated	500 pcs
	<a href="#">MAX6385XS45D4-T</a>	IC MPU/RESET CIRC 4.50V SC70-4	Maxim Integrated	500 pcs
	<a href="#">MAX6385XS46D7-T</a>	IC MPU/RESET CIRC 4.63V SC70-4	Maxim Integrated	500 pcs

<a href="#">MAX6385XS46D2-T Stock</a>	<a href="#">MAX6385XS46D2-T Price</a>	<a href="#">MAX6385XS46D2-T Electronics</a>	<a href="#">MAX6385XS46D2-T Components</a>
<a href="#">MAX6385XS46D2-T Inventory</a>	<a href="#">MAX6385XS46D2-T Digikey</a>	<a href="#">Supplier MAX6385XS46D2-T</a>	<a href="#">Order MAX6385XS46D2-T Online</a>
<a href="#">Inquiry MAX6385XS46D2-T</a>	<a href="#">MAX6385XS46D2-T Image</a>	<a href="#">MAX6385XS46D2-T Picture</a>	<a href="#">MAX6385XS46D2-T PDF</a>
<a href="#">MAX6385XS46D2-T Datasheet</a>	<a href="#">Download MAX6385XS46D2-T Datasheet</a>	<a href="#">Manufacturer Maxim Integrated</a>	