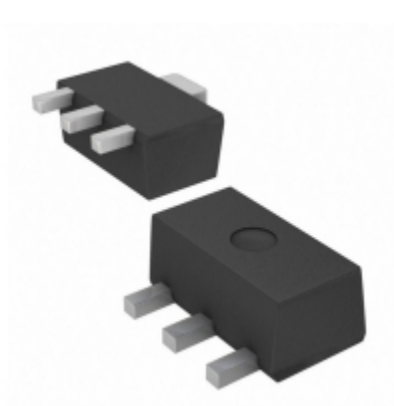


<b>BCX5310TA</b>	
Part Number	<a href="#">BCX5310TA</a>
Manufacturer	<a href="#">Diodes Incorporated</a>
Description	TRANS PNP 80V 1A SOT89
Quantity Available	13520 pcs in stock
Datasheets	
BCX5310TA Price	<a href="#">Request Price &amp; Lead Time Online</a> or Email us: <a href="mailto:Info@ariat-tech.com">Info@ariat-tech.com</a>


[GET A QUOTE](#)

Technical Information of BCX5310TA			
Manufacturer Part Number	<a href="#">BCX5310TA</a>	Category	<a href="#">Discrete Semiconductor</a>
Manufacturer	<a href="#">Diodes Incorporated</a>	Description	TRANS PNP 80V 1A SOT89
Package / Case	Tape & Reel (TR)	Quantity Available	13520
Series	-	Operating Temperature	-65°C ~ 150°C (TJ)
Mounting Type	Surface Mount	Power - Max	1W
Package / Case	TO-243AA	Supplier Device Package	SOT-89
Transistor Type	PNP	Current - Collector (Ic) (Max)	1A
Voltage - Collector Emitter Breakdown (Max)	80V	Vce Saturation (Max) @ Ib, Ic	500mV @ 50mA, 500mA
Current - Collector Cutoff (Max)	100nA (ICBO)	DC Current Gain (hFE) (Min) @ Ic, Vce	63 @ 150mA, 2V
Frequency - Transition	150MHz	Packaging	Tape & Reel (TR)

BCX5310TA 13520pcs New and Original in Stock, Find BCX5310TA Stock, Datasheet, PDF, Inventory at Ariat-Tech.com Online, Order BCX5310TA Diodes Incorporated with warrantied and confidence. RFQ BCX5310TA : [Info@Ariat-Tech.com](mailto:Info@Ariat-Tech.com)

Related parts for BCX5310TA				
Image	Part Number	Description	Manufacturer	Qty
	<a href="#">BCX53-A</a>	BCX53-A GTM	GTM	1000 pcs
	<a href="#">BCX53-16T100</a>	TRANS PNP MPT3	LAPIS Semiconductor	500 pcs
	<a href="#">BCX53-16H6433</a>	BCX53-16H6433 INFINEON	International Rectifier (Infineon Technologies)	24000 pcs
	<a href="#">BCX5316E6433HTMA1</a>	TRANS PNP 80V 1A SOT-89	International Rectifier (Infineon Technologies)	500 pcs
	<a href="#">BCX5310H6327XTSA1</a>	TRANSISTOR AF SOT89-4	International Rectifier (Infineon Technologies)	500 pcs
	<a href="#">BCX53E6327HTSA1</a>	TRANS PNP 80V 1A SOT-89	International Rectifier (Infineon Technologies)	500 pcs
	<a href="#">BCX53H6327</a>	BCX53H6327 INFINEON	International Rectifier (Infineon Technologies)	6000 pcs
	<a href="#">BCX53-B</a>	BCX53-B GTM	GTM	5000 pcs
	<a href="#">BCX5316E6327HTSA1</a>	TRANS PNP 80V 1A SOT-89	International Rectifier (Infineon Technologies)	500 pcs
	<a href="#">BCX53-16E6327</a>	BCX53-16E6327 INFINEON	International Rectifier (Infineon Technologies)	42000 pcs
	<a href="#">BCX53H6327XTSA1</a>	TRANSISTOR AF SOT89-4	International Rectifier (Infineon Technologies)	500 pcs
	<a href="#">BCX53-TP</a>	PNP,TRANSISTORS,SOT-89 PACKAGE	Micro Commercial Components (MCC)	500 pcs
	<a href="#">BCX53-AH</a>	BCX53-AH KEXIN	KEXIN	12000 pcs
	<a href="#">BCX5316TA</a>	TRANS PNP 80V 1A SOT-89	Diodes Incorporated	9000 pcs
	<a href="#">BCX53-16-TP</a>	PNP,TRANSISTORS,SOT-89 PACKAGE	Micro Commercial Components (MCC)	500 pcs
	<a href="#">BCX5310E6327HTSA1</a>	TRANS PNP 80V 1A SOT-89	International Rectifier (Infineon Technologies)	500 pcs
	<a href="#">BCX5316-13R</a>	TRANS PNP 80V 1A SOT89	Diodes Incorporated	32000 pcs
	<a href="#">BCX5316H6327XTSA1</a>	TRANSISTOR AF SOT89-4	International Rectifier (Infineon Technologies)	500 pcs
	<a href="#">BCX53TA</a>	TRANS PNP 80V 1A SOT89	Diodes Incorporated	12000 pcs
	<a href="#">BCX5316H6433XTMA1</a>	TRANSISTOR AF SOT89-4	International Rectifier (Infineon Technologies)	500 pcs

**IC Chips & IGBT Module - Hot Stock Part Number**

<a href="#">BCX51-10</a>	<a href="#">BCX51-10TAPBF</a>	<a href="#">BCX51-13R</a>	<a href="#">BCX51-16</a>	<a href="#">BCX51-16E6327</a>
<a href="#">BCX51-16E6433</a>	<a href="#">BCX5110TA</a>	<a href="#">BCX5116TA</a>	<a href="#">BCX51E6327</a>	<a href="#">BCX51T/R</a>
<a href="#">BCX52-10</a>	<a href="#">BCX52-16</a>	<a href="#">BCX5210TA</a>	<a href="#">BCX5216QTA</a>	<a href="#">BCX5216TA</a>
<a href="#">BCX52E6327</a>	<a href="#">BCX52H6327</a>	<a href="#">BCX53-10</a>	<a href="#">BCX53-10/FD</a>	<a href="#">BCX53-10E-6874</a>
<a href="#">BCX53-10H6327</a>	<a href="#">BCX53-16</a>	<a href="#">BCX53-16E6327</a>	<a href="#">BCX53-16H6433</a>	<a href="#">BCX53-AH</a>
<a href="#">BCX5316TA</a>	<a href="#">BCX53H6327</a>	<a href="#">BCX54-10</a>	<a href="#">BCX54-16</a>	<a href="#">BCX54-16/R</a>
<a href="#">BCX54-16E6327</a>	<a href="#">BCX54-16H6327</a>	<a href="#">BCX5410TA</a>	<a href="#">BCX5416-13R</a>	<a href="#">BCX5416TA</a>
<a href="#">BCX54E6327</a>	<a href="#">BCX55-10</a>	<a href="#">BCX55-16</a>	<a href="#">BCX55-16E6327</a>	<a href="#">BCX55-16E6433</a>
<a href="#">BCX55-TP</a>	<a href="#">BCX5510TA</a>	<a href="#">BCX5516TA</a>	<a href="#">BCX55E6327</a>	<a href="#">BCX56-10</a>
<a href="#">BCX56-10E6327</a>	<a href="#">BCX56-10H6327</a>	<a href="#">BCX56-10R1</a>	<a href="#">BCX56-16</a>	<a href="#">BCX56-16/BCX56</a>