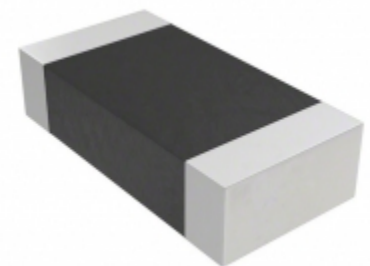


|                          |   |
|--------------------------|---|
| <b>AC0603KRX7R9BB473</b> |   |
| Part Number              | <a href="#">AC0603KRX7R9BB473</a>   |
| Manufacturer             | <a href="#">Yageo</a>   |
| Description              | CAP CER 0.047UF 50V X7R 0603  |
| Quantity Available       | 500 pcs in stock  |
| Datasheets               |   |
| AC0603KRX7R9BB473 Price  | <a href="#">Request Price &amp; Lead Time Online</a><br>or Email us: <a href="mailto:Info@ariat-tech.com">Info@ariat-tech.com</a> |


[GET A QUOTE](#)

| Technical Information of AC0603KRX7R9BB473 |                                   |                         |                                       |
|--|-----------------------------------|-------------------------|---------------------------------------|
| Manufacturer Part Number                   | <a href="#">AC0603KRX7R9BB473</a> | Category                | <a href="#">Capacitors</a>            |
| Manufacturer                               | <a href="#">Yageo</a>             | Description             | CAP CER 0.047UF 50V X7R 0603          |
| Package / Case                             | Tape & Reel (TR)                  | Quantity Available      | 500                                   |
| Series                                     | AC                                | Voltage - Rated         | 50V                                   |
| Operating Temperature                      | -55°C ~ 125°C                     | Ratings                 | AEC-Q200                              |
| Mounting Type                              | Surface Mount, MLCC               | Size / Dimension        | 0.063" L x 0.031" W (1.60mm x 0.80mm) |
| Height - Seated (Max)                      | -                                 | Features                | -                                     |
| Capacitance                                | 0.047µF                           | Tolerance               | ±10%                                  |
| Applications                               | Automotive                        | Lead Spacing            | -                                     |
| Package / Case                             | 0603 (1608 Metric)                | Temperature Coefficient | X7R                                   |
| Thickness (Max)                            | 0.035" (0.90mm)                   | Lead Style              | -                                     |
| Failure Rate                               | -                                 | Packaging               | Tape & Reel (TR)                      |

AC0603KRX7R9BB473 500pcs New and Original in Stock, Find AC0603KRX7R9BB473 Stock, Datasheet, PDF, Inventory at Ariat-Tech.com Online, Order AC0603KRX7R9BB473 Yageo with warrantied and confidence. RFQ AC0603KRX7R9BB473 : [Info@Ariat-Tech.com](mailto:Info@Ariat-Tech.com)

| Related parts for AC0603KRX7R9BB473 |                                   |                              |              |         |
|-------------------------------------|-----------------------------------|------------------------------|--------------|---------|
| Image                               | Part Number                       | Description                  | Manufacturer | Qty     |
|                                     | <a href="#">AC0603KRX7R9BB822</a> | CAP CER 8200PF 50V X7R 0603  | Yageo        | 500 pcs |
|                                     | <a href="#">AC0603KRX7R9BB223</a> | CAP CER 0.022UF 50V X7R 0603 | Yageo        | 500 pcs |
|                                     | <a href="#">AC0612JRNPO9BN151</a> | CAP CER 150PF 50V C0G 0612   | Yageo        | 500 pcs |
|                                     | <a href="#">AC0603KRX7R9BB683</a> | CAP CER 0.068UF 50V X7R 0603 | Yageo        | 500 pcs |
|                                     | <a href="#">AC0603KRX7R9BB682</a> | CAP CER 6800PF 50V X7R 0603  | Yageo        | 500 pcs |
|                                     | <a href="#">AC0612JRNPO9BN221</a> | CAP CER 220PF 50V NP0 0612   | Yageo        | 500 pcs |
|                                     | <a href="#">AC0612JRNPO9BN101</a> | CAP CER 100PF 50V NP0 0612   | Yageo        | 500 pcs |
|                                     | <a href="#">AC0603KRX7R9BB273</a> | CAP CER 0.027UF 50V X7R 0603 | Yageo        | 500 pcs |
|                                     | <a href="#">AC0603KRX7R9BB183</a> | CAP CER 0.018UF 50V X7R 0603 | Yageo        | 500 pcs |
|                                     | <a href="#">AC0603KRX7R9BB222</a> | CAP CER 2200PF 50V X7R 0603  | Yageo        | 500 pcs |
|                                     | <a href="#">AC0603KRX7R9BB472</a> | CAP CER 4700PF 50V X7R 0603  | Yageo        | 500 pcs |
|                                     | <a href="#">AC0603KRX7R9BB333</a> | CAP CER 0.033UF 50V X7R 0603 | Yageo        | 500 pcs |
|                                     | <a href="#">AC0603KRX7R9BB392</a> | CAP CER 3900PF 50V X7R 0603  | Yageo        | 500 pcs |
|                                     | <a href="#">AC0603KRX7R9BB182</a> | CAP CER 1800PF 50V X7R 0603  | Yageo        | 500 pcs |
|                                     | <a href="#">AC0612JRNPO9BN220</a> | CAP CER 22PF 50V NP0 0612    | Yageo        | 500 pcs |
|                                     | <a href="#">AC0612JRNPO9BN271</a> | CAP CER 270PF 50V C0G 0612   | Yageo        | 500 pcs |
|                                     | <a href="#">AC0612JRNPO9BN330</a> | CAP CER 33PF 50V C0G 0612    | Yageo        | 500 pcs |
|                                     | <a href="#">AC0603KRX7R9BB332</a> | CAP CER 3300PF 50V X7R 0603  | Yageo        | 500 pcs |
|                                     | <a href="#">AC0603KRX7R9BB562</a> | CAP CER 5600PF 50V X7R 0603  | Yageo        | 500 pcs |
|                                     | <a href="#">AC0603KRX7R9BB272</a> | CAP CER 2700PF 50V X7R 0603  | Yageo        | 500 pcs |

| IC Chips & IGBT Module - Hot Stock Part Number |                                   |                                   |                                   |                                   |
|--|-----------------------------------|-----------------------------------|-----------------------------------|-----------------------------------|
| <a href="#">AC0603KRX7R0BB222</a>              | <a href="#">AC0603KRX7R0BB472</a> | <a href="#">AC0603KRX7R0BB472</a> | <a href="#">AC0603KRX7R6BB224</a> | <a href="#">AC0603KRX7R7BB102</a> |
| <a href="#">AC0603KRX7R7BB103</a>              | <a href="#">AC0603KRX7R7BB104</a> | <a href="#">AC0603KRX7R7BB154</a> | <a href="#">AC0603KRX7R7BB222</a> | <a href="#">AC0603KRX7R7BB223</a> |
| <a href="#">AC0603KRX7R7BB224</a>              | <a href="#">AC0603KRX7R7BB473</a> | <a href="#">AC0603KRX7R8BB102</a> | <a href="#">AC0603KRX7R8BB103</a> | <a href="#">AC0603KRX7R8BB104</a> |
| <a href="#">AC0603KRX7R8BB222</a>              | <a href="#">AC0603KRX7R8BB223</a> | <a href="#">AC0603KRX7R8BB472</a> | <a href="#">AC0603KRX7R8BB473</a> | <a href="#">AC0603KRX7R9BB102</a> |
| <a href="#">AC0603KRX7R9BB103</a>              | <a href="#">AC0603KRX7R9BB104</a> | <a href="#">AC0603KRX7R9BB222</a> | <a href="#">AC0603KRX7R9BB223</a> | <a href="#">AC0603KRX7R9BB472</a> |
| <a href="#">AC0805JRNPO0BN100</a>              | <a href="#">AC0805JRNPO0BN101</a> | <a href="#">AC0805JRNPO0BN102</a> | <a href="#">AC0805JRNPO0BN220</a> | <a href="#">AC0805JRNPO0BN221</a> |
| <a href="#">AC0805JRNPO0BN470</a>              | <a href="#">AC0805JRNPO0BN471</a> | <a href="#">AC0805JRNPO9BN100</a> | <a href="#">AC0805JRNPO9BN101</a> | <a href="#">AC0805JRNPO9BN102</a> |
| <a href="#">AC0805JRNPO9BN220</a>              | <a href="#">AC0805JRNPO9BN221</a> | <a href="#">AC0805JRNPO9BN470</a> | <a href="#">AC0805JRNPO9BN471</a> | <a href="#">AC0805JRNPOYBN101</a> |
| <a href="#">AC0805JRNPOYBN102</a>              | <a href="#">AC0805JRNPOYBN102</a> | <a href="#">AC0805JRNPOYBN220</a> | <a href="#">AC0805JRNPOYBN221</a> | <a href="#">AC0805JRNPOYBN470</a> |
| <a href="#">AC0805JRNPOYBN471</a>              | <a href="#">AC0805KX7R0BB104</a>  | <a href="#">AC0805KX7R0BB473</a>  | <a href="#">AC0805KX7R5BB105</a>  | <a href="#">AC0805KX7R6BB105</a>  |