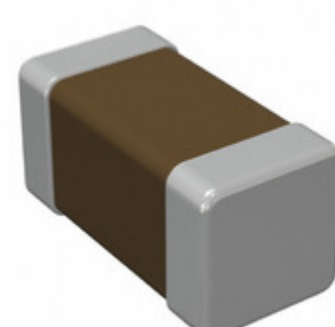


CIL10J2R7KNC	
Part Number	CIL10J2R7KNC
Manufacturer	Samsung Electro-Mechanics America, Inc.
Description	FIXED IND 2.7UH 15MA 1.35OHM SMD
Quantity Available	88990 pcs in stock
Datasheets	<a href="#">CIL10J2R7KNC.pdf</a>
CIL10J2R7KNC Price	<a href="#">Request Price &amp; Lead Time Online</a> or Email us: <a href="mailto:Info@ariat-tech.com">Info@ariat-tech.com</a>


[GET A QUOTE](#)

Technical Information of CIL10J2R7KNC			
Manufacturer Part Number	CIL10J2R7KNC	Category	Inductors, Coils, Chokes
Manufacturer	Samsung Electro-Mechanics America, Inc.	Description	FIXED IND 2.7UH 15MA 1.35OHM SMD
Package / Case		Quantity Available	88990
Manufacturer Standard Lead Time	26 Weeks	Detailed Description	2.7µH Shielded Inductor 15mA 1.35 Ohm Max 0603 (1608 Metric)
Series	CIL10	Operating Temperature	-40°C ~ 85°C
Ratings	-	Mounting Type	Surface Mount
Size / Dimension	0.063" L x 0.031" W (1.60mm x 0.80mm)	Height - Seated (Max)	0.037" (0.95mm)
Type	-	Features	-
Current Rating	15mA	Shielding	Shielded
Tolerance	±10%	Package / Case	0603 (1608 Metric)
Supplier Device Package	0603 (1608 Metric)	Inductance	2.7µH
Q @ Freq	35 @ 10MHz	Material - Core	Ferrite
Current - Saturation	-	DC Resistance (DCR)	1.35 Ohm Max
Frequency - Self Resonant	40MHz	Inductance Frequency - Test	10MHz
Lead Free Status / RoHS Status	Lead free / RoHS Compliant		

CIL10J2R7KNC 88990pcs New and Original in Stock, Find CIL10J2R7KNC Stock, Datasheet, PDF, Inventory at Ariat-Tech.com Online, Order CIL10J2R7KNC Samsung Electro-Mechanics America, Inc. with warrantied and confidence. RFQ CIL10J2R7KNC : [Info@Ariat-Tech.com](mailto:Info@Ariat-Tech.com)

Related parts for CIL10J2R7KNC				
Image	Part Number	Description	Manufacturer	Qty
	<a href="#">CIL10N47NKNC</a>	FIXED IND 47NH 50MA 300MOHM SMD	Samsung Electro-Mechanics America, Inc.	500 pcs
	<a href="#">CIL10NR12KNC</a>	FIXED IND 120NH 50MA 500MOHM SMD	Samsung Electro-Mechanics America, Inc.	500 pcs
	<a href="#">CIL10N68NKNC</a>	FIXED IND 68NH 50MA 300MOHM SMD	Samsung Electro-Mechanics America, Inc.	500 pcs
	<a href="#">CIL10J1R0KNC</a>	FIXED IND 1UH 25MA 600MOHM SMD	Samsung Electro-Mechanics America, Inc.	500 pcs
	<a href="#">CIL10J1R8KNC</a>	FIXED IND 1.8UH 25MA 950MOHM SMD	Samsung Electro-Mechanics America, Inc.	500 pcs
	<a href="#">CIL10J3R3KNC</a>	FIXED IND 3.3UH 15MA 1.55OHM SMD	Samsung Electro-Mechanics America, Inc.	500 pcs
	<a href="#">CIL10J3R9KNC</a>	FIXED IND 3.9UH 15MA 1.7OHM SMD	Samsung Electro-Mechanics America, Inc.	500 pcs
	<a href="#">CIL05J2R2KNC</a>	FIXED IND 2.2UH SMD	Samsung Electro-Mechanics America, Inc.	500 pcs
	<a href="#">CIL10J3R3KNC/1608-3R3</a>	CIL10J3R3KNC/1608-3R3 Original	Original	4000 pcs
	<a href="#">CIL10NR15KNC</a>	FIXED IND 150NH 50MA 600MOHM SMD	Samsung Electro-Mechanics America, Inc.	500 pcs
	<a href="#">CIL026698</a>	LAMP MAGNIFIER 1.88X LED 10W	Luxo	500 pcs
	<a href="#">CIL10J4R7KNC</a>	FIXED IND 4.7UH 15MA 2.1OHM SMD	Samsung Electro-Mechanics America, Inc.	54230 pcs
	<a href="#">CIL10N56NKNC</a>	FIXED IND 56NH 50MA 300MOHM SMD	Samsung Electro-Mechanics America, Inc.	500 pcs
	<a href="#">CIL10J1R5KNC</a>	FIXED IND 1.5UH 25MA 800MOHM SMD	Samsung Electro-Mechanics America, Inc.	500 pcs
	<a href="#">CIL10N82NKNC</a>	FIXED IND 82NH 50MA 300MOHM SMD	Samsung Electro-Mechanics America, Inc.	500 pcs
	<a href="#">CIL10J2R2KNC</a>	FIXED IND 2.2UH 15MA 1.15OHM SMD	Samsung Electro-Mechanics America, Inc.	36000 pcs
	<a href="#">CIL10J1R2KNC</a>	FIXED IND 1.2UH 25MA 800MOHM SMD	Samsung Electro-Mechanics America, Inc.	500 pcs
	<a href="#">CIL026699</a>	LAMP MAGNIFIER 2.25X LED 10W	Luxo	500 pcs
	<a href="#">CIL10NR18KNC</a>	FIXED IND 180NH 50MA 600MOHM SMD	Samsung Electro-Mechanics America, Inc.	500 pcs
	<a href="#">CIL10NR10KNC</a>	FIXED IND 100NH 50MA 500MOHM SMD	Samsung Electro-Mechanics America, Inc.	500 pcs

**IC Chips & IGBT Module - Hot Stock Part Number**

<a href="#">06031U9R1CAT2A</a>	<a href="#">AA60A-036L-050D033H</a>	<a href="#">AD7788ARMZ</a>	<a href="#">AT49BV6416C-70CI-J</a>	<a href="#">AUIPS2041LTR</a>
<a href="#">BD5451EFV-E2</a>	<a href="#">BD63444FU-E2</a>	<a href="#">BFG92A-GS08</a>	<a href="#">BSC030N08NS5</a>	<a href="#">CC0805JRNPO9BN471</a>
<a href="#">CIL10J2R2KNC</a>	<a href="#">CIL10J3R3KNC/1608-3R3</a>	<a href="#">CIL10J4R7KNC</a>	<a href="#">CIL10NR27KNC</a>	<a href="#">CIL10NR47KNC</a>
<a href="#">CIL10NR56KNC</a>	<a href="#">CIL10NR56KNC/1608-R56</a>	<a href="#">CIL21J1R0KNE</a>	<a href="#">CIL21J1R2KNE</a>	<a href="#">CIL21J1R5KNE</a>
<a href="#">CIL21J1R8KNE</a>	<a href="#">CIL21J2R2KNE</a>	<a href="#">CIL21J2R2MAE</a>	<a href="#">CIL21J2R7KNE</a>	<a href="#">CIL21J3R3KNE</a>
<a href="#">CIL21J3R9KNE</a>	<a href="#">CIL21J4R7KNE</a>	<a href="#">CIL21N47NKNE</a>	<a href="#">CIL21N47NMNE</a>	<a href="#">CIL21N68NMNE</a>
<a href="#">CIL21N68NMNE</a>	<a href="#">CIL21NR10KNE</a>	<a href="#">CIL21NR47KNE</a>	<a href="#">CIL21NR56KNE/2012-R56</a>	<a href="#">CIL21Y100KNE</a>
<a href="#">CIL21Y6R8KNE</a>	<a href="#">FS20R06VE3</a>	<a href="#">FSBS10CH60A</a>	<a href="#">HVC316TRU-EQ</a>	<a href="#">IR3895MTR1PBF.</a>
<a href="#">K4T51163QJ-BCE7</a>	<a href="#">LM285BXM-2.5</a>	<a href="#">MM8030-2600RK</a>	<a href="#">PM800DV1B060</a>	<a href="#">SA57814DD</a>
<a href="#">SFH618A-2</a>	<a href="#">SI7913DN-T1-E3</a>	<a href="#">SKM400GA102D</a>	<a href="#">TPC8007-H</a>	<a href="#">VI-210-EW</a>