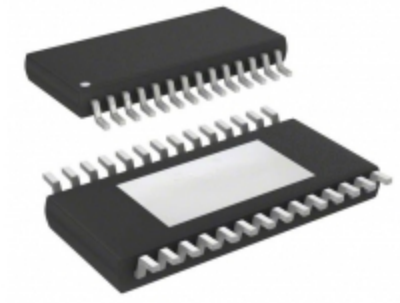


A3981KLPTR-T	
Part Number	<a href="#">A3981KLPTR-T</a>
Manufacturer	<a href="#">Allegro MicroSystems, LLC.</a>
Description	IC MOTOR DRIVER SPI 28TSSOP
Quantity Available	31175 pcs in stock
Datasheets	<a href="#">A3981KLPTR-T.pdf</a>
A3981KLPTR-T Price	<a href="#">Request Price &amp; Lead Time Online</a> or Email us: <a href="mailto:Info@ariat-tech.com">Info@ariat-tech.com</a>


[GET A QUOTE](#)

Technical Information of A3981KLPTR-T			
Manufacturer Part Number	<a href="#">A3981KLPTR-T</a>	Category	<a href="#">Integrated Circuits (ICs)</a>
Manufacturer	<a href="#">Allegro MicroSystems, LLC.</a>	Description	IC MOTOR DRIVER SPI 28TSSOP
Package / Case	Tape & Reel (TR)	Quantity Available	31175
Series	-	Technology	DMOS
Operating Temperature	-40°C ~ 150°C (TJ)	Mounting Type	Surface Mount
Interface	SPI, Step/Direction	Applications	Automotive
Package / Case	28-TSSOP (0.173", 4.40mm Width) Exposed Pad	Supplier Device Package	28-TSSOP-EP
Voltage - Supply	3 V ~ 5.5 V	Function	Driver - Fully Integrated, Control and Power Stage
Current - Output	1.4A	Output Configuration	Half Bridge (4)
Voltage - Load	7 V ~ 28 V	Motor Type - Stepper	Bipolar
Motor Type - AC, DC	-	Step Resolution	1, 1/2, 1/4, 1/16
Packaging	Tape & Reel (TR)		

A3981KLPTR-T 31175pcs New and Original in Stock, Find A3981KLPTR-T Stock, Datasheet, PDF, Inventory at Ariat-Tech.com Online, Order A3981KLPTR-T Allegro MicroSystems, LLC. with warrantied and confidence. RFQ A3981KLPTR-T : [Info@Ariat-Tech.com](mailto:Info@Ariat-Tech.com)

Related parts for A3981KLPTR-T				
Image	Part Number	Description	Manufacturer	Qty
	<a href="#">A3980KLPTR-T</a>	IC MOTOR DRIVER PAR 28TSSOP	Allegro MicroSystems, LLC.	1100 pcs
	<a href="#">A3983SLP-T</a>	IC MOTOR DRIVER PAR 24TSSOP	Allegro MicroSystems, LLC.	500 pcs
	<a href="#">A3980KLPTR</a>	IC MOTOR DRIVER PAR 28TSSOP	Allegro MicroSystems, LLC.	3985 pcs
	<a href="#">A3980KLP</a>	IC MOTOR DRIVER PAR 28TSSOP	Allegro MicroSystems, LLC.	505 pcs
	<a href="#">A3982SLBTR</a>	IC MOTOR DRIVER PAR 24SOIC	Allegro MicroSystems, LLC.	500 pcs
	<a href="#">A3983SLP</a>	IC MOTOR DRIVER PAR 24TSSOP	Allegro MicroSystems, LLC.	505 pcs
	<a href="#">A397PD</a>	DIODE GEN PURP 1.4KV 400A DO200	Powerex, Inc.	500 pcs
	<a href="#">A3982SLB</a>	IC MOTOR DRIVER PAR 24SOIC	Allegro MicroSystems, LLC.	1002 pcs
	<a href="#">A397P</a>	DIODE GEN PURP 1KV 400A DO200	Powerex, Inc.	500 pcs
	<a href="#">A3982SLB-T</a>	IC MOTOR DRIVER PAR 24SOIC	Allegro MicroSystems, LLC.	500 pcs
	<a href="#">A3983SLPT</a>	A3983SLPT ALLEGRO	ALLEGRO	39557 pcs
	<a href="#">A3982SLBTR-T</a>	IC MOTOR DRIVER PAR 24SOIC	Allegro MicroSystems, LLC.	2000 pcs
	<a href="#">A3983SLPTR-T</a>	IC MOTOR DRIVER PAR 24TSSOP	Allegro MicroSystems, LLC.	3637 pcs
	<a href="#">A397PE</a>	DIODE GEN PURP 1.5KV 400A DO200	Powerex, Inc.	500 pcs
	<a href="#">A3981KLPT</a>	A3981KLPT ALLEGRO	ALLEGRO	4000 pcs
	<a href="#">A397PB</a>	DIODE GEN PURP 1.2KV 400A DO200	Powerex, Inc.	500 pcs
	<a href="#">A3982SLBT</a>	A3982SLBT ALLEGRO	ALLEGRO	2844 pcs
	<a href="#">A3983SLPTR</a>	IC MOTOR DRIVER PAR 24TSSOP	Allegro MicroSystems, LLC.	500 pcs
	<a href="#">A3980KLPT</a>	A3980KLPT ALLEGRO	ALLEGRO	150 pcs
	<a href="#">A3980KLP-T</a>	IC MOTOR DRIVER PAR 28TSSOP	Allegro MicroSystems, LLC.	500 pcs

**IC Chips & IGBT Module - Hot Stock Part Number**

<a href="#">A3968SLB</a>	<a href="#">A3968SLBTR</a>	<a href="#">A3968SLBTR-T</a>	<a href="#">A3969SET-T</a>	<a href="#">A3969SETTR-T</a>
<a href="#">A3972SB-T</a>	<a href="#">A3972SBT</a>	<a href="#">A3973SB-T</a>	<a href="#">A3973SLBTR</a>	<a href="#">A3974SED</a>
<a href="#">A3977KLP</a>	<a href="#">A3977KLPT</a>	<a href="#">A3977KLPTR-T</a>	<a href="#">A3977SEDT</a>	<a href="#">A3977SEDTR-T</a>
<a href="#">A3977SLP</a>	<a href="#">A3977SLPT</a>	<a href="#">A3977SLPTR</a>	<a href="#">A3977SLPTR-T</a>	<a href="#">A3979SLPT</a>
<a href="#">A3979SLPTR-T</a>	<a href="#">A3980KLP</a>	<a href="#">A3980KLPTR</a>	<a href="#">A3980KLPTR-T</a>	<a href="#">A3981KLPT</a>
<a href="#">A3982SLB</a>	<a href="#">A3982SLBT</a>	<a href="#">A3982SLBTR-T</a>	<a href="#">A3983SLP</a>	<a href="#">A3983SLPT</a>
<a href="#">A3983SLPTR-T</a>	<a href="#">A3984SLP</a>	<a href="#">A3984SLPTR</a>	<a href="#">A3984SLPT-T</a>	<a href="#">A3984SLPTR-T</a>
<a href="#">A3985SLDT</a>	<a href="#">A3985SLDTR-T</a>	<a href="#">A3986SLDTR-T</a>	<a href="#">A3987SLPTR-T</a>	<a href="#">A3988EVT</a>
<a href="#">A3988SEVTR-T</a>	<a href="#">A3988SJP-T</a>	<a href="#">A3988SJPTR-T</a>	<a href="#">A3989SEVTR-T</a>	<a href="#">A3992SB-T</a>
<a href="#">A3992SBT</a>	<a href="#">A3992SLPT</a>	<a href="#">A3992SLPTR-T</a>	<a href="#">A3995SEVTR</a>	<a href="#">A3995SEVTR-T</a>