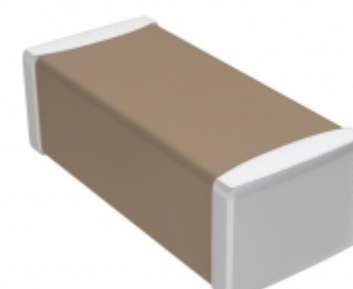


<b>C1608CH2A103K080AC</b>	
Part Number	<a href="#">C1608CH2A103K080AC</a>
Manufacturer	<a href="#">TDK Corporation</a>
Description	CAP CER 10000PF 100V CH 0603
Quantity Available	500 pcs in stock
Datasheets	
C1608CH2A103K080AC Price	<a href="#">Request Price &amp; Lead Time Online</a> or Email us: <a href="mailto:Info@ariat-tech.com">Info@ariat-tech.com</a>


[GET A QUOTE](#)

Technical Information of C1608CH2A103K080AC			
Manufacturer Part Number	<a href="#">C1608CH2A103K080AC</a>	Category	<a href="#">Capacitors</a>
Manufacturer	<a href="#">TDK Corporation</a>	Description	CAP CER 10000PF 100V CH 0603
Package / Case	Tape & Reel (TR)	Quantity Available	500
Series	C	Voltage - Rated	100V
Operating Temperature	-25°C ~ 85°C	Ratings	-
Mounting Type	Surface Mount, MLCC	Size / Dimension	0.063" L x 0.031" W (1.60mm x 0.80mm)
Height - Seated (Max)	-	Features	Low ESL
Capacitance	10000pF	Tolerance	±10%
Applications	General Purpose	Lead Spacing	-
Package / Case	0603 (1608 Metric)	Temperature Coefficient	CH
Thickness (Max)	0.035" (0.90mm)	Lead Style	-
Failure Rate	-	Packaging	Tape & Reel (TR)

C1608CH2A103K080AC 500pcs New and Original in Stock, Find C1608CH2A103K080AC Stock, Datasheet, PDF, Inventory at Ariat-Tech.com Online, Order C1608CH2A103K080AC TDK Corporation with warrantied and confidence. RFQ C1608CH2A103K080AC : [Info@Ariat-Tech.com](mailto:Info@Ariat-Tech.com)

Related parts for C1608CH2A103K080AC				
Image	Part Number	Description	Manufacturer	Qty
	<a href="#">C1608CH2A101J080AA</a>	CAP CER 100PF 100V CH 0603	TDK Corporation	500 pcs
	<a href="#">C1608CH2A060D080AA</a>	CAP CER 6PF 100V CH 0603	TDK Corporation	500 pcs
	<a href="#">C1608CH2A122K080AA</a>	CAP CER 1200PF 100V CH 0603	TDK Corporation	500 pcs
	<a href="#">C1608CH2A080D080AA</a>	CAP CER 8PF 100V CH 0603	TDK Corporation	500 pcs
	<a href="#">C1608CH2A151K080AA</a>	CAP CER 150PF 100V CH 0603	TDK Corporation	500 pcs
	<a href="#">C1608CH2A102J080AA</a>	CAP CER 1000PF 100V CH 0603	TDK Corporation	500 pcs
	<a href="#">C1608CH2A152K080AA</a>	CAP CER 1500PF 100V CH 0603	TDK Corporation	500 pcs
	<a href="#">C1608CH2A121K080AA</a>	CAP CER 120PF 100V CH 0603	TDK Corporation	500 pcs
	<a href="#">C1608CH2A102K080AA</a>	CAP CER 1000PF 100V CH 0603	TDK Corporation	500 pcs
	<a href="#">C1608CH2A100D080AA</a>	CAP CER 10PF 100V CH 0603	TDK Corporation	500 pcs
	<a href="#">C1608CH2A151J080AA</a>	CAP CER 150PF 100V CH 0603	TDK Corporation	500 pcs
	<a href="#">C1608CH2A090D080AA</a>	CAP CER 9PF 100V CH 0603	TDK Corporation	500 pcs
	<a href="#">C1608CH2A122J080AA</a>	CAP CER 1200PF 100V CH 0603	TDK Corporation	500 pcs
	<a href="#">C1608CH2A101K080AA</a>	CAP CER 100PF 100V CH 0603	TDK Corporation	500 pcs
	<a href="#">C1608CH2A152J080AA</a>	CAP CER 1500PF 100V CH 0603	TDK Corporation	500 pcs
	<a href="#">C1608CH2A121J080AA</a>	CAP CER 120PF 100V CH 0603	TDK Corporation	500 pcs
	<a href="#">C1608CH2A070D080AA</a>	CAP CER 7PF 100V CH 0603	TDK Corporation	500 pcs
	<a href="#">C1608CH2A103J080AC</a>	CAP CER 10000PF 100V CH 0603	TDK Corporation	500 pcs
	<a href="#">C1608CH2A120J080AA</a>	CAP CER 12PF 100V CH 0603	TDK Corporation	500 pcs
	<a href="#">C1608CH2A150J080AA</a>	CAP CER 15PF 100V CH 0603	TDK Corporation	500 pcs

**IC Chips & IGBT Module - Hot Stock Part Number**

<a href="#">C1608CH1H821J080AA</a>	<a href="#">C1608CH1H821K080AA</a>	<a href="#">C1608CH1H822J080AA</a>	<a href="#">C1608CH1H822K080AA</a>	<a href="#">C1608CH1H822K080AA</a>
<a href="#">C1608CH1HR75C080AA</a>	<a href="#">C1608CH1V103J080AC</a>	<a href="#">C1608CH1V153J080AC</a>	<a href="#">C1608CH1V153J080AC</a>	<a href="#">C1608CH1V183J080AC</a>
<a href="#">C1608CH2A010C080AA</a>	<a href="#">C1608CH2A020C080AA</a>	<a href="#">C1608CH2A030C080AA</a>	<a href="#">C1608CH2A040C080AA</a>	<a href="#">C1608CH2A050C080AA</a>
<a href="#">C1608CH2A060D080AA</a>	<a href="#">C1608CH2A070D080AA</a>	<a href="#">C1608CH2A080D080AA</a>	<a href="#">C1608CH2A090D080AA</a>	<a href="#">C1608CH2A100D080AA</a>
<a href="#">C1608CH2A101J080AA</a>	<a href="#">C1608CH2A101K080AA</a>	<a href="#">C1608CH2A102J080AA</a>	<a href="#">C1608CH2A102K080AA</a>	<a href="#">C1608CH2A103J080AC</a>
<a href="#">C1608CH2A120J080AA</a>	<a href="#">C1608CH2A121J080AA</a>	<a href="#">C1608CH2A121K080AA</a>	<a href="#">C1608CH2A122J080AA</a>	<a href="#">C1608CH2A122K080AA</a>
<a href="#">C1608CH2A150J080AA</a>	<a href="#">C1608CH2A151J080AA</a>	<a href="#">C1608CH2A151K080AA</a>	<a href="#">C1608CH2A152J080AA</a>	<a href="#">C1608CH2A152K080AA</a>
<a href="#">C1608CH2A180J080AA</a>	<a href="#">C1608CH2A181J080AA</a>	<a href="#">C1608CH2A181K080AA</a>	<a href="#">C1608CH2A182J080AA</a>	<a href="#">C1608CH2A182K080AA</a>
<a href="#">C1608CH2A1R5C080AA</a>	<a href="#">C1608CH2A220J080AA</a>	<a href="#">C1608CH2A221J080AA</a>	<a href="#">C1608CH2A221K080AA</a>	<a href="#">C1608CH2A222J080AA</a>
<a href="#">C1608CH2A222K080AA</a>	<a href="#">C1608CH2A270J080AA</a>	<a href="#">C1608CH2A270K080AA</a>	<a href="#">C1608CH2A271J080AA</a>	<a href="#">C1608CH2A271K080AA</a>