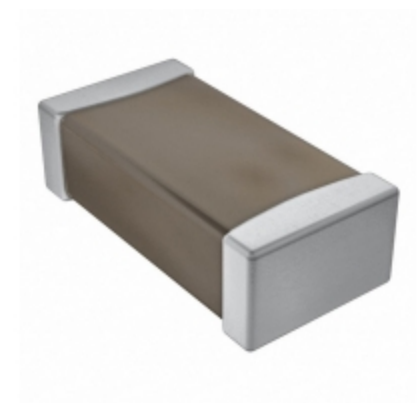


|                       |   |
|-----------------------|---|
| <b>12061C222JAZ2A</b> |   |
| Part Number           | <a href="#">12061C222JAZ2A</a>  |
| Manufacturer          | <a href="#">AVX Corporation</a>   |
| Description           | CAP CER 2200PF 100V X7R 1206  |
| Quantity Available    | 500 pcs in stock  |
| Datasheets            |   |
| 12061C222JAZ2A Price  | <a href="#">Request Price &amp; Lead Time Online</a><br>or Email us: <a href="mailto:Info@ariat-tech.com">Info@ariat-tech.com</a> |



[GET A QUOTE](#)

| Technical Information of 12061C222JAZ2A |                                 |                         |                                       |
|---|---------------------------------|-------------------------|---------------------------------------|
| Manufacturer Part Number                | <a href="#">12061C222JAZ2A</a>  | Category                | <a href="#">Capacitors</a>            |
| Manufacturer                            | <a href="#">AVX Corporation</a> | Description             | CAP CER 2200PF 100V X7R 1206          |
| Package / Case                          | Tape & Reel (TR)                | Quantity Available      | 500                                   |
| Series                                  | FLEXITERM®                      | Voltage - Rated         | 100V                                  |
| Operating Temperature                   | -55°C ~ 125°C                   | Ratings                 | -                                     |
| Mounting Type                           | Surface Mount, MLCC             | Size / Dimension        | 0.126" L x 0.063" W (3.20mm x 1.60mm) |
| Height - Seated (Max)                   | -                               | Features                | Soft Termination                      |
| Capacitance                             | 2200pF                          | Tolerance               | ±5%                                   |
| Applications                            | Boardflex Sensitive             | Lead Spacing            | -                                     |
| Package / Case                          | 1206 (3216 Metric)              | Temperature Coefficient | X7R                                   |
| Thickness (Max)                         | 0.037" (0.94mm)                 | Lead Style              | -                                     |
| Packaging                               | Tape & Reel (TR)                |                         |                                       |

12061C222JAZ2A 500pcs New and Original in Stock, Find 12061C222JAZ2A Stock, Datasheet, PDF, Inventory at Ariat-Tech.com Online, Order 12061C222JAZ2A AVX Corporation with warrantied and confidence. RFQ 12061C222JAZ2A : [Info@Ariat-Tech.com](mailto:Info@Ariat-Tech.com)

| Related parts for 12061C222JAZ2A |                                |                               |                                       |          |
|----------------------------------|--------------------------------|-------------------------------|---------------------------------------|----------|
| Image                            | Part Number                    | Description                   | Manufacturer                          | Qty      |
|                                  | <a href="#">12061C222MAT2A</a> | CAP CER 2200PF 100V X7R 1206  | AVX Corporation                       | 500 pcs  |
|                                  | <a href="#">12061C222K4T4A</a> | CAP CER 2200PF 100V X7R 1206  | AVX Corporation                       | 500 pcs  |
|                                  | <a href="#">12061C221JAT2A</a> | CAP CER 220PF 100V X7R 1206   | Avago Technologies (Broadcom Limited) | 500 pcs  |
|                                  | <a href="#">12061C223JAT2A</a> | CAP CER 0.022UF 100V X7R 1206 | AVX Corporation                       | 1000 pcs |
|                                  | <a href="#">12061C201KAT2A</a> | CAP CER 200PF 100V X7R 1206   | AVX Corporation                       | 500 pcs  |
|                                  | <a href="#">12061C221JAT2A</a> | CAP CER 220PF 100V X7R 1206   | AVX Corporation                       | 500 pcs  |
|                                  | <a href="#">12061C222KAZ2A</a> | CAP CER 2200PF 100V X7R 1206  | AVX Corporation                       | 500 pcs  |
|                                  | <a href="#">12061C221KAT4A</a> | CAP CER 220PF 100V X7R 1206   | AVX Corporation                       | 500 pcs  |
|                                  | <a href="#">12061C223KAT2A</a> | CAP CER 0.022UF 100V X7R 1206 | AVX Corporation                       | 1450 pcs |
|                                  | <a href="#">12061C222M4T4A</a> | CAP CER 2200PF 100V X7R 1206  | AVX Corporation                       | 500 pcs  |
|                                  | <a href="#">12061C222JAT2A</a> | CAP CER 2200PF 100V X7R 1206  | AVX Corporation                       | 500 pcs  |
|                                  | <a href="#">12061C202KAT2A</a> | CAP CER 2000PF 100V X7R 1206  | AVX Corporation                       | 500 pcs  |
|                                  | <a href="#">12061C223JAZ2A</a> | CAP CER 0.022UF 100V X7R 1206 | AVX Corporation                       | 500 pcs  |
|                                  | <a href="#">12061C202JAT2A</a> | CAP CER 2000PF 100V X7R 1206  | AVX Corporation                       | 500 pcs  |
|                                  | <a href="#">12061C183MAT2A</a> | CAP CER 0.018UF 100V X7R 1206 | AVX Corporation                       | 500 pcs  |
|                                  | <a href="#">12061C201KAT4A</a> | CAP CER 200PF 100V X7R 1206   | AVX Corporation                       | 500 pcs  |
|                                  | <a href="#">12061C222KAT2A</a> | CAP CER 2200PF 100V X7R 1206  | AVX Corporation                       | 500 pcs  |
|                                  | <a href="#">12061C222M4T2A</a> | CAP CER 2200PF 100V X7R 1206  | AVX Corporation                       | 500 pcs  |
|                                  | <a href="#">12061C221KAT2A</a> | CAP CER 220PF 100V X7R 1206   | AVX Corporation                       | 500 pcs  |
|                                  | <a href="#">12061C222KAT4A</a> | CAP CER 2200PF 100V X7R 1206  | AVX Corporation                       | 500 pcs  |

IC Chips & IGBT Module - Hot Stock Part Number

|                                |                                |                                |                                |                                |
|--------------------------------|--------------------------------|--------------------------------|--------------------------------|--------------------------------|
| <a href="#">12061C153KAT4A</a> | <a href="#">12061C153KAT4A</a> | <a href="#">12061C153KAZ2A</a> | <a href="#">12061C153MAT2A</a> | <a href="#">12061C154JAT2A</a> |
| <a href="#">12061C154KAT2A</a> | <a href="#">12061C154MAZ2A</a> | <a href="#">12061C182JAT2A</a> | <a href="#">12061C182JAT4A</a> | <a href="#">12061C182KAT2A</a> |
| <a href="#">12061C182KAT2P</a> | <a href="#">12061C183JAT2A</a> | <a href="#">12061C183JAZ2A</a> | <a href="#">12061C183KAT2A</a> | <a href="#">12061C183KAT4A</a> |
| <a href="#">12061C183MAT2A</a> | <a href="#">12061C201KAT2A</a> | <a href="#">12061C201KAT4A</a> | <a href="#">12061C202JAT2A</a> | <a href="#">12061C202KAT2A</a> |
| <a href="#">12061C221JAT2A</a> | <a href="#">12061C221JAT2A</a> | <a href="#">12061C221KAT2A</a> | <a href="#">12061C221KAT4A</a> | <a href="#">12061C222JAT2A</a> |
| <a href="#">12061C222K4T4A</a> | <a href="#">12061C222KAT2A</a> | <a href="#">12061C222KAT4A</a> | <a href="#">12061C222KAZ2A</a> | <a href="#">12061C222M4T2A</a> |
| <a href="#">12061C222M4T4A</a> | <a href="#">12061C222MAT2A</a> | <a href="#">12061C223JAT2A</a> | <a href="#">12061C223JAZ2A</a> | <a href="#">12061C223KAT2A</a> |
| <a href="#">12061C223KAT4A</a> | <a href="#">12061C223KAZ2A</a> | <a href="#">12061C223MAT2A</a> | <a href="#">12061C224JAT2A</a> | <a href="#">12061C224K4T2A</a> |
| <a href="#">12061C224K4Z2A</a> | <a href="#">12061C224KAT2A</a> | <a href="#">12061C224KAZ2A</a> | <a href="#">12061C224MAT2A</a> | <a href="#">12061C225KAT2A</a> |
| <a href="#">12061C225MAT2A</a> | <a href="#">12061C242JAT2A</a> | <a href="#">12061C242JAT4A</a> | <a href="#">12061C242KAT2A</a> | <a href="#">12061C243JAT2A</a> |