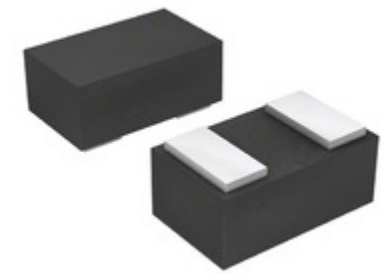


| | |
|-----------------------------|--|
| BAR6402LRHE6327XTSA1 | |
| Part Number | BAR6402LRHE6327XTSA1 |
| Manufacturer | International Rectifier (Infineon Technologies) |
| Description | DIODE RF SGL 150V 100MA TSLP2-7 |
| Quantity Available | 500 pcs in stock |
| Datasheets | |
| BAR6402LRHE6327XTSA1 Price | Request Price & Lead Time Online or Email us: Info@ariat-tech.com |


[GET A QUOTE](#)

| Technical Information of BAR6402LRHE6327XTSA1 | | | |
|---|---|-------------------------|--|
| Manufacturer Part Number | BAR6402LRHE6327XTSA1 | Category | Discrete Semiconductor |
| Manufacturer | International Rectifier (Infineon Technologies) | Description | DIODE RF SGL 150V 100MA TSLP2-7 |
| Package / Case | Tape & Reel (TR) | Quantity Available | 500 |
| Voltage - Peak Reverse (Max) | 150V | Supplier Device Package | PG-TSLP-2 |
| Series | - | Resistance @ If, F | 1.35 Ohm @ 100mA, 100MHz |
| Power Dissipation (Max) | 250mW | Packaging | Tape & Reel (TR) |
| Package / Case | SOD-882 | Operating Temperature | 150°C (TJ) |
| Diode Type | PIN - Single | Current - Max | 100mA |
| Capacitance @ Vr, F | 0.35pF @ 20V, 1MHz | | |

BAR6402LRHE6327XTSA1 500pcs New and Original in Stock, Find BAR6402LRHE6327XTSA1 Stock, Datasheet, PDF, Inventory at Ariat-Tech.com Online, Order BAR6402LRHE6327XTSA1 International Rectifier (Infineon Technologies) with warrantied and confidence. RFQ BAR6402LRHE6327XTSA1 : Info@Ariat-Tech.com

| Related parts for BAR6402LRHE6327XTSA1 | | | | |
|--|-------------------------------------|----------------------------------|---|------------|
| Image | Part Number | Description | Manufacturer | Quantity |
| | BAR6404E6327HTSA1 | DIODE RF SER 150V 100MA SOT-23 | International Rectifier (Infineon Technologies) | 500 pcs |
| | BAR6402VH6327XTSA1 | DIODE RF PIN 150V 100MA SC79 | International Rectifier (Infineon Technologies) | 500 pcs |
| | BAR6402ELE6327XTMA1 | DIODE RF SGL 150V 100MA TSLP2-19 | Infineon Technologies | 500 pcs |
| | BAR6405WH6327XTSA1 | DIODE RF PIN 150V 100MA SOT323 | Infineon Technologies | 500 pcs |
| | BAR64-07 | BAR64-07 infineon | infineon | 178500 pcs |
| | BAR6404WE6327BTS1 | DIODE RF SER 150V 100MA SOT-323 | Infineon Technologies | 500 pcs |
| | BAR64-07E6327 | BAR64-07E6327 INFINEON | INFINEON | 12000 pcs |
| | BAR64-05WH6327 | BAR64-05WH6327 Son | Son | 200 pcs |
| | BAR64-06W H6327 | BAR64-06W H6327 INFINEON | INFINEON | 45000 pcs |
| | BAR640-25WE6327 | BAR640-25WE6327 INFINEON | INFINEON | 1050 pcs |
| | BAR6405E6433HTMA1 | DIODE RF CC 150V 100MA SOT-23 | Infineon Technologies | 500 pcs |
| | BAR6405WE6433HTMA1 | DIODE RF CC 150V 100MA SOT-323 | Infineon Technologies | 500 pcs |
| | BAR64-06E6327 | BAR64-06E6327 Son | Son | 2000 pcs |
| | BAR6404WH6327XTSA1 | DIODE RF PIN 150V 100MA SOT323 | Infineon Technologies | 500 pcs |
| | BAR64-07 E6327 | BAR64-07 E6327 INFINEON | INFINEON | 30000 pcs |
| | BAR64-06W | BAR64-06W INFINEON | INFINEON | 2000 pcs |
| | BAR6403WE6327HTSA1 | DIODE RF SGL 150V 100MA SOD-323 | Infineon Technologies | 500 pcs |
| | BAR6405E6327HTSA1 | DIODE RF CC 150V 100MA SOT-23 | International Rectifier (Infineon Technologies) | 500 pcs |
| | BAR6405WE6327BTS1 | DIODE RF CC 150V 100MA SOT-323 | Infineon Technologies | 500 pcs |
| | BAR64-06 | BAR64-06 Infineon | Infineon | 41 pcs |

| | | | |
|--|---|--|---|
| BAR6402LRHE6327XTSA1 Stock | BAR6402LRHE6327XTSA1 Price | BAR6402LRHE6327XTSA1 Electronics | BAR6402LRHE6327XTSA1 Components |
| BAR6402LRHE6327XTSA1 Inventory | BAR6402LRHE6327XTSA1 Digikey | Supplier BAR6402LRHE6327XTSA1 | Order BAR6402LRHE6327XTSA1 Online |
| Inquiry BAR6402LRHE6327XTSA1 | BAR6402LRHE6327XTSA1 Image | BAR6402LRHE6327XTSA1 Picture | BAR6402LRHE6327XTSA1 PDF |
| BAR6402LRHE6327XTSA1 Datasheet | Download BAR6402LRHE6327XTSA1 Datasheet | Manufacturer International Rectifier (Infineon Technologies) | |